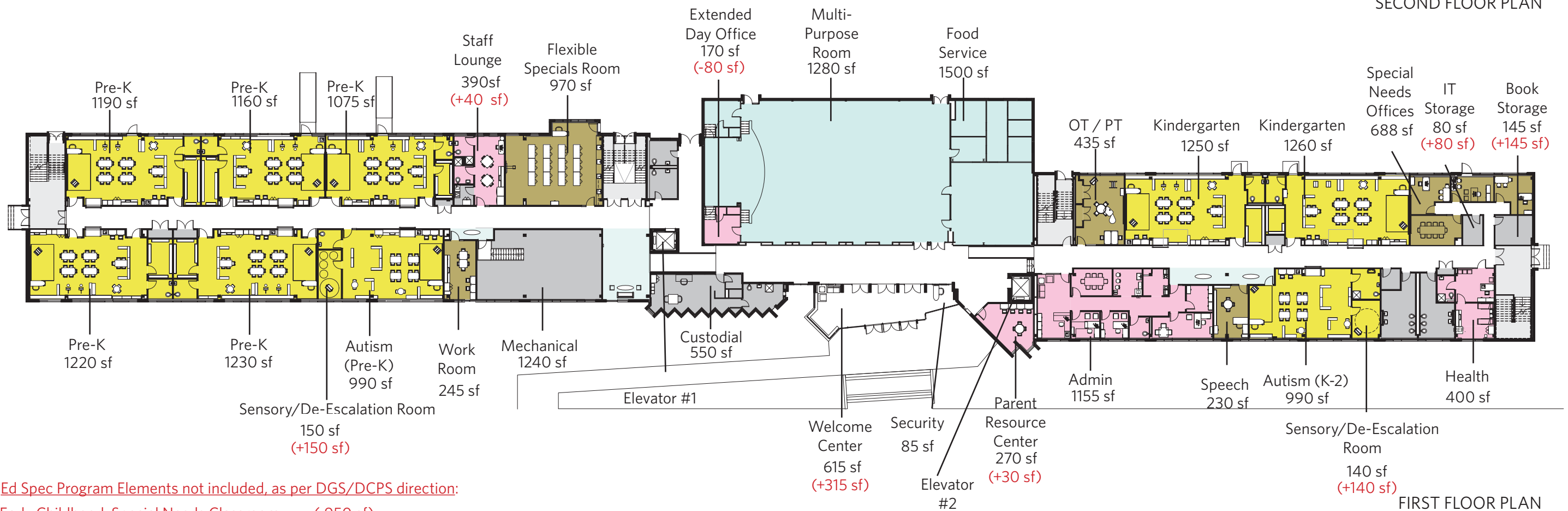
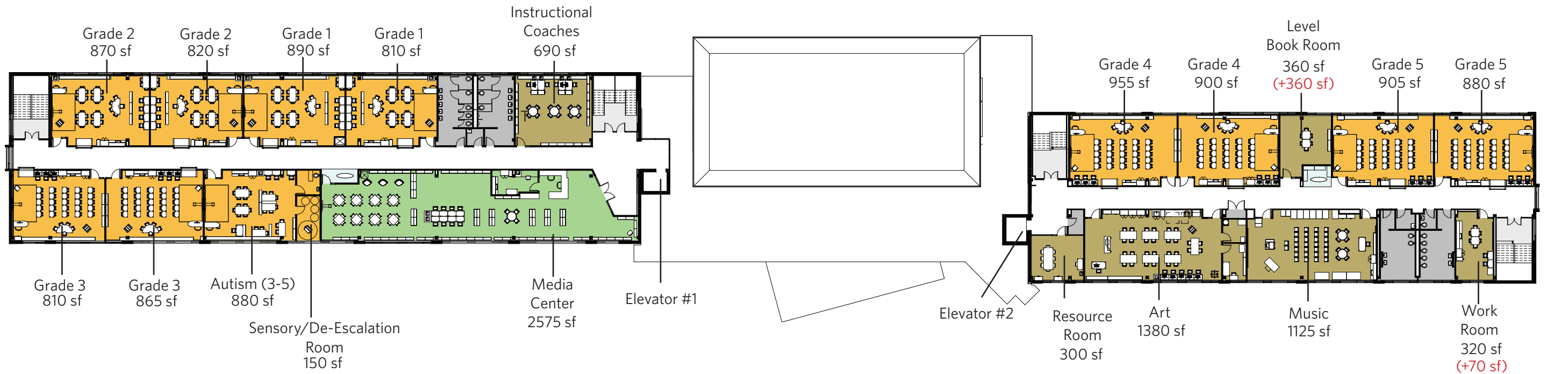


**Garrison Elementary School
Modernization**

Draft Schematic Design
December 10 2015

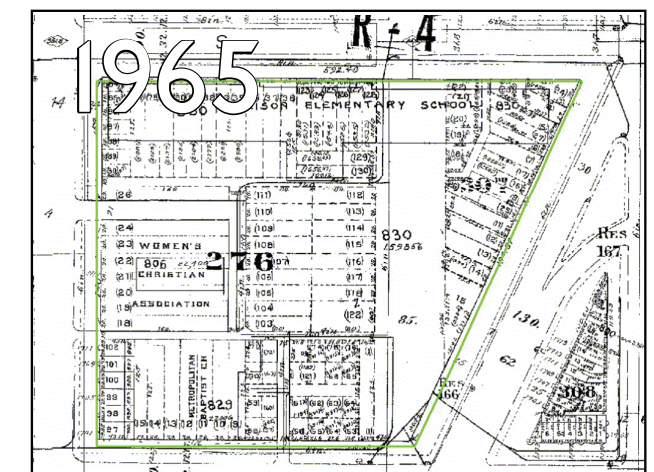
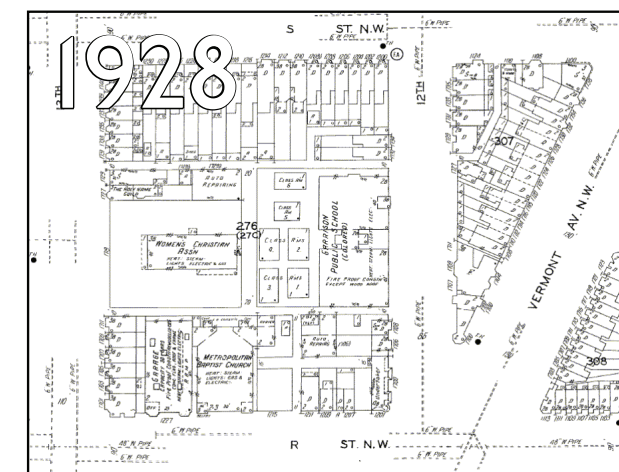
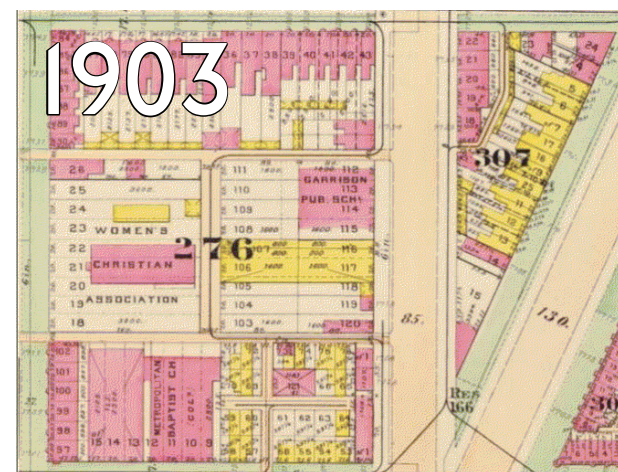
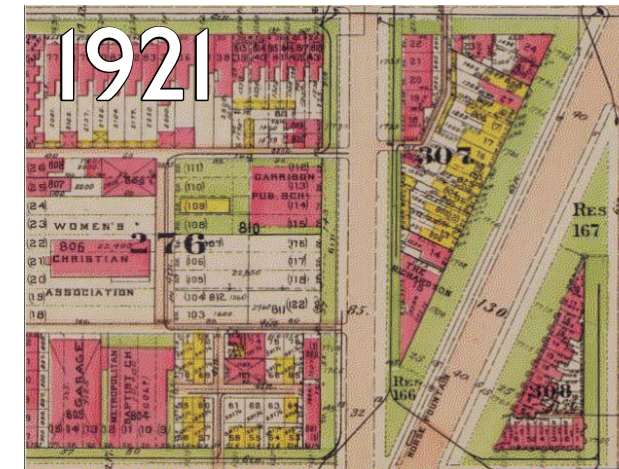
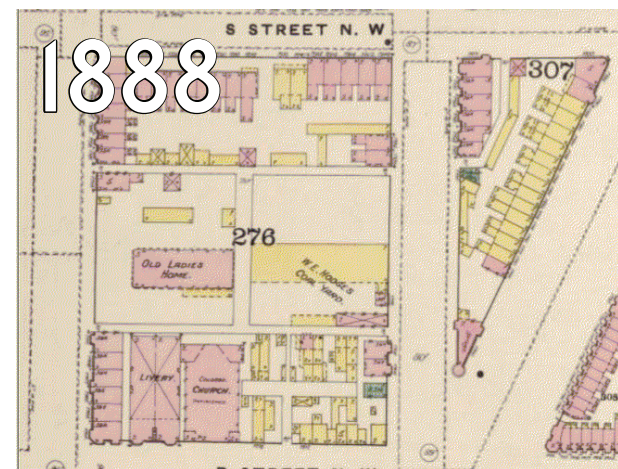
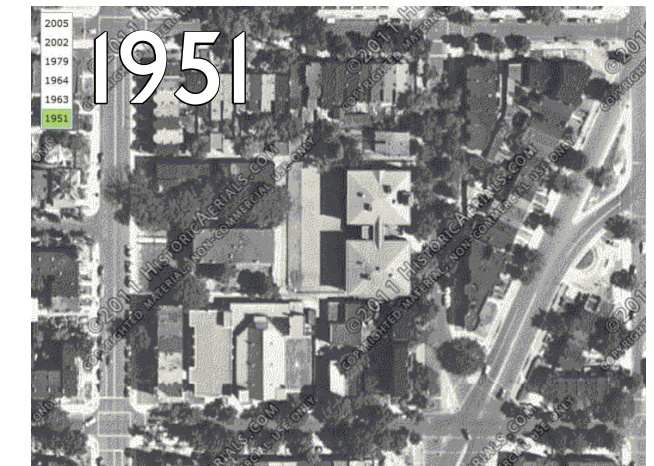
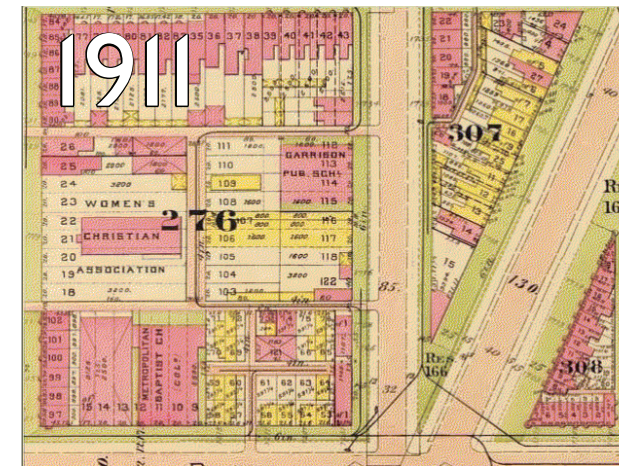
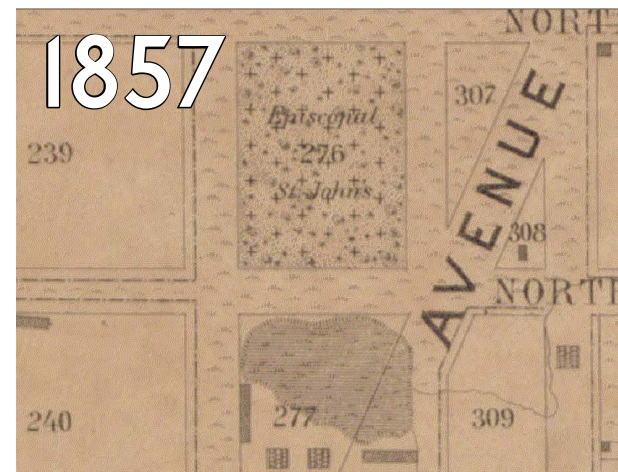


Ed Spec Program Elements not included, as per DGS/DCPS direction:

- Early Childhood Special Needs Classroom (-950 sf)
- Learning Disabled Classroom (3-5) (-900 sf)

FIRST FLOOR PLAN
BUILDING

The Garrison school site has served as the location of the neighborhood's school since as early as 1903.



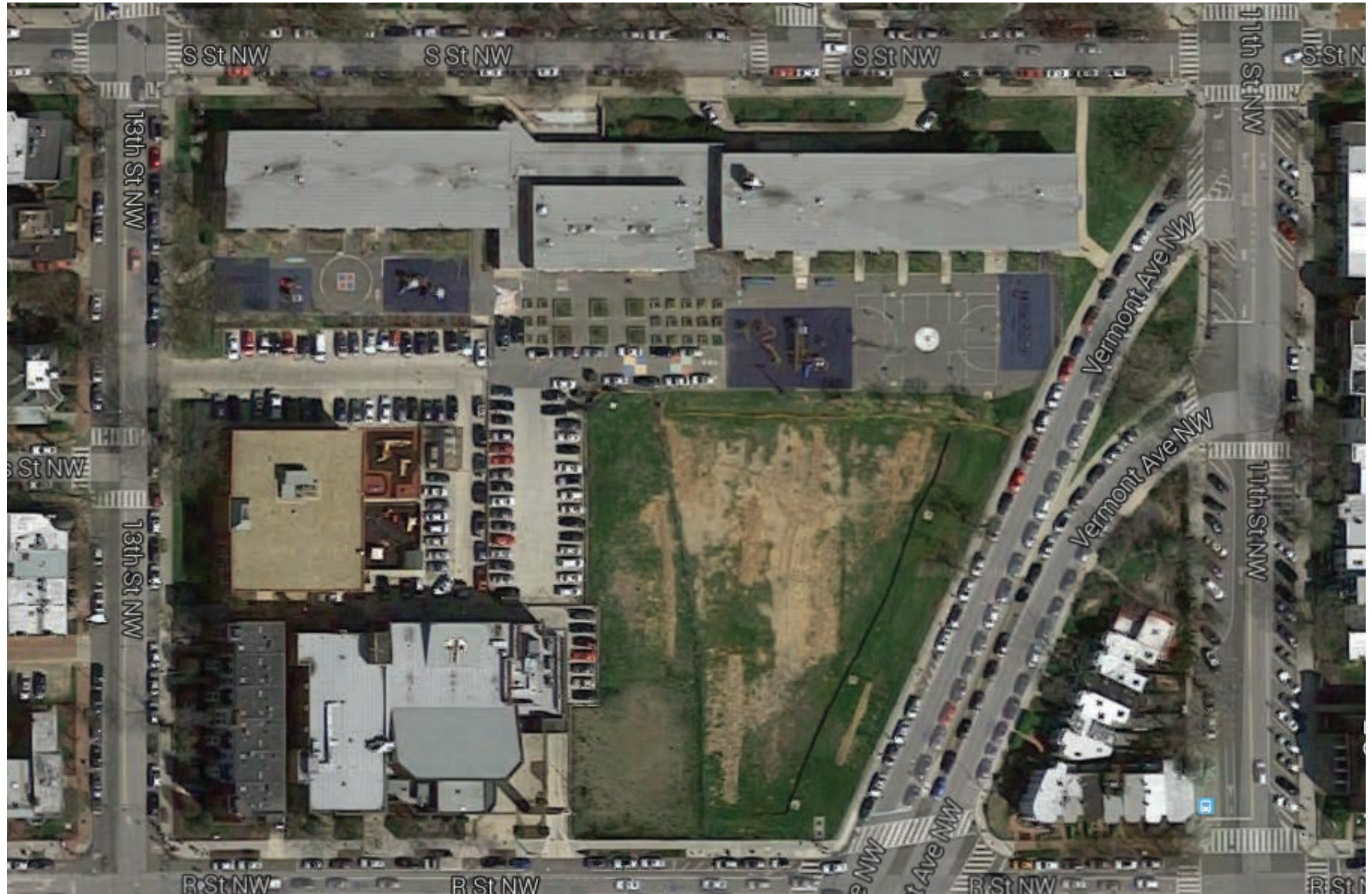
SITE HISTORY

SITE



2012 AERIAL VIEW

SITE



CURRENT AERIAL VIEW

SITE

Participatory process engaging teachers, staff, parents, community, neighborhood institutions, DC government agencies and elected officials to create and implement a vision for the school grounds and building.

The site concept was the outcome of a six-month participatory process that drew the community into the school and involved Garrison teachers and staff in the development of the site development program of uses and its relationship to the school's curricular goals.

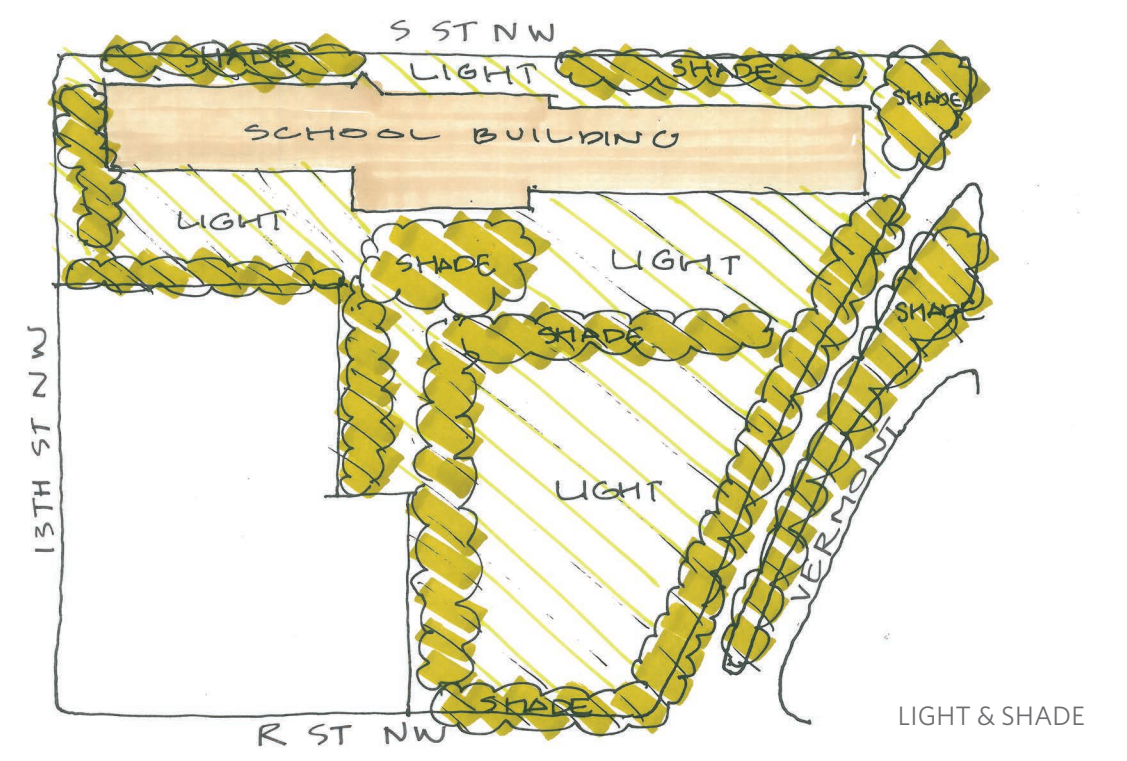
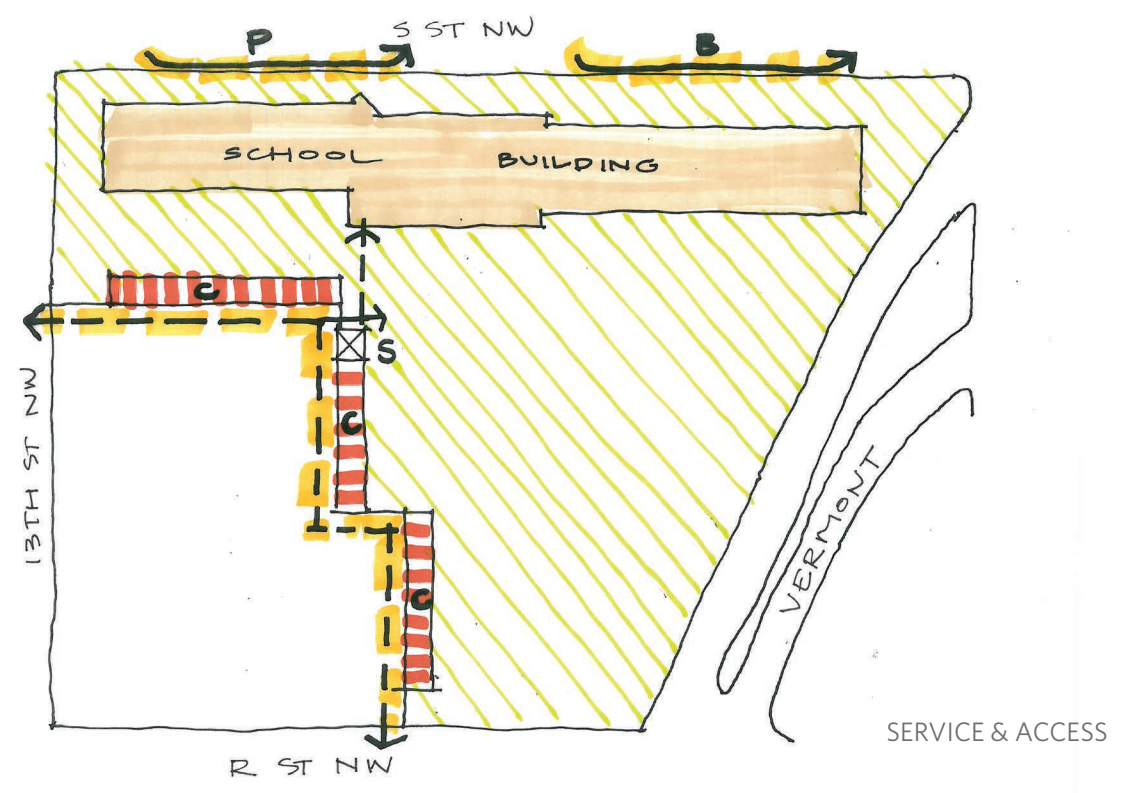
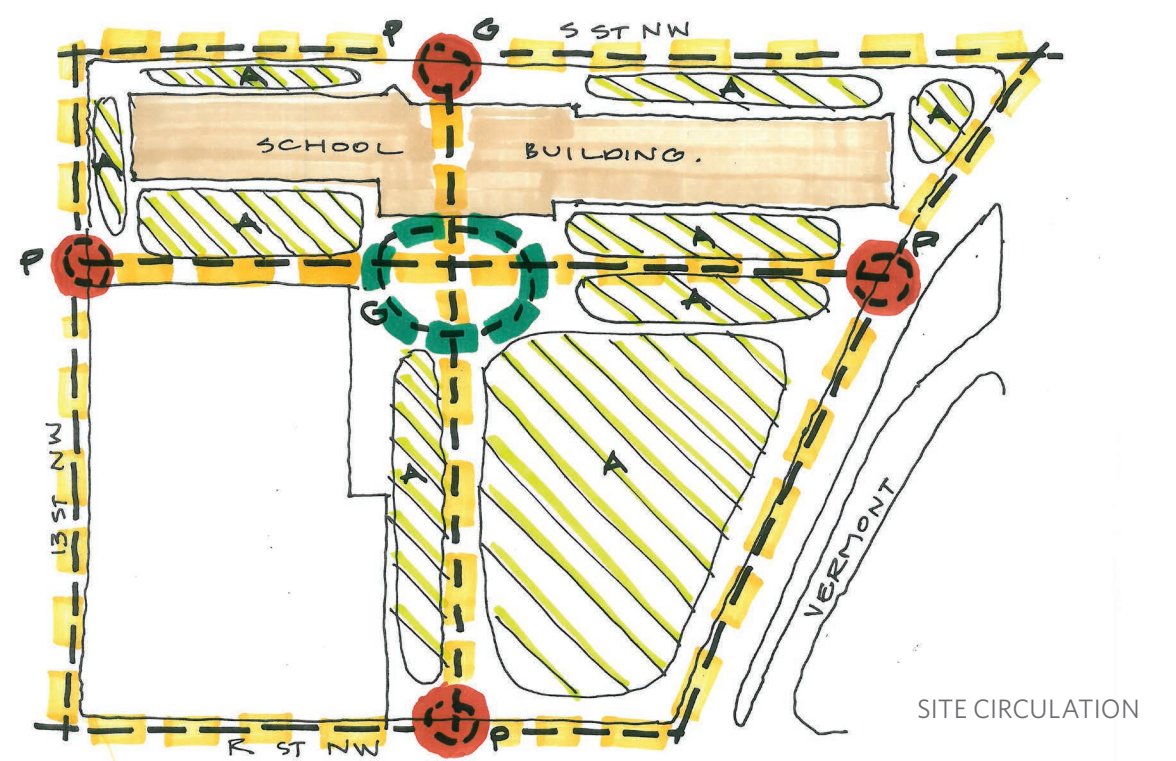
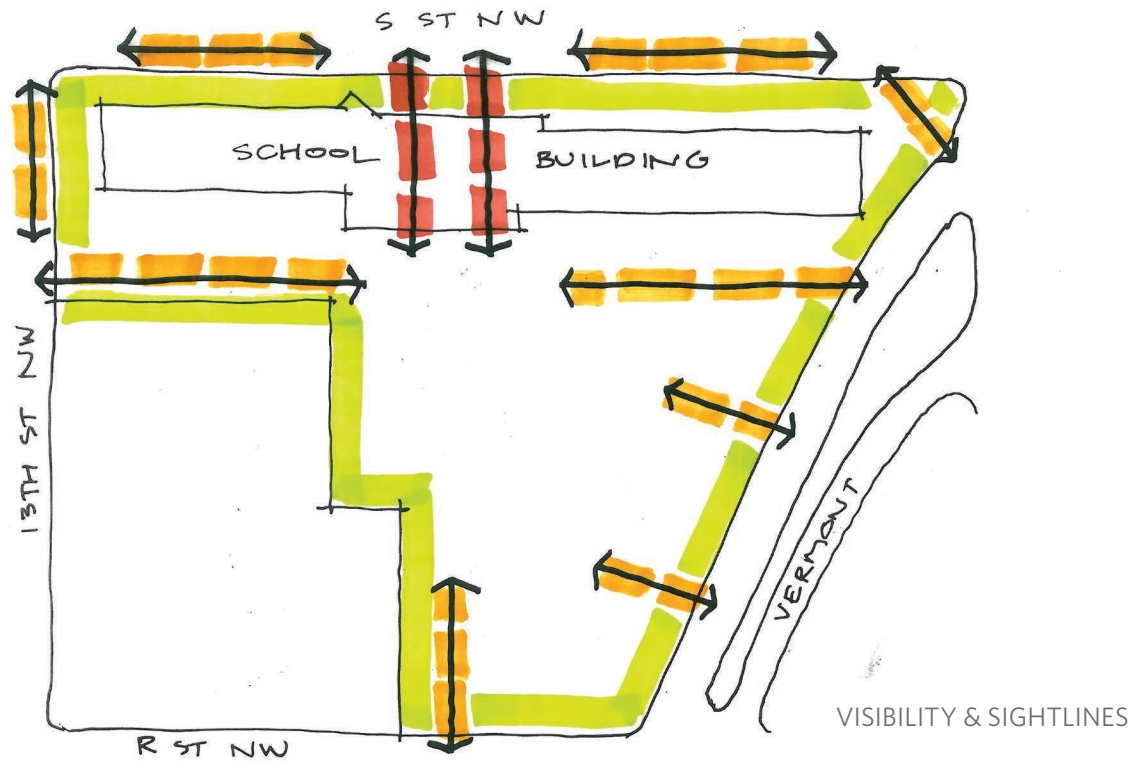
The site concept responds to the following goals:

- Garrison will be a school where our relationship with nature is a key to learning and where the nature surrounding it will be a nurturing environment in which to learn.
- Garrison's schoolyard will be an urban park, and a neighborhood park, meeting the needs of the school during school hours and the needs of the community outside school hours.
- By renovating the building to link with the re-envisioned schoolyard, the entire school (building and grounds) can become a more purposefully conceived community resource.



COMMUNITY VISIONING SESSION - MAY 30 2012

SITE



SITE



OASIS / OUTDOOR CLASSROOM



STODDERT SCHOOL
PERFORMANCE SPACE



NEIGHBORHOOD PARKS

SITE



STODDERT SCHOOL
ENVIRONMENTAL CLASSROOM



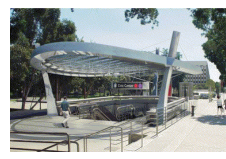
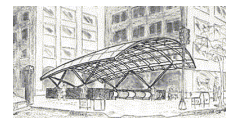
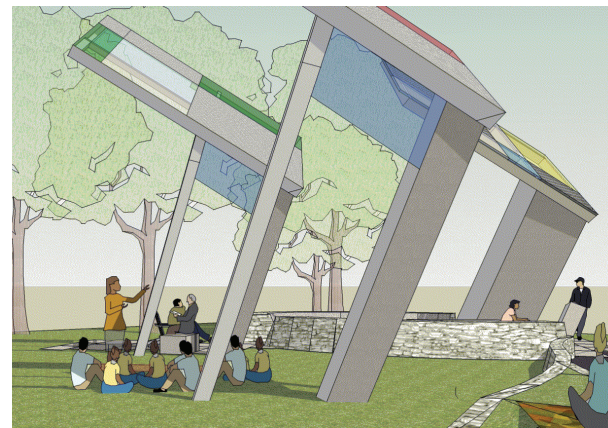
PLAYGROUNDS



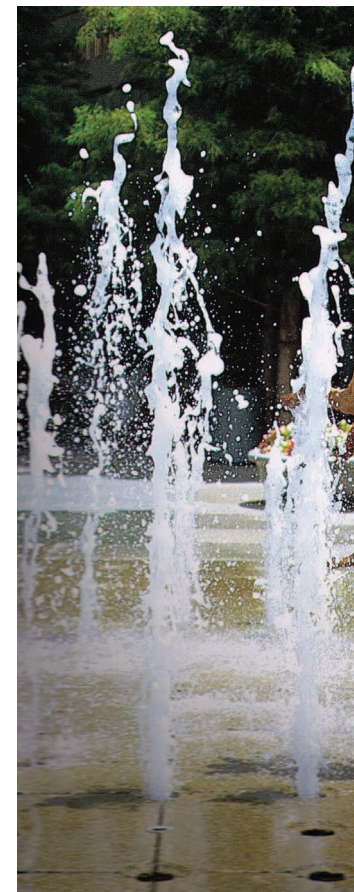
DUPONT CIRCLE



MOUNT PLEASANT
COMMUNITY SQUARE



PORTALS



SPRINKLER PLAZA

SITE



SITE

SPORTS

- ① MULTI-PURPOSE FIELD
- ② RUNNING TRACK
- ③ BASKETBALL COURT
- ④ EARLY CHILDHOOD MINI-FIELD

PLAY

- ⑤ PLAYGROUND
- ⑥ SPRINKLER PLAZA
- ⑦ EARLY CHILDHOOD PLAYGROUND

GATHERING & ART

- ⑧ OASIS / OUTDOOR CLASSROOM
- ⑨ PERFORMANCE SPACE
- ⑩ COMMUNITY SQUARE
- ⑪ GALLERY & GARRISON SIGN

NATURE & ENVIRONMENT

- ⑫ GARDENS / ENVIRONMENTAL CLASSROOM
- ⑬ URBAN ORCHARD
- ⑭ NATURE TRAIL

UTILITY

- ⑮ TOILETS & EQUIPMENT STORAGE
- ⑯ TRICYCLE STORAGE
- P PARKING - 40 SPACES PROVIDED



SITE PLAN AND PROGRAM



SITE