

HEALTH QUARTERLY STATEMENT

AS OF JUNE 30, 2014

OF THE CONDITION AND AFFAIRS OF THE

Unison Health Plan of the Capital Area, Inc.

NAIC Group Code 0707 0707 NAIC Company Code 13032 Employer's ID Number 26-0651931
(Current) (Prior)

Organized under the Laws of District of Columbia, State of Domicile or Port of Entry District of Columbia

Country of Domicile United States of America

Licensed as business type: Health Maintenance Organization

Is HMO Federally Qualified? Yes [] No [X]

Incorporated/Organized 05/03/2007 Commenced Business 03/01/2008

Statutory Home Office 701 Pennsylvania Ave NW, Suite 200 Washington, DC, US 20004
(Street and Number) (City or Town, State, Country and Zip Code)

Main Administrative Office 100 Penn Square East Philadelphia, PA, US 19107 215-231-3098
(Street and Number) (City or Town, State, Country and Zip Code) (Area Code) (Telephone Number)

Mail Address 100 Penn Square East Philadelphia, PA, US 19107
(Street and Number or P.O. Box) (City or Town, State, Country and Zip Code)

Primary Location of Books and Records 9900 Bren Road East 952-936-6615
(Street and Number) (City or Town, State, Country and Zip Code) (Area Code) (Telephone Number)

Internet Website Address www.unisonhealthplan.com

Statutory Statement Contact Daynita M Smith 952-979-6165
(Name) (Area Code) (Telephone Number)
daynita_smith@uhc.com 952-979-7825
(E-mail Address) (FAX Number)

OFFICERS

President, Chief Executive Officer Allison McConomy Davenport # Treasurer Robert Worth Oberrender
Secretary Christina Regina Palme-Krizak Chief Financial Officer James Edwin Love

OTHER

Michelle Marie Huntley Assistant Secretary

DIRECTORS OR TRUSTEES

Allison McConomy Davenport # Phillip Robert Franz # Robert Jacob David Menkes

State of Pennsylvania State of Minnesota State of Maryland
County of Philadelphia County of Henriepin County of Baltimore County

The officers of this reporting entity being duly sworn, each depose and say that they are the described officers of said reporting entity, and that on the reporting period stated above, all of the herein described assets were the absolute property of the said reporting entity, free and clear from any liens or claims thereon, except as herein stated, and that this statement, together with related exhibits, schedules and explanations therein contained, annexed or referred to, is a full and true statement of all the assets and liabilities and of the condition and affairs of the said reporting entity as of the reporting period stated above, and of its income and deductions therefrom for the period ended, and have been completed in accordance with the NAIC Annual Statement Instructions and Accounting Practices and Procedures manual except to the extent that: (1) state law may differ; or, (2) that state rules or regulations require differences in reporting not related to accounting practices and procedures, according to the best of their information, knowledge and belief, respectively. Furthermore, the scope of this attestation by the described officers also includes the related corresponding electronic filing with the NAIC, when required, that is an exact copy (except for formatting differences due to electronic filing) of the enclosed statement. The electronic filing may be requested by various regulators in lieu of or in addition to the enclosed statement.

Allison McConomy Davenport
Allison McConomy Davenport
President, Chief Executive Officer

Michelle Marie Huntley
Michelle Marie Huntley
Assistant Secretary

James Edwin Love, III
James Edwin Love, III
Chief Financial Officer

Subscribed and sworn to before me this 30th day of July 2014
[Signature]

Subscribed and sworn to before me this 5th day of August 2014
[Signature]

Subscribed and sworn to before me this 17th day of July 2014
[Signature]

COMMONWEALTH OF PENNSYLVANIA
Notarial Seal
Cherisse E. Wilson, Notary Public
Yeadon Boro, Delaware County
My Commission Expires May 19, 2015
MEMBER, PENNSYLVANIA ASSOCIATION OF NOTARIES

- a. Is this an original filing?..... Yes [X] No []
- b. If no,
 - 1. State the amendment number.....
 - 2. Date filed.....
 - 3. Number of pages attached.....

State of Minnesota
Notary Public
Mary E. Bydler
My Commission Expires 1/31/2015

ASSETS

	Current Statement Date			4 December 31 Prior Year Net Admitted Assets
	1 Assets	2 Nonadmitted Assets	3 Net Admitted Assets (Cols. 1 - 2)	
1. Bonds	338,543	0	338,543	10,528,031
2. Stocks:				
2.1 Preferred stocks	0	0	0	0
2.2 Common stocks	0	0	0	0
3. Mortgage loans on real estate:				
3.1 First liens	0	0	0	0
3.2 Other than first liens	0	0	0	0
4. Real estate:				
4.1 Properties occupied by the company (less \$ 0 encumbrances)	0	0	0	0
4.2 Properties held for the production of income (less \$ 0 encumbrances)	0	0	0	0
4.3 Properties held for sale (less \$ 0 encumbrances)	0	0	0	0
5. Cash (\$ 1,684,097), cash equivalents (\$ 0) and short-term investments (\$ 3,344,178)	5,028,275	0	5,028,275	8,799,068
6. Contract loans (including \$ 0 premium notes)	0	0	0	0
7. Derivatives	0	0	0	0
8. Other invested assets	0	0	0	0
9. Receivables for securities	0	0	0	0
10. Securities lending reinvested collateral assets	0	0	0	0
11. Aggregate write-ins for invested assets	0	0	0	0
12. Subtotals, cash and invested assets (Lines 1 to 11)	5,366,817	0	5,366,817	19,327,099
13. Title plants less \$ 0 charged off (for Title insurers only)	0	0	0	0
14. Investment income due and accrued	1,679	0	1,679	57,068
15. Premiums and considerations:				
15.1 Uncollected premiums and agents' balances in the course of collection	0	0	0	0
15.2 Deferred premiums, agents' balances and installments booked but deferred and not yet due (including \$ 0 earned but unbilled premiums)	0	0	0	0
15.3 Accrued retrospective premiums	0	0	0	0
16. Reinsurance:				
16.1 Amounts recoverable from reinsurers	0	0	0	739
16.2 Funds held by or deposited with reinsured companies	0	0	0	0
16.3 Other amounts receivable under reinsurance contracts	0	0	0	0
17. Amounts receivable relating to uninsured plans	0	0	0	0
18.1 Current federal and foreign income tax recoverable and interest thereon	0	0	0	1,976,696
18.2 Net deferred tax asset	234,261	0	234,261	217,369
19. Guaranty funds receivable or on deposit	0	0	0	0
20. Electronic data processing equipment and software	0	0	0	0
21. Furniture and equipment, including health care delivery assets (\$ 0)	0	0	0	0
22. Net adjustment in assets and liabilities due to foreign exchange rates	0	0	0	0
23. Receivables from parent, subsidiaries and affiliates	175,751	0	175,751	0
24. Health care (\$ 26,583) and other amounts receivable	647,808	621,224	26,583	16,821
25. Aggregate write-ins for other than invested assets	1,197,612	0	1,197,612	0
26. Total assets excluding Separate Accounts, Segregated Accounts and Protected Cell Accounts (Lines 12 to 25)	7,623,928	621,224	7,002,704	21,595,792
27. From Separate Accounts, Segregated Accounts and Protected Cell Accounts	0	0	0	0
28. Total (Lines 26 and 27)	7,623,928	621,224	7,002,704	21,595,792
DETAILS OF WRITE-INS				
1101.				
1102.				
1103.				
1198. Summary of remaining write-ins for Line 11 from overflow page	0	0	0	0
1199. Totals (Lines 1101 through 1103 plus 1198)(Line 11 above)	0	0	0	0
2501. Prepaid Premium Taxes	1,197,612	0	1,197,612	0
2502.				
2503.				
2598. Summary of remaining write-ins for Line 25 from overflow page	0	0	0	0
2599. Totals (Lines 2501 through 2503 plus 2598)(Line 25 above)	1,197,612	0	1,197,612	0

LIABILITIES, CAPITAL AND SURPLUS

	Current Period			Prior Year
	1 Covered	2 Uncovered	3 Total	4 Total
1. Claims unpaid (less \$3,197 reinsurance ceded)	688,519	0	688,519	4,561,771
2. Accrued medical incentive pool and bonus amounts	0	0	0	0
3. Unpaid claims adjustment expenses	799	0	799	11,579
4. Aggregate health policy reserves, including the liability of \$0 for medical loss ratio rebate per the Public Health Service Act	0	0	0	0
5. Aggregate life policy reserves	0	0	0	0
6. Property/casualty unearned premium reserve	0	0	0	0
7. Aggregate health claim reserves	0	0	0	0
8. Premiums received in advance	0	0	0	0
9. General expenses due or accrued	48,093	0	48,093	415,298
10.1 Current federal and foreign income tax payable and interest thereon (including \$0 on realized gains (losses))	54,804	0	54,804	0
10.2 Net deferred tax liability	0	0	0	0
11. Ceded reinsurance premiums payable	0	0	0	0
12. Amounts withheld or retained for the account of others	0	0	0	0
13. Remittances and items not allocated	0	0	0	0
14. Borrowed money (including \$0 current) and interest thereon \$0 (including \$0 current)	0	0	0	0
15. Amounts due to parent, subsidiaries and affiliates	0	0	0	345,736
16. Derivatives	0	0	0	0
17. Payable for securities	0	0	0	0
18. Payable for securities lending	0	0	0	0
19. Funds held under reinsurance treaties (with \$0 authorized reinsurers, \$0 unauthorized reinsurers and \$0 certified reinsurers)	0	0	0	0
20. Reinsurance in unauthorized and certified (\$0) companies	0	0	0	0
21. Net adjustments in assets and liabilities due to foreign exchange rates	0	0	0	0
22. Liability for amounts held under uninsured plans	0	0	0	47,081
23. Aggregate write-ins for other liabilities (including \$0 current)	6,929	0	6,929	71,326
24. Total liabilities (Lines 1 to 23)	799,144	0	799,144	5,452,791
25. Aggregate write-ins for special surplus funds	XXX	XXX	0	0
26. Common capital stock	XXX	XXX	1,000	1,000
27. Preferred capital stock	XXX	XXX	0	0
28. Gross paid in and contributed surplus	XXX	XXX	24,499,000	34,499,000
29. Surplus notes	XXX	XXX	0	0
30. Aggregate write-ins for other than special surplus funds	XXX	XXX	0	0
31. Unassigned funds (surplus)	XXX	XXX	(18,296,440)	(18,356,999)
32. Less treasury stock, at cost:				
32.10 shares common (value included in Line 26 \$0)	XXX	XXX	0	0
32.20 shares preferred (value included in Line 27 \$0)	XXX	XXX	0	0
33. Total capital and surplus (Lines 25 to 31 minus Line 32)	XXX	XXX	6,203,560	16,143,001
34. Total liabilities, capital and surplus (Lines 24 and 33)	XXX	XXX	7,002,704	21,595,792
DETAILS OF WRITE-INS				
2301. Unclaimed Property	6,929	0	6,929	71,326
2302.				
2303.				
2398. Summary of remaining write-ins for Line 23 from overflow page	0	0	0	0
2399. Totals (Lines 2301 through 2303 plus 2398)(Line 23 above)	6,929	0	6,929	71,326
2501.	XXX	XXX		
2502.	XXX	XXX		
2503.	XXX	XXX		
2598. Summary of remaining write-ins for Line 25 from overflow page	XXX	XXX	0	0
2599. Totals (Lines 2501 through 2503 plus 2598)(Line 25 above)	XXX	XXX	0	0
3001.	XXX	XXX		
3002.	XXX	XXX		
3003.	XXX	XXX		
3098. Summary of remaining write-ins for Line 30 from overflow page	XXX	XXX	0	0
3099. Totals (Lines 3001 through 3003 plus 3098)(Line 30 above)	XXX	XXX	0	0

STATEMENT OF REVENUE AND EXPENSES

	Current Year To Date		Prior Year To Date	Prior Year Ended December 31
	1 Uncovered	2 Total	3 Total	4 Total
1. Member Months	XXX	0	350,048	350,049
2. Net premium income (including \$ 0 non-health premium income)	XXX	0	104,952,742	117,527,147
3. Change in unearned premium reserves and reserve for rate credits	XXX	0	0	0
4. Fee-for-service (net of \$ 0 medical expenses)	XXX	0	0	0
5. Risk revenue	XXX	0	0	0
6. Aggregate write-ins for other health care related revenues	XXX	0	0	0
7. Aggregate write-ins for other non-health revenues	XXX	0	0	0
8. Total revenues (Lines 2 to 7)	XXX	0	104,952,742	117,527,147
Hospital and Medical:				
9. Hospital/medical benefits	0	(283,124)	71,417,365	52,361,086
10. Other professional services	0	(29,993)	1,090,300	17,992,684
11. Outside referrals	0	0	0	0
12. Emergency room and out-of-area	0	(58,115)	8,316,254	8,250,514
13. Prescription drugs	0	(3,722)	9,022,892	8,756,074
14. Aggregate write-ins for other hospital and medical	0	0	0	0
15. Incentive pool, withhold adjustments and bonus amounts	0	0	38,800	(60,625)
16. Subtotal (Lines 9 to 15)	0	(374,955)	89,885,611	87,299,733
Less:				
17. Net reinsurance recoveries	0	(8,612)	1,171,210	1,122,059
18. Total hospital and medical (Lines 16 minus 17)	0	(366,342)	88,714,401	86,177,674
19. Non-health claims (net)	0	0	0	0
20. Claims adjustment expenses, including \$ 88,026 cost containment expenses	0	149,316	4,544,824	7,815,810
21. General administrative expenses	0	125,143	9,103,285	6,550,503
22. Increase in reserves for life and accident and health contracts (including \$ 0 increase in reserves for life only)	0	0	0	0
23. Total underwriting deductions (Lines 18 through 22)	0	(91,883)	102,362,510	100,543,987
24. Net underwriting gain or (loss) (Lines 8 minus 23)	XXX	91,883	2,590,232	16,983,160
25. Net investment income earned	0	45,441	145,350	254,687
26. Net realized capital gains (losses) less capital gains tax of \$ 1,697	0	2,408	288	(33,707)
27. Net investment gains (losses) (Lines 25 plus 26)	0	47,848	145,638	220,980
28. Net gain or (loss) from agents' or premium balances charged off [(amount recovered \$ 0) (amount charged off \$ 0)]	0	0	0	0
29. Aggregate write-ins for other income or expenses	0	0	0	0
30. Net income or (loss) after capital gains tax and before all other federal income taxes (Lines 24 plus 27 plus 28 plus 29)	XXX	139,731	2,735,870	17,204,140
31. Federal and foreign income taxes incurred	XXX	47,802	1,016,555	5,849,046
32. Net income (loss) (Lines 30 minus 31)	XXX	91,929	1,719,315	11,355,094
DETAILS OF WRITE-INS				
0601.	XXX			
0602.	XXX			
0603.	XXX			
0698. Summary of remaining write-ins for Line 6 from overflow page	XXX	0	0	0
0699. Totals (Lines 0601 through 0603 plus 0698)(Line 6 above)	XXX	0	0	0
0701.	XXX			
0702.	XXX			
0703.	XXX			
0798. Summary of remaining write-ins for Line 7 from overflow page	XXX	0	0	0
0799. Totals (Lines 0701 through 0703 plus 0798)(Line 7 above)	XXX	0	0	0
1401.				
1402.				
1403.				
1498. Summary of remaining write-ins for Line 14 from overflow page	0	0	0	0
1499. Totals (Lines 1401 through 1403 plus 1498)(Line 14 above)	0	0	0	0
2901.				
2902.				
2903.				
2998. Summary of remaining write-ins for Line 29 from overflow page	0	0	0	0
2999. Totals (Lines 2901 through 2903 plus 2998)(Line 29 above)	0	0	0	0

STATEMENT OF REVENUE AND EXPENSES (Continued)

	1 Current Year to Date	2 Prior Year to Date	3 Prior Year Ended December 31
CAPITAL AND SURPLUS ACCOUNT			
33. Capital and surplus prior reporting year.....	16,143,001	29,554,443	29,554,443
34. Net income or (loss) from Line 32	91,929	1,719,315	11,355,094
35. Change in valuation basis of aggregate policy and claim reserves	0	0	0
36. Change in net unrealized capital gains (losses) less capital gains tax of \$ 0	0	0	0
37. Change in net unrealized foreign exchange capital gain or (loss)	0	0	0
38. Change in net deferred income tax	16,892	0	217,459
39. Change in nonadmitted assets	(48,262)	(18,104)	16,005
40. Change in unauthorized and certified reinsurance	0	0	0
41. Change in treasury stock	0	0	0
42. Change in surplus notes	0	0	0
43. Cumulative effect of changes in accounting principles.....	0	0	0
44. Capital Changes:			
44.1 Paid in	0	0	0
44.2 Transferred from surplus (Stock Dividend).....	0	0	0
44.3 Transferred to surplus.....	0	0	0
45. Surplus adjustments:			
45.1 Paid in	(10,000,000)	0	(25,000,000)
45.2 Transferred to capital (Stock Dividend)	0	0	0
45.3 Transferred from capital	0	0	0
46. Dividends to stockholders	0	0	0
47. Aggregate write-ins for gains or (losses) in surplus	0	0	0
48. Net change in capital & surplus (Lines 34 to 47)	(9,939,441)	1,701,211	(13,411,442)
49. Capital and surplus end of reporting period (Line 33 plus 48)	6,203,560	31,255,654	16,143,001
DETAILS OF WRITE-INS			
4701.			
4702.			
4703.			
4798. Summary of remaining write-ins for Line 47 from overflow page	0	0	0
4799. Totals (Lines 4701 through 4703 plus 4798)(Line 47 above)	0	0	0

STATEMENT AS OF JUNE 30, 2014 OF THE Unison Health Plan of the Capital Area, Inc.

CASH FLOW

	1 Current Year To Date	2 Prior Year To Date	3 Prior Year Ended December 31
Cash from Operations			
1. Premiums collected net of reinsurance	0	105,414,988	119,795,158
2. Net investment income	137,516	461,801	962,324
3. Miscellaneous income	0	0	0
4. Total (Lines 1 to 3)	137,516	105,876,789	120,757,482
5. Benefit and loss related payments	3,564,196	88,331,563	111,507,198
6. Net transfers to Separate Accounts, Segregated Accounts and Protected Cell Accounts	0	0	0
7. Commissions, expenses paid and aggregate write-ins for deductions	1,896,052	15,834,877	16,829,413
8. Dividends paid to policyholders	0	0	0
9. Federal and foreign income taxes paid (recovered) net of \$0 tax on capital gains (losses)	(1,982,001)	(290,305)	8,405,058
10. Total (Lines 5 through 9)	3,478,248	103,876,135	136,741,669
11. Net cash from operations (Line 4 minus Line 10)	(3,340,732)	2,000,654	(15,984,187)
Cash from Investments			
12. Proceeds from investments sold, matured or repaid:			
12.1 Bonds	10,155,823	2,066,363	26,986,248
12.2 Stocks	0	0	0
12.3 Mortgage loans	0	0	0
12.4 Real estate	0	0	0
12.5 Other invested assets	0	0	0
12.6 Net gains or (losses) on cash, cash equivalents and short-term investments	0	(633)	(633)
12.7 Miscellaneous proceeds	0	0	0
12.8 Total investment proceeds (Lines 12.1 to 12.7)	10,155,823	2,065,730	26,985,615
13. Cost of investments acquired (long-term only):			
13.1 Bonds	0	2,324,959	5,500,611
13.2 Stocks	0	0	0
13.3 Mortgage loans	0	0	0
13.4 Real estate	0	0	0
13.5 Other invested assets	0	0	0
13.6 Miscellaneous applications	0	0	0
13.7 Total investments acquired (Lines 13.1 to 13.6)	0	2,324,959	5,500,611
14. Net increase (or decrease) in contract loans and premium notes	0	0	0
15. Net cash from investments (Line 12.8 minus Line 13.7 and Line 14)	10,155,823	(259,229)	21,485,004
Cash from Financing and Miscellaneous Sources			
16. Cash provided (applied):			
16.1 Surplus notes, capital notes	0	0	0
16.2 Capital and paid in surplus, less treasury stock	(10,000,000)	0	(25,000,000)
16.3 Borrowed funds	0	0	0
16.4 Net deposits on deposit-type contracts and other insurance liabilities	0	0	0
16.5 Dividends to stockholders	0	0	0
16.6 Other cash provided (applied)	(585,883)	(1,098,804)	(753,384)
17. Net cash from financing and miscellaneous sources (Line 16.1 through Line 16.4 minus Line 16.5 plus Line 16.6)	(10,585,883)	(1,098,804)	(25,753,384)
RECONCILIATION OF CASH, CASH EQUIVALENTS AND SHORT-TERM INVESTMENTS			
18. Net change in cash, cash equivalents and short-term investments (Line 11, plus Lines 15 and 17)	(3,770,792)	642,621	(20,252,567)
19. Cash, cash equivalents and short-term investments:			
19.1 Beginning of year	8,799,068	29,051,635	29,051,635
19.2 End of period (Line 18 plus Line 19.1)	5,028,275	29,694,256	8,799,068

Note: Supplemental disclosures of cash flow information for non-cash transactions:

--	--	--	--

EXHIBIT OF PREMIUMS, ENROLLMENT AND UTILIZATION

	1 Total	Comprehensive (Hospital & Medical)		4 Medicare Supplement	5 Vision Only	6 Dental Only	7 Federal Employees Health Benefit Plan	8 Title XVIII Medicare	9 Title XIX Medicaid	10 Other
		2 Individual	3 Group							
Total Members at end of:										
1. Prior Year	0	0	0	0	0	0	0	0	0	0
2. First Quarter	0	0	0	0	0	0	0	0	0	0
3. Second Quarter	0	0	0	0	0	0	0	0	0	0
4. Third Quarter	0	0	0	0	0	0	0	0	0	0
5. Current Year	0	0	0	0	0	0	0	0	0	0
6. Current Year Member Months	0	0	0	0	0	0	0	0	0	0
Total Member Ambulatory Encounters for Period:										
7. Physician	0	0	0	0	0	0	0	0	0	0
8. Non-Physician	0	0	0	0	0	0	0	0	0	0
9. Total	0	0	0	0	0	0	0	0	0	0
10. Hospital Patient Days Incurred	0	0	0	0	0	0	0	0	0	0
11. Number of Inpatient Admissions	0	0	0	0	0	0	0	0	0	0
12. Health Premiums Written (a)	0	0	0	0	0	0	0	0	0	0
13. Life Premiums Direct	0	0	0	0	0	0	0	0	0	0
14. Property/Casualty Premiums Written	0	0	0	0	0	0	0	0	0	0
15. Health Premiums Earned	0	0	0	0	0	0	0	0	0	0
16. Property/Casualty Premiums Earned	0	0	0	0	0	0	0	0	0	0
17. Amount Paid for Provision of Health Care Services.....	3,565,222	33,992	0	0	0	0	0	0	3,531,230	0
18. Amount Incurred for Provision of Health Care Services	(374,955)	(8,097)	0	0	0	0	0	0	(366,858)	0

(a) For health premiums written: amount of Medicare Title XVIII exempt from state taxes or fees \$0

CLAIMS UNPAID AND INCENTIVE POOL, WITHHOLD AND BONUS (Reported and Unreported)

Aging Analysis of Unpaid Claims

1 Account	2 1 - 30 Days	3 31 - 60 Days	4 61 - 90 Days	5 91 - 120 Days	6 Over 120 Days	7 Total
Claims Unpaid (Reported)						
0299999 Aggregate accounts not individually listed-uncovered	0	0	0	0	0	0
0399999 Aggregate accounts not individually listed-covered	61,240	0	0	0	0	61,240
0499999 Subtotals	61,240	0	0	0	0	61,240
0599999 Unreported claims and other claim reserves						630,477
0699999 Total amounts withheld						0
0799999 Total claims unpaid						691,717
0899999 Accrued medical incentive pool and bonus amounts						0

UNDERWRITING AND INVESTMENT EXHIBIT

ANALYSIS OF CLAIMS UNPAID - PRIOR YEAR - NET OF REINSURANCE

Line of Business	Claims Paid Year to Date		Liability End of Current Quarter		5 Claims Incurred in Prior Years (Columns 1 + 3)	6 Estimated Claim Reserve and Claim Liability December 31 of Prior Year
	1 On Claims Incurred Prior to January 1 of Current Year	2 On Claims Incurred During the Year	3 On Claims Unpaid Dec. 31 of Prior Year	4 On Claims Incurred During the Year		
1. Comprehensive (hospital and medical)	10,347	0	2,165	0	12,512	30,852
2. Medicare Supplement	0	0	0	0	0	0
3. Dental Only	0	0	0	0	0	0
4. Vision Only	0	0	0	0	0	0
5. Federal Employees Health Benefits Plan	0	0	0	0	0	0
6. Title XVIII - Medicare	0	0	0	0	0	0
7. Title XIX - Medicaid	3,554,588	0	686,354	0	4,240,942	4,530,919
8. Other health	0	0	0	0	0	0
9. Health subtotal (Lines 1 to 8)	3,564,935	0	688,519	0	4,253,454	4,561,771
10. Healthcare receivables (a)	647,808	0	0	0	647,808	589,782
11. Other non-health	0	0	0	0	0	0
12. Medical incentive pools and bonus amounts	0	0	0	0	0	0
13. Totals (Lines 9-10+11+12)	2,917,127	0	688,519	0	3,605,646	3,971,989

(a) Excludes \$ 0 loans or advances to providers not yet expensed.

6

NOTES TO FINANCIAL STATEMENTS

1. SUMMARY OF SIGNIFICANT ACCOUNTING POLICIES

Organization and Operation

Unison Health Plan of the Capital Area, Inc. (the "Company") had a contract (the "Contract") with the Government of the District of Columbia, Office of Contracting and Procurement (the "District"), to provide health care services to Medicaid and Health Care Alliance ("Alliance"), a program for uninsured children and adults, eligible beneficiaries in the District of Columbia. This contract represented 100% of the Company's direct written premiums and was effective through April 30, 2013. The District executed an extension of the Company's provider contract for the period from May 1, 2013 to June 30, 2013. Effective July 1, 2013, the contract expired and the Company's operations were discontinued.

A. Accounting Practices

The financial statements of the Company are presented on the basis of accounting practices prescribed or permitted by the District of Columbia Department of Insurance, Securities and Banking (the "DISB").

The DISB recognizes only statutory accounting practices, prescribed or permitted by the District of Columbia, for determining and reporting the financial condition and results of operations of a health maintenance organization, for determining its solvency under District of Columbia Insurance Law. The state prescribes the use of the National Association of Insurance Commissioners' ("NAIC") Accounting Practices and Procedures manual ("NAIC SAP") in effect for the accounting periods covered in the financial statement.

(1-8) No significant differences exist between the practices prescribed or permitted by the District of Columbia and those prescribed or permitted by the NAIC SAP which materially affect the statutory basis net income and capital and surplus as illustrated in the table below (in thousands):

	State of Domicile	June 30, 2014	December 31, 2013
Net Income			
(1) Company state basis	District of Columbia	\$ 92	\$ 11,355
(2) State prescribed practices that increase/(decrease) NAIC SAP: None	District of Columbia	-	-
(3) State permitted practices that increase/(decrease) NAIC SAP: None	District of Columbia	-	-
(4) NAIC SAP (1-2-3=4)	District of Columbia	\$ 92	\$ 11,355
Surplus			
(5) Company state basis	District of Columbia	\$ 6,204	\$ 16,143
(6) State prescribed practices that increase/(decrease) NAIC SAP: None	District of Columbia	-	-
(7) State permitted practices that increase/(decrease) NAIC SAP: None	District of Columbia	-	-
(8) NAIC SAP (5-6-7=8)	District of Columbia	\$ 6,204	\$ 16,143

B. Use of Estimates in the Preparation of the Statutory Basis Financial Statements

No significant change.

C. Accounting Policy

No significant change.

2. ACCOUNTING CHANGES AND CORRECTION OF ERRORS

No significant change.

3. BUSINESS COMBINATIONS AND GOODWILL

A-D. No significant change.

4. DISCONTINUED OPERATIONS

Effective July 1, 2013, the Company's contract with the District to provide health care services to Medicaid and Alliance eligible beneficiaries expired and operations were discontinued. This did not require regulatory approval and the results of the Company's discontinued operations have been reported consistently with the Company's reporting of continued operations. The Company is committed to maintaining adequate operating cash and required capital and surplus levels to fund the run-out of related claims. In addition, the parent company, Three Rivers Holdings, Inc. ("TRH"), is committed to and has the financial resources for the Company to meet all of its financial obligations. In the event of an immediate and material cash demand, capital infusions or subordinated revolving credit loans would be executed to address cash requirements. There are no restrictions which would preclude this from happening in a timely manner.

5. INVESTMENTS AND OTHER INVESTED ASSETS**A. Mortgage Loans, including Mezzanine Real Estate Loans**

No significant change.

B. Debt restructuring

No significant change.

C. Reverse Mortgages

No significant change.

D. Loan-Backed Securities

- (1) Corporate bonds and government obligations include mortgage-backed securities, which are valued using the retrospective adjustment methodology. Prepayment assumptions for the determination of the amortized cost of mortgage-backed securities are based on a three-month constant prepayment rate history obtained from external data source vendors.
- (2) The Company did not recognize any other-than-temporary impairments ("OTTI") on mortgage-backed securities as of June 30, 2014.
- (3) As of June 30, 2014, the Company did not have mortgage-backed securities with any OTTI to report by CUSIP.
- (4) The following table illustrates the fair value, gross unrealized losses, and length of time that the mortgage-backed securities have been in a continuous unrealized loss position at June 30, 2014 and December 31, 2013 (in thousands):

	June 30, 2014
The aggregate amount of unrealized losses:	
1. Less than 12 months	\$ -
2. 12 Months or longer	-
The aggregate related fair value of securities with unrealized losses:	
1. Less than 12 months	-
2. 12 Months or longer	-
	December 31, 2013
The aggregate amount of unrealized losses:	
1. Less than 12 months	\$ (17)
2. 12 Months or longer	(14)
The aggregate related fair value of securities with unrealized losses:	
1. Less than 12 months	863
2. 12 Months or longer	321

- (5) The Company believes that it will collect all principal and interest due on all investments that have an amortized cost in excess of fair value.

E. Repurchase Agreements and/or Securities Lending Transactions

The Company does not have any repurchase agreements and/or securities lending transactions.

F. Real Estate

No significant change.

G. Investments in Low-Income Housing Tax Credits

No significant change.

H. Restricted Assets

No significant change.

I. Working Capital Finance Investments

Not applicable.

6. JOINT VENTURES, PARTNERSHIPS, AND LIMITED LIABILITY COMPANIES

A–B. No significant change.

7. INVESTMENT INCOME

A. The Company has admitted all investment income due and accrued in the accompanying statutory basis statements of admitted assets, liabilities, and capital and surplus.

The decrease from approximately \$255,000 as of December 31, 2013 to approximately \$45,000 as of June 30, 2014 is primarily due to the composition of holdings and fluctuations in bonds and short-investment balances to meet cash flow needs.

B. There were no investment income amounts excluded from the statutory basis financial statements.

8. DERIVATIVE INSTRUMENTS

A–F. No significant change.

9. INCOME TAXES

A–G. No significant change.

10. INFORMATION CONCERNING PARENT, SUBSIDIARIES, AND AFFILIATES

A–L. Material Related Party Transactions

The Company paid a \$10,000,000 and \$25,000,000 extraordinary return of capital in June 20, 2014 and December 27, 2013, respectively, to its parent (see Note 13).

11. DEBT

A–B. No significant change.

12. RETIREMENT PLANS, DEFERRED COMPENSATION, POSTEMPLOYMENT BENEFITS AND COMPENSATED ABSENCES, AND OTHER POSTRETIREMENT BENEFIT PLANS

A–F. The Company has no defined benefit plans, defined contribution plans, multiemployer plans, consolidated/holding company plans, postemployment benefits, and compensated absences plans and is not impacted by the Medicare Modernization Act on postretirement benefits, since all personnel are employees of United HealthCare Services, Inc. (“UHS”), which provides services to the Company under the terms of a management agreement.

13. CAPITAL AND SURPLUS, SHAREHOLDERS’ DIVIDEND RESTRICTIONS, AND QUASI-REORGANIZATIONS

(1–13) No significant change.

The Company paid a \$10,000,000 and \$25,000,000 extraordinary return of capital on June 20, 2014 and December 27, 2013, respectively, to TRH, which was approved by the DISB and recorded as a reduction to gross paid-in and contributed surplus in the accompanying statutory basis statements of admitted assets, liabilities, and capital and surplus. The Company did not receive any capital infusions as of June 30, 2014 or year ended December 31, 2013.

14. CONTINGENCIES

A–E. No significant change.

15. LEASES

A–B. No significant change.

16. INFORMATION ABOUT FINANCIAL INSTRUMENTS WITH OFF-BALANCE-SHEET RISK AND FINANCIAL INSTRUMENTS WITH CONCENTRATIONS OF CREDIT RISK

(1–4) No significant change.

17. SALE, TRANSFER, AND SERVICING OF FINANCIAL ASSETS AND EXTINGUISHMENTS OF LIABILITIES

A. The Company did not have any transfers of receivables reported as sales as of June 30, 2014 or December 31, 2013.

B. The Company did not have any transfer and servicing of financial assets as of June 30, 2014 or December 31, 2013.

C. No transactions involving wash sales of securities with an NAIC designation of 3 or below or unrated securities occurred as of June 30, 2014 or the year ended December 31, 2013.

18. GAIN OR LOSS TO THE REPORTING ENTITY FROM UNINSURED PLANS AND THE UNINSURED PORTION OF PARTIALLY INSURED PLANS

A–C. No significant change.

19. DIRECT PREMIUM WRITTEN/PRODUCED BY MANAGING GENERAL AGENTS/THIRD-PARTY ADMINISTRATORS

No significant change.

20. FAIR VALUE MEASUREMENT

The NAIC SAP defines fair value, establishes a framework for measuring fair value, and outlines the disclosure requirements related to fair value measurements. The fair value hierarchy is as follows:

Level 1 — Quoted (unadjusted) prices for identical assets in active markets.

Level 2 — Other observable inputs, either directly or indirectly, including:

- Quoted prices for similar assets in active markets
- Quoted prices for identical or similar assets in nonactive markets (few transactions, limited information, noncurrent prices, high variability over time, etc.)
- Inputs other than quoted prices that are observable for the asset (interest rates, yield curves, volatilities, default rates, etc.)
- Inputs that are derived principally from or corroborated by other observable market data.

Level 3 — Unobservable inputs that cannot be corroborated by observable market data.

The estimated fair values of bonds and short-term investments are based on quoted market prices, where available. The Company obtains one price for each security primarily from a third-party pricing service (“pricing service”), which generally uses quoted prices or other observable inputs for the determination of fair value. The pricing service normally derives the security prices through recently reported trades for identical or similar securities, making adjustments through the reporting date based upon available observable market information. For securities not actively traded, the pricing service may use quoted market prices of comparable instruments or discounted cash flow analyses, incorporating inputs that are currently observable in the markets for similar securities. Inputs that are often used in the valuation methodologies include, but are not limited to, non-binding broker quotes, benchmark yields, credit spreads, default rates and prepayment speeds. As the Company is responsible for the determination of fair value, it performs quarterly analyses on the prices received from the pricing service to determine whether the prices are reasonable estimates of fair value. Specifically, the Company compares the prices received from the pricing service to a secondary pricing source; prices reported by its custodian, its investment consultant and third-party investment advisors. Additionally, the Company compares changes in the reported market values and returns to relevant market indices to test the reasonableness of the reported prices. The Company’s internal price verification procedures and review of fair value methodology documentation provided by independent pricing services have not historically resulted in an adjustment in the prices obtained from the pricing service.

In instances in which the inputs used to measure fair value fall into different levels of the fair value hierarchy, the fair value measurement has been determined based on the lowest-level input that is significant to the fair value measurement in its entirety. The Company’s assessment of the significance of a particular item to the fair value measurement in its entirety requires judgment, including the consideration of inputs specific to the asset or liability.

STATEMENT AS OF JUNE 30, 2014 OF THE Unison Health Plan of the Capital Area, Inc.

A. Fair Value

(1–5) The Company does not have any financial assets that are measured and reported at fair value on the statutory basis statements of admitted assets, liabilities, and capital and surplus at June 30, 2014 and December 31, 2013.

B. Fair Value Combination — Not applicable.

C. Aggregate Fair Value Hierarchy

The aggregate fair value by hierarchy of all financial instruments as of June 30, 2014 and December 31, 2013, is presented in the table below (in thousands):

Types of Financial Investment	June 30, 2014					Not Practical Carrying Value
	Aggregate Fair Value	Admitted Assets	(Level 1)	(Level 2)	(Level 3)	
U.S. government and agency securities	\$ 341	\$ 338	\$ 341	\$ -	\$ -	\$ -
Money-market funds	3,344	3,344	3,344	-	-	-
Total bonds and short-term investments	<u>\$ 3,685</u>	<u>\$ 3,682</u>	<u>\$ 3,685</u>	<u>\$ -</u>	<u>\$ -</u>	<u>\$ -</u>

Types of Financial Investment	December 31, 2013					Not Practical Carrying Value
	Aggregate Fair Value	Admitted Assets	(Level 1)	(Level 2)	(Level 3)	
U.S. government and agency securities	\$ 4,492	\$ 4,530	\$ 2,050	\$ 2,442	\$ -	\$ -
City and county municipalities	450	450	-	450	-	-
Corporate debt securities	5,552	5,548	-	5,552	-	-
Money-market funds	3,050	3,050	3,050	-	-	-
Total bonds and short-term investments	<u>\$ 13,544</u>	<u>\$ 13,578</u>	<u>\$ 5,100</u>	<u>\$ 8,444</u>	<u>\$ -</u>	<u>\$ -</u>

U.S. government and agency securities in the tables above reflect short-term and long-term investment holdings only. Included as Level 1 in U.S. government and agency securities in the fair value hierarchy table above are U.S. Treasury securities of approximately \$341,000 and \$2,050,000 as of June 30, 2014 and December 31, 2013, respectively.

There are no commercial paper investments included in corporate debt securities in the fair value hierarchy table as of June 30, 2014 and December 31, 2013.

D. Not Practicable to Estimate Fair Value — Not applicable.

21. OTHER ITEMS

The Company elected to use rounding in reporting amounts in the notes to statutory basis financial statements.

A–H. No significant change.

I. Joint and Several Liabilities — Not applicable.

J. Risk Sharing Provisions of the Affordable Care Act

The Company did not write Accident and Health premiums in 2014 subject to the risk sharing provisions of the Affordable Care Act (“ACA”) on assets, liabilities, and revenue.

22. EVENTS SUBSEQUENT

No significant change.

23. REINSURANCE

A–C. No significant change.

24. RETROSPECTIVELY RATED CONTRACTS AND CONTRACTS SUBJECT TO REDETERMINATION

A–C. The Company does not have any retrospectively rated contracts or contracts subject to redetermination as of June 30, 2014 or December 31, 2013.

STATEMENT AS OF JUNE 30, 2014 OF THE Unison Health Plan of the Capital Area, Inc.

- D. The Company does not have any business subject to specific minimum loss ratio requirements as of June 30, 2014 and December 31, 2013.

25. CHANGE IN INCURRED CLAIMS AND CLAIMS ADJUSTMENT EXPENSES

Changes in estimates related to the prior year incurred claims are included in total hospital and medical expenses in the current year in the accompanying statutory basis statements of operations. The following tables disclose paid claims, incurred claims, and the balance in the claims unpaid and health care receivable at June 30, 2014 and December 31, 2013 (in thousands):

	June 30, 2014		
	Current Year Incurred Claims	Prior Years Incurred Claims	Total
Beginning of year claim reserve	\$ -	\$ (4,562)	\$ (4,562)
Paid claims, net of health care receivable and reinsurance recoveries collected	-	3,564	3,564
End of year claim reserve	<u>-</u>	<u>689</u>	<u>689</u>
Incurred claims excluding the change in health care receivable and reinsurance recoverables as presented below	-	(309)	(309)
Beginning of year health care receivable and reinsurance recoverables	-	590	590
End of year health care receivable and reinsurance recoverables	<u>-</u>	<u>(648)</u>	<u>(648)</u>
Total incurred claims	<u>\$ -</u>	<u>\$ (367)</u>	<u>\$ (367)</u>

	December 31, 2013		
	Current Year Incurred Claims	Prior Years Incurred Claims	Total
Beginning of year claim reserve	\$ -	\$ (30,125)	\$ (30,125)
Paid claims, net of health care receivable and reinsurance recoveries collected	87,094	24,413	111,507
End of year claim reserve	<u>1,422</u>	<u>3,140</u>	<u>4,562</u>
Incurred claims excluding the change in health care receivable and reinsurance recoverables as presented below	88,516	(2,572)	85,944
Beginning of year health care receivable	-	824	824
End of year health care receivable and reinsurance recoverables	<u>(292)</u>	<u>(298)</u>	<u>(590)</u>
Total incurred claims	<u>\$ 88,224</u>	<u>\$ (2,046)</u>	<u>\$ 86,178</u>

The liability for claims unpaid and health care receivables as of December 31, 2013 were approximately \$3,972,000. As of June 30, 2014, approximately \$3,564,000 has been paid for incurred claims attributable to insured events of prior years. Reserves remaining for prior years, net of healthcare receivable and reinsurance recoverables are approximately \$41,000 as a result of re-estimation of unpaid claims. Therefore, there has been approximately \$367,000 favorable prior year development since December 31, 2013 to June 30, 2014. The primary drivers consist of favorable development as a result of a change in the provision for adverse deviations in experience of approximately \$99,000, favorable development of approximately \$103,000 in retroactivity for inpatient, outpatient, physician, and pharmacy claims, approximately \$93,000 favorable development in provider settlement, and approximately \$86,000 of other favorable development. At December 31, 2013, the Company recorded approximately \$2,046,000 of favorable development related to favorable development of approximately \$2,090,000 in retroactivity for inpatient, outpatient, physician, and pharmacy claims and by favorable development as a result of a change in the provision for adverse deviations in experience of approximately \$1,922,000 offset by unfavorable development of approximately \$1,982,000 for provider settlement payments. Original estimates are increased or decreased, as additional information becomes known regarding individual claims.

The Company incurred claims adjustment expenses of approximately \$149,000 and \$7,816,000 for the six months ended June 30, 2014 and the year ended December 31, 2013, respectively. These costs are included in the management service fees paid by the Company to UHS as a part of its management agreement. The following tables disclose paid claims adjustment expense ("CAE"), incurred CAE, and the balance in the unpaid claim adjustment expenses reserve for the six months ended June 30, 2014 and the year ended December 31, 2013 (in thousands):

STATEMENT AS OF JUNE 30, 2014 OF THE Unison Health Plan of the Capital Area, Inc.

	June 30, 2014	December 31, 2013
Total claims adjustment expenses incurred	\$ 149	\$ 7,816
Less current year unpaid claims adjustment expenses	(1)	(12)
Add prior year unpaid claims adjustment expenses	<u>12</u>	<u>546</u>
Total claims adjustment expenses paid	<u>\$ 160</u>	<u>\$ 8,350</u>

26. INTERCOMPANY POOLING ARRANGEMENTS

A–G. No significant change.

27. STRUCTURED SETTLEMENTS

A–B. No significant change.

28. HEALTH CARE AND OTHER AMOUNTS RECEIVABLE

A–B. No significant change.

29. PARTICIPATING POLICIES

No significant change.

30. PREMIUM DEFICIENCY RESERVES

The following table summarizes the Company’s premium deficiency reserves as of June 30, 2014 and December 31, 2013 (in thousands):

	June 30, 2014
1. Liability carried for premium deficiency reserves	\$ -
2. Date of the most recent evaluation of this liability	<u>6/30/2014</u>
3. Was anticipated investment income utilized in this calculation?	Yes <input checked="" type="checkbox"/> No <input type="checkbox"/>
	December 31, 2013
1. Liability carried for premium deficiency reserves	\$ -
2. Date of the most recent evaluation of this liability	<u>12/31/2013</u>
3. Was anticipated investment income utilized in this calculation?	Yes <input checked="" type="checkbox"/> No <input type="checkbox"/>

31. ANTICIPATED SALVAGE AND SUBROGATION

No significant change.

GENERAL INTERROGATORIES

PART 1 - COMMON INTERROGATORIES

GENERAL

- 1.1 Did the reporting entity experience any material transactions requiring the filing of Disclosure of Material Transactions with the State of Domicile, as required by the Model Act? Yes [] No [X]
- 1.2 If yes, has the report been filed with the domiciliary state? Yes [] No []
- 2.1 Has any change been made during the year of this statement in the charter, by-laws, articles of incorporation, or deed of settlement of the reporting entity? Yes [] No [X]
- 2.2 If yes, date of change:
- 3.1 Is the reporting entity a member of an Insurance Holding Company System consisting of two or more affiliated persons, one or more of which is an insurer? Yes [X] No []
If yes, complete Schedule Y, Parts 1 and 1A.
- 3.2 Have there been any substantial changes in the organizational chart since the prior quarter end? Yes [X] No []
- 3.3 If the response to 3.2 is yes, provide a brief description of those changes.
April 1, 2014 - CareMedic Systems, LLC, a California limited liability company, merged with and into Optum360, LLC, a Delaware limited liability company.
April 1, 2014 - Lynx Medical Systems, LLC, a Washington limited liability company, merged with and into Optum360, LLC, a Delaware limited liability company.
April 1, 2014 - Oxford Health Insurance, Inc., a New York corporation, became a wholly-owned subsidiary of UnitedHealthcare Insurance Company, a Connecticut corporation, following the redemption and retirement of 309 shares of the issued and outstanding shares of Oxford Health Plans (NY), Inc. in consideration for the issued and outstanding shares of Oxford Health Insurance, Inc., the distribution of such shares from Oxford Health Plans LLC to UnitedHealth Group Incorporated, and the contribution of such shares to UnitedHealthcare Insurance Company.
April 1, 2014 - Dental Center Serviços Odontológicos Ltda., a Brazilian company, was acquired with Seisa Serviços Integrados de Saúde Ltda., a Brazilian company, owning 65.278% and Amil Assistência Médica Internacional S.A., a Brazilian company, owning 34.72%.
April 1, 2014 - Hospital AMA S.A., a Brazilian company, was acquired with Seisa Serviços Integrados de Saúde Ltda., a Brazilian company, owning 55% and Esho Empresas de Serviços Hospitalares S.A., a Brazilian company, owning 34.72%.
April 30, 2014 - Aveta Colorado, Inc., a Delaware corporation, merged with and into Aveta Tennessee, Inc, a Delaware corporation.
April 30, 2014 - Informed Choice HealthCare Alliance, Inc., an Illinois corporation, merged with and into Your Partner in Health Services, Inc., an Illinois corporation.
April 30, 2014 - Connexions HCI NM, LLC, a New Mexico limited liability
- 4.1 Has the reporting entity been a party to a merger or consolidation during the period covered by this statement? Yes [] No [X]
- 4.2 If yes, provide the name of the entity, NAIC Company Code, and state of domicile (use two letter state abbreviation) for any entity that has ceased to exist as a result of the merger or consolidation.
- | 1
Name of Entity | 2
NAIC Company Code | 3
State of Domicile |
|---------------------|------------------------|------------------------|
| | | |
5. If the reporting entity is subject to a management agreement, including third-party administrator(s), managing general agent(s), attorney-in-fact, or similar agreement, have there been any significant changes regarding the terms of the agreement or principals involved? Yes [] No [X] N/A []
If yes, attach an explanation.
- 6.1 State as of what date the latest financial examination of the reporting entity was made or is being made. 12/31/2011
- 6.2 State the as of date that the latest financial examination report became available from either the state of domicile or the reporting entity. This date should be the date of the examined balance sheet and not the date the report was completed or released. 12/31/2011
- 6.3 State as of what date the latest financial examination report became available to other states or the public from either the state of domicile or the reporting entity. This is the release date or completion date of the examination report and not the date of the examination (balance sheet date). 06/21/2013
- 6.4 By what department or departments?
District of Columbia Department of Insurance, Securities and Banking
- 6.5 Have all financial statement adjustments within the latest financial examination report been accounted for in a subsequent financial statement filed with Departments? Yes [] No [] N/A [X]
- 6.6 Have all of the recommendations within the latest financial examination report been complied with? Yes [] No [] N/A [X]
- 7.1 Has this reporting entity had any Certificates of Authority, licenses or registrations (including corporate registration, if applicable) suspended or revoked by any governmental entity during the reporting period? Yes [] No [X]
- 7.2 If yes, give full information:
- 8.1 Is the company a subsidiary of a bank holding company regulated by the Federal Reserve Board? Yes [] No [X]
- 8.2 If response to 8.1 is yes, please identify the name of the bank holding company.
- 8.3 Is the company affiliated with one or more banks, thrifts or securities firms? Yes [X] No []
- 8.4 If response to 8.3 is yes, please provide below the names and location (city and state of the main office) of any affiliates regulated by a federal regulatory services agency [i.e. the Federal Reserve Board (FRB), the Office of the Comptroller of the Currency (OCC), the Federal Deposit Insurance Corporation (FDIC) and the Securities Exchange Commission (SEC)] and identify the affiliate's primary federal regulator.

1 Affiliate Name	2 Location (City, State)	3 FRB	4 OCC	5 FDIC	6 SEC
Optum Bank, Inc.	Salt Lake City, UT	NO	NO	YES	NO

GENERAL INTERROGATORIES

- 9.1 Are the senior officers (principal executive officer, principal financial officer, principal accounting officer or controller, or persons performing similar functions) of the reporting entity subject to a code of ethics, which includes the following standards? Yes No
 (a) Honest and ethical conduct, including the ethical handling of actual or apparent conflicts of interest between personal and professional relationships;
 (b) Full, fair, accurate, timely and understandable disclosure in the periodic reports required to be filed by the reporting entity;
 (c) Compliance with applicable governmental laws, rules and regulations;
 (d) The prompt internal reporting of violations to an appropriate person or persons identified in the code; and
 (e) Accountability for adherence to the code.
 9.11 If the response to 9.1 is No, please explain:
 9.2 Has the code of ethics for senior managers been amended? Yes No
 9.21 If the response to 9.2 is Yes, provide information related to amendment(s).
 9.3 Have any provisions of the code of ethics been waived for any of the specified officers? Yes No
 9.31 If the response to 9.3 is Yes, provide the nature of any waiver(s).

FINANCIAL

- 10.1 Does the reporting entity report any amounts due from parent, subsidiaries or affiliates on Page 2 of this statement? Yes No
 10.2 If yes, indicate any amounts receivable from parent included in the Page 2 amount: \$ 175,751

INVESTMENT

- 11.1 Were any of the stocks, bonds, or other assets of the reporting entity loaned, placed under option agreement, or otherwise made available for use by another person? (Exclude securities under securities lending agreements.) Yes No
 11.2 If yes, give full and complete information relating thereto:
 12. Amount of real estate and mortgages held in other invested assets in Schedule BA: \$ 0
 13. Amount of real estate and mortgages held in short-term investments: \$ 0
 14.1 Does the reporting entity have any investments in parent, subsidiaries and affiliates? Yes No
 14.2 If yes, please complete the following:
- | | 1 | 2 |
|---|---|--|
| | Prior Year-End
Book/Adjusted
Carrying Value | Current Quarter
Book/Adjusted
Carrying Value |
| 14.21 Bonds | \$ 0 | \$ 0 |
| 14.22 Preferred Stock | \$ 0 | \$ 0 |
| 14.23 Common Stock | \$ 0 | \$ 0 |
| 14.24 Short-Term Investments | \$ 0 | \$ 0 |
| 14.25 Mortgage Loans on Real Estate | \$ 0 | \$ 0 |
| 14.26 All Other | \$ 0 | \$ 0 |
| 14.27 Total Investment in Parent, Subsidiaries and Affiliates (Subtotal Lines 14.21 to 14.26) | \$ 0 | \$ 0 |
| 14.28 Total Investment in Parent included in Lines 14.21 to 14.26 above | \$ 0 | \$ 0 |
- 15.1 Has the reporting entity entered into any hedging transactions reported on Schedule DB? Yes No
 15.2 If yes, has a comprehensive description of the hedging program been made available to the domiciliary state? Yes No
 If no, attach a description with this statement.

GENERAL INTERROGATORIES

16. For the reporting entity's security lending program, state the amount of the following as of the current statement date:
- 16.1 Total fair value of reinvested collateral assets reported on Schedule DL, Parts 1 and 2\$0
 - 16.2 Total book adjusted/carrying value of reinvested collateral assets reported on Schedule DL, Parts 1 and 2\$0
 - 16.3 Total payable for securities lending reported on the liability page\$0

17. Excluding items in Schedule E - Part 3 - Special Deposits, real estate, mortgage loans and investments held physically in the reporting entity's offices, vaults or safety deposit boxes, were all stocks, bonds and other securities, owned throughout the current year held pursuant to a custodial agreement with a qualified bank or trust company in accordance with Section 1, III - General Examination Considerations, F. Outsourcing of Critical Functions, Custodial or Safekeeping Agreements of the NAIC Financial Condition Examiners Handbook? Yes [X] No []
- 17.1 For all agreements that comply with the requirements of the NAIC Financial Condition Examiners Handbook, complete the following:

1 Name of Custodian(s)	2 Custodian Address
North Trust	50 S. LaSalle, Chicago, IL 60675
Bank of New York Mellon	Global Liquidity Services, 1 Wall St, 14th Floor, New York, NY 10286

- 17.2 For all agreements that do not comply with the requirements of the NAIC Financial Condition Examiners Handbook, provide the name, location and a complete explanation:

1 Name(s)	2 Location(s)	3 Complete Explanation(s)

- 17.3 Have there been any changes, including name changes, in the custodian(s) identified in 17.1 during the current quarter? Yes [] No [X]
- 17.4 If yes, give full information relating thereto:

1 Old Custodian	2 New Custodian	3 Date of Change	4 Reason

- 17.5 Identify all investment advisors, brokers/dealers or individuals acting on behalf of broker/dealers that have access to the investment accounts, handle securities and have authority to make investments on behalf of the reporting entity:

1 Central Registration Depository	2 Name(s)	3 Address
113878	McDonnell Investment Management, LLC	1515 West 22nd Street, Suite 1100, Oak Brook, IL 60523 ...

- 18.1 Have all the filing requirements of the Purposes and Procedures Manual of the NAIC Securities Valuation Office been followed? Yes [X] No []
- 18.2 If no, list exceptions:

GENERAL INTERROGATORIES

PART 2 - HEALTH

1. Operating Percentages:
- 1.1 A&H loss percent0.0 %
- 1.2 A&H cost containment percent0.0 %
- 1.3 A&H expense percent excluding cost containment expenses0.0 %
- 2.1 Do you act as a custodian for health savings accounts? Yes [] No [X]
- 2.2 If yes, please provide the amount of custodial funds held as of the reporting date\$0
- 2.3 Do you act as an administrator for health savings accounts? Yes [] No [X]
- 2.4 If yes, please provide the balance of the funds administered as of the reporting date\$0

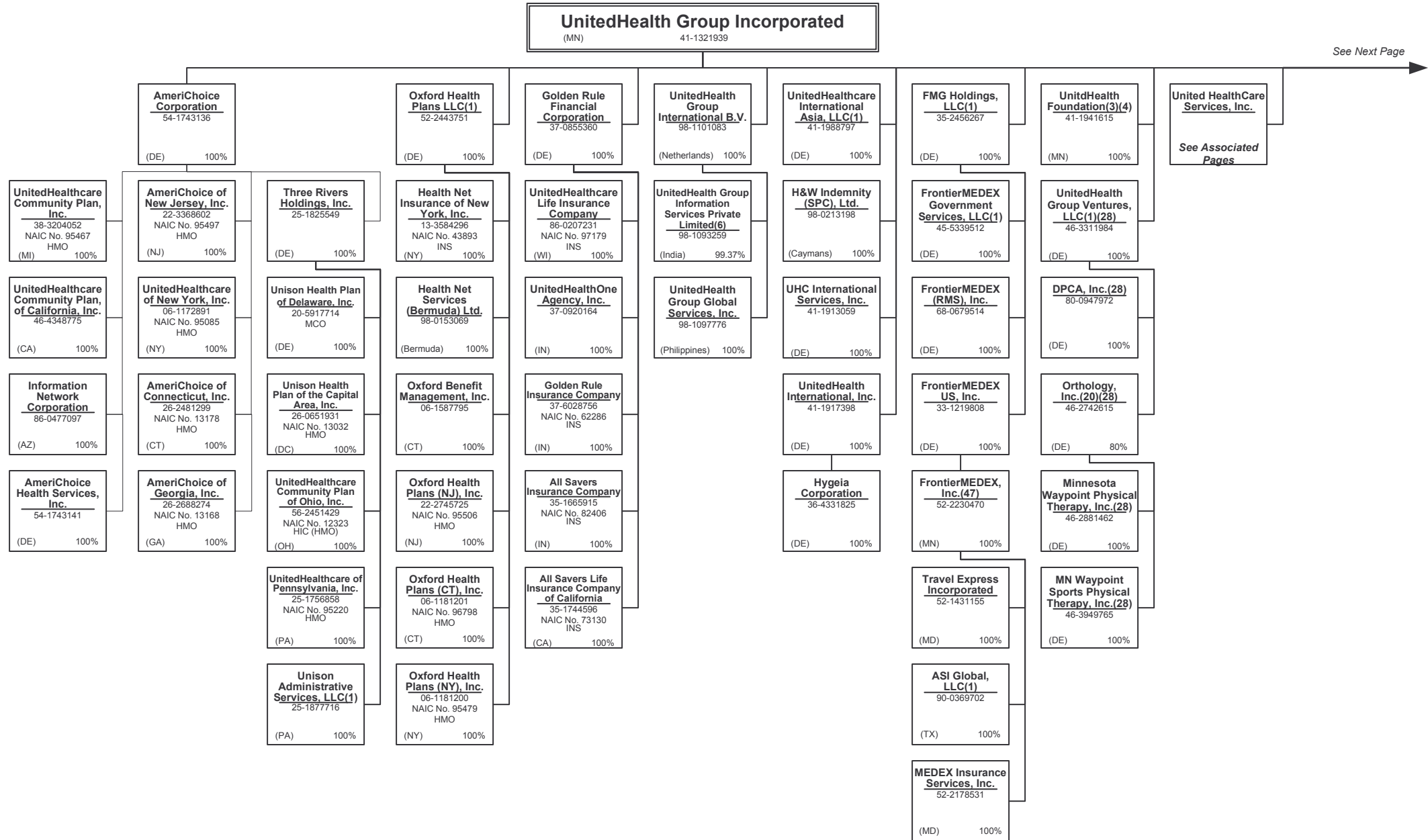
Schedule S - Ceded Reinsurance

N O N E

Schedule T - Premiums and Other Considerations

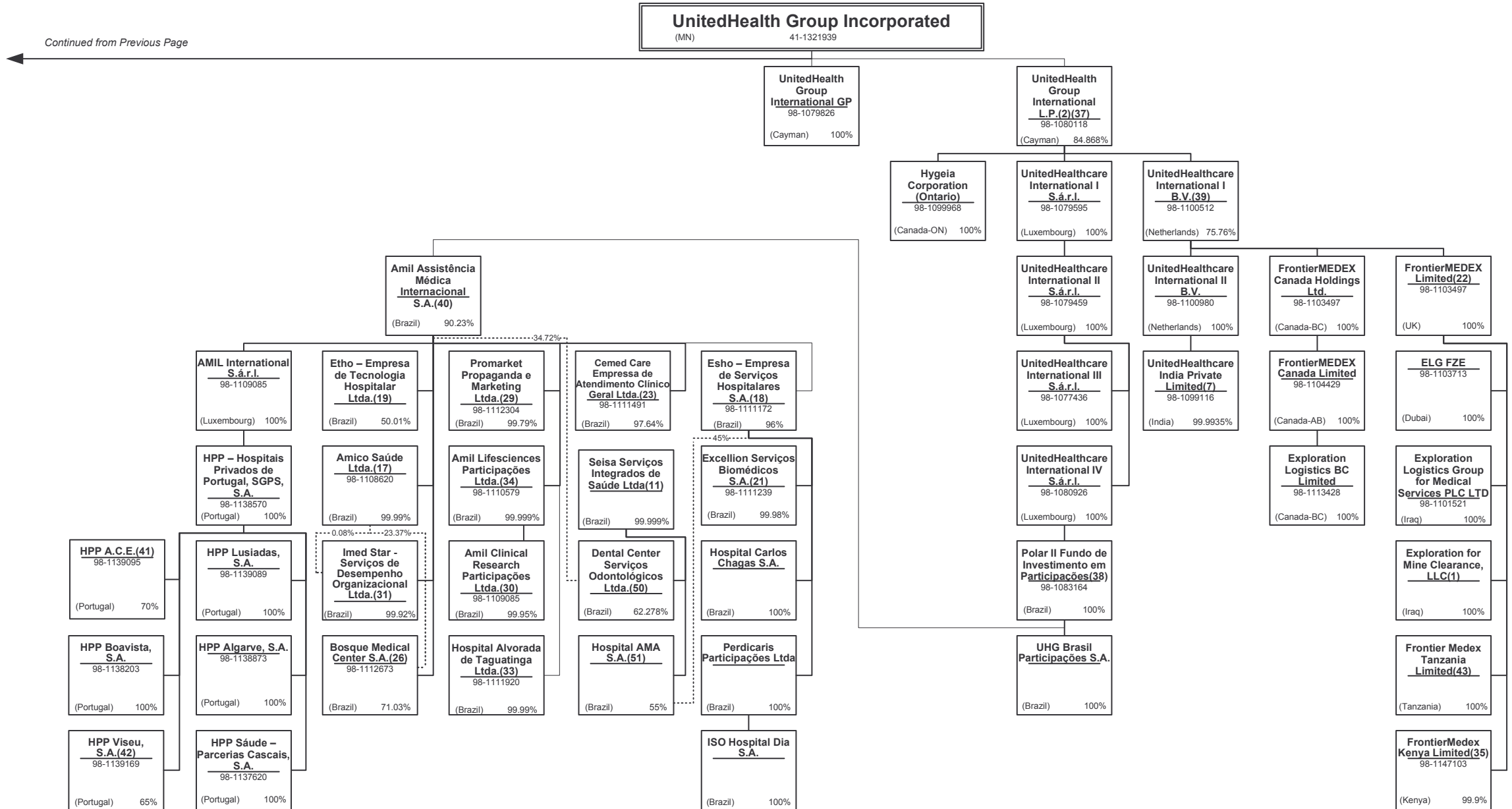
N O N E

SCHEDULE Y - INFORMATION CONCERNING ACTIVITIES OF INSURER MEMBERS OF A HOLDING COMPANY GROUP
PART 1 - ORGANIZATIONAL CHART



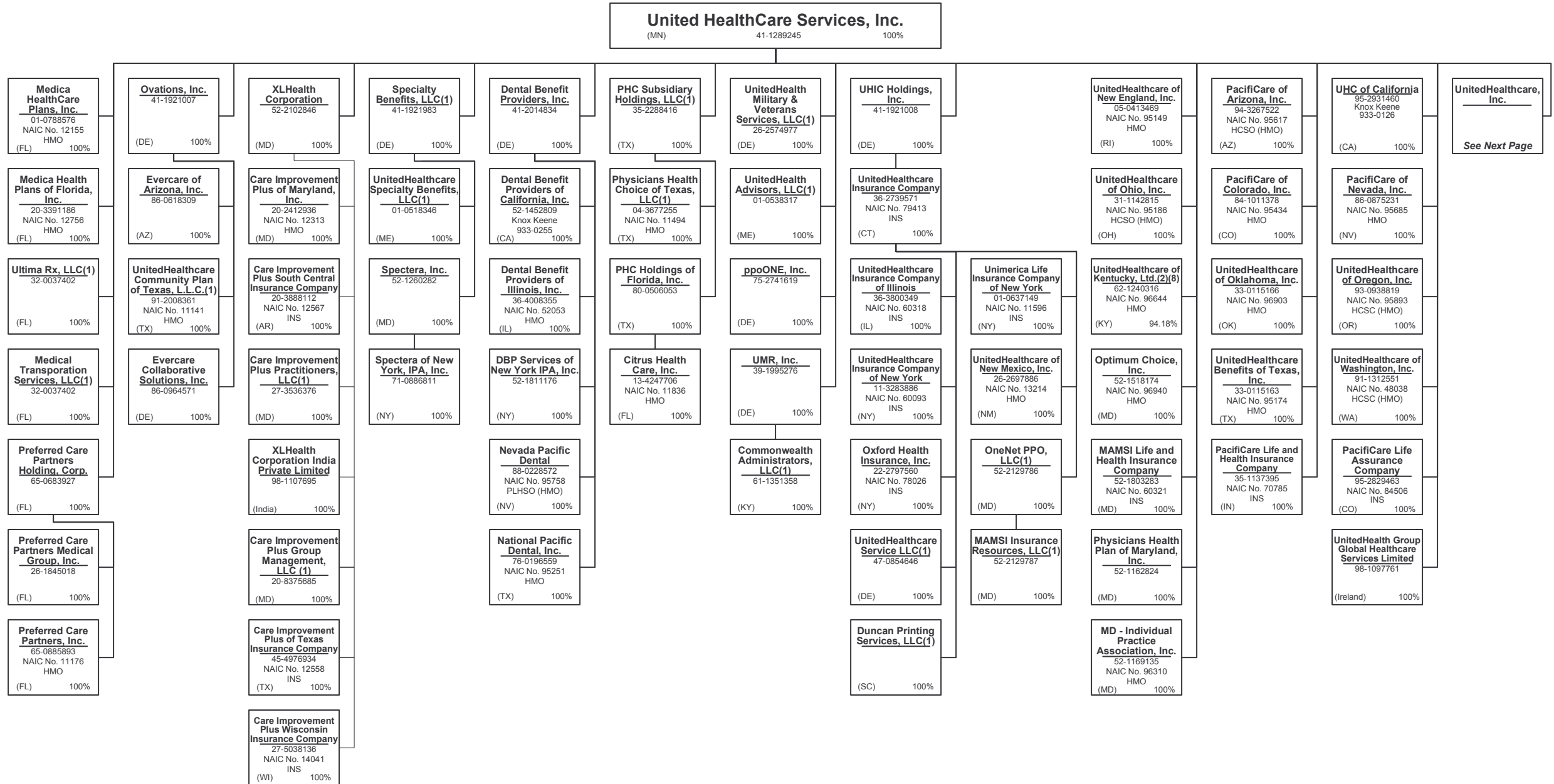
See Next Page →

SCHEDULE Y - INFORMATION CONCERNING ACTIVITIES OF INSURER MEMBERS OF A HOLDING COMPANY GROUP
PART 1 - ORGANIZATIONAL CHART



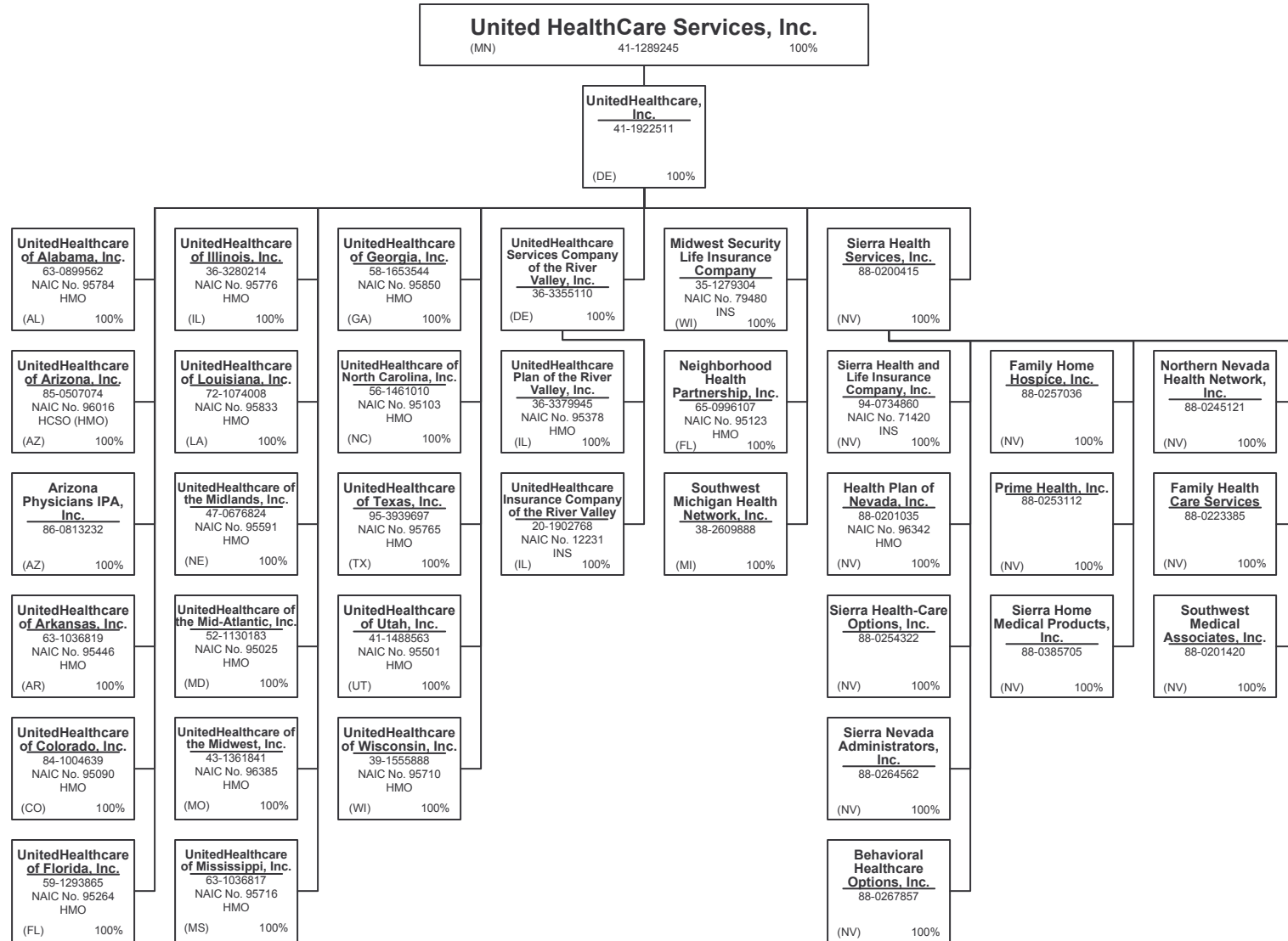
SCHEDULE Y - INFORMATION CONCERNING ACTIVITIES OF INSURER MEMBERS OF A HOLDING COMPANY GROUP

PART 1 - ORGANIZATIONAL CHART



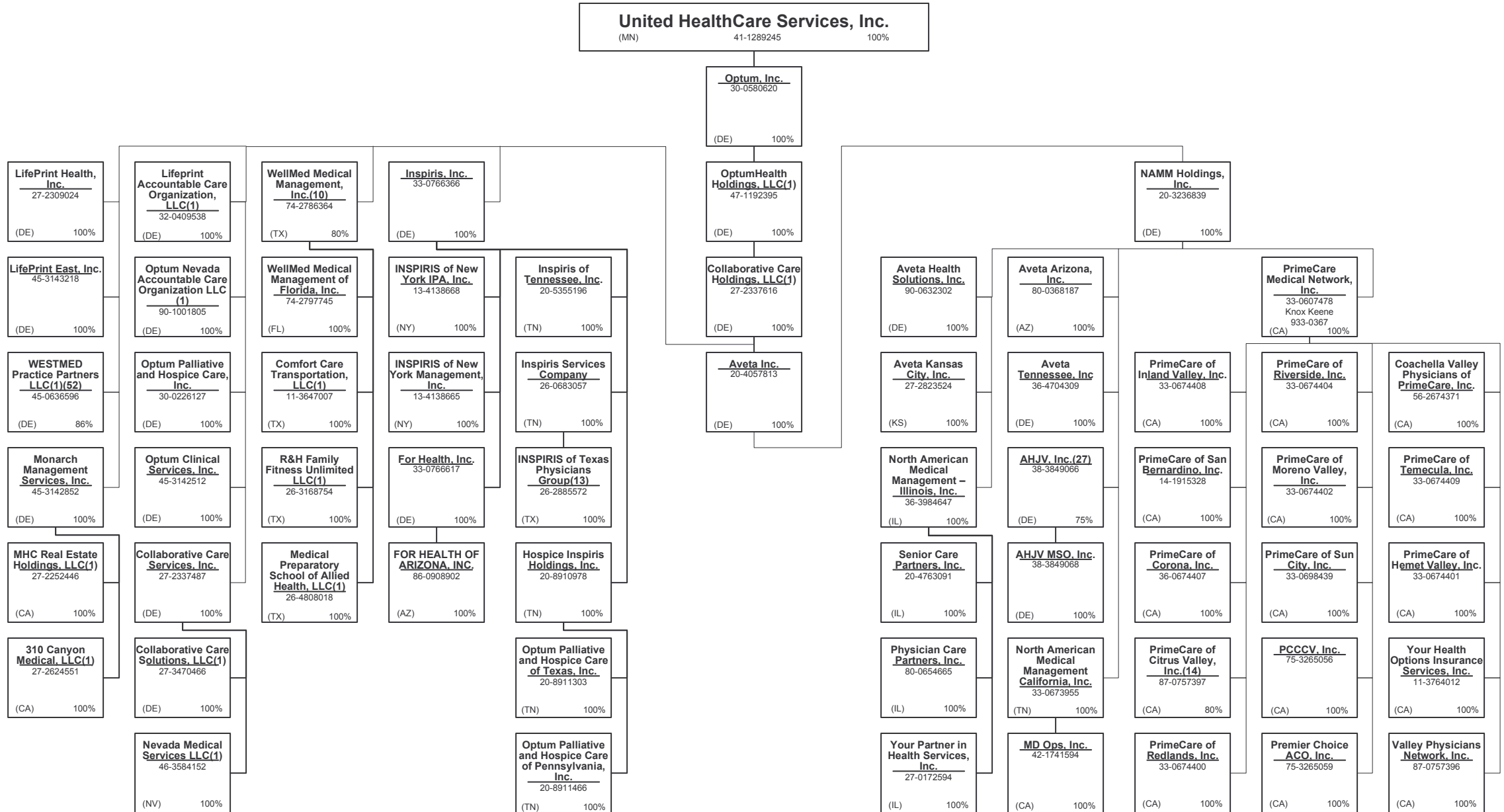
See Next Page

SCHEDULE Y - INFORMATION CONCERNING ACTIVITIES OF INSURER MEMBERS OF A HOLDING COMPANY GROUP
PART 1 - ORGANIZATIONAL CHART



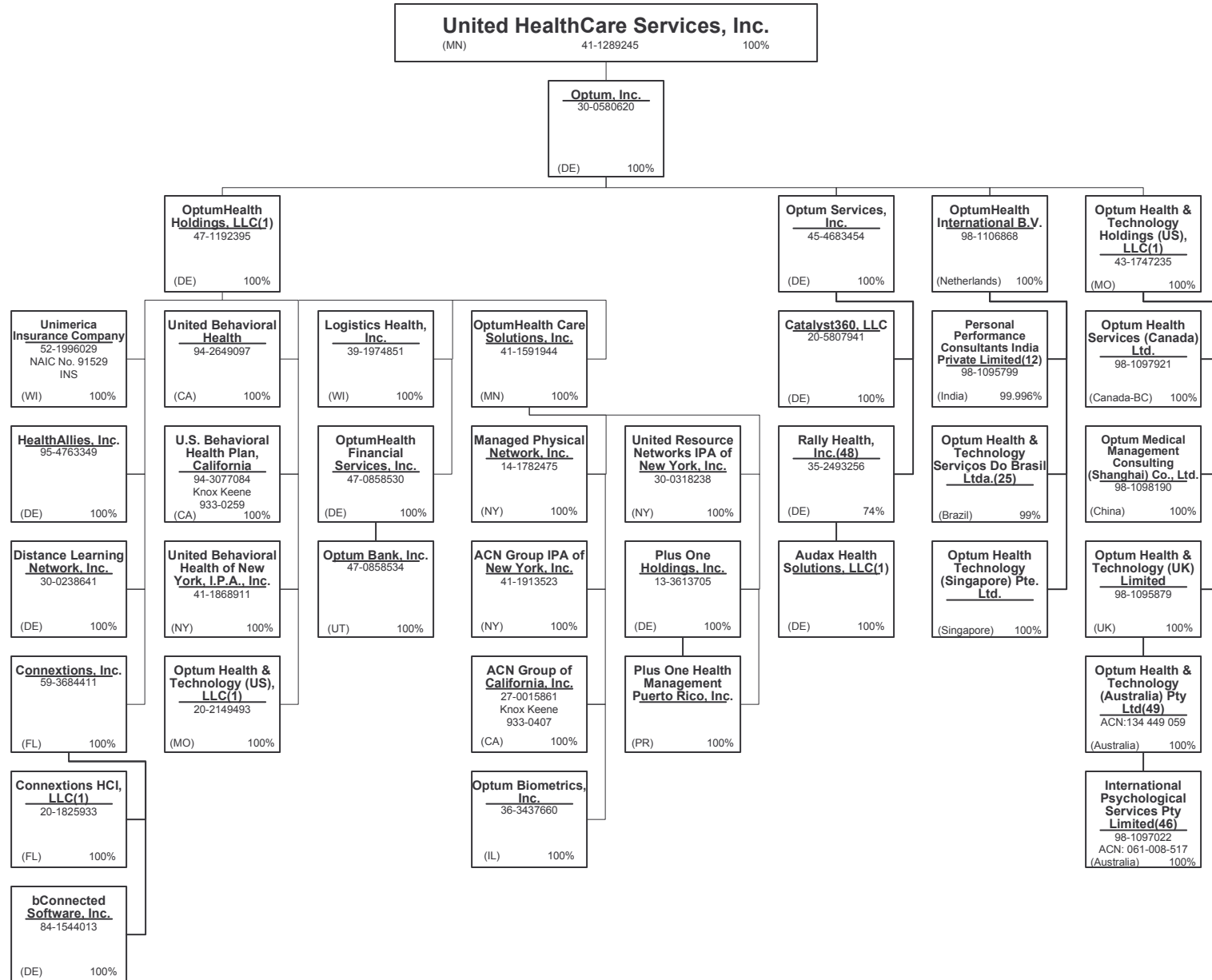
SCHEDULE Y - INFORMATION CONCERNING ACTIVITIES OF INSURER MEMBERS OF A HOLDING COMPANY GROUP

PART 1 - ORGANIZATIONAL CHART



15.4

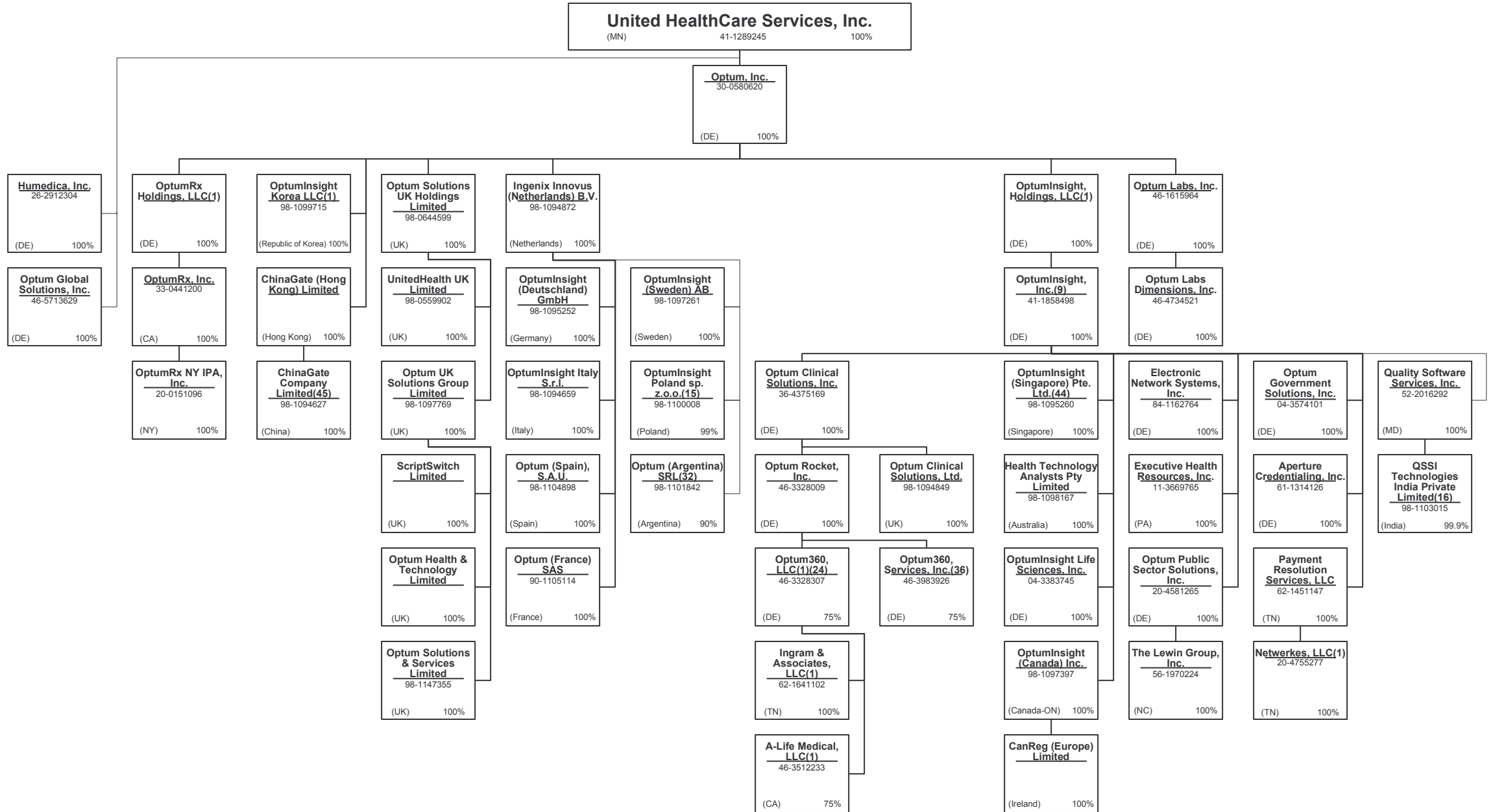
SCHEDULE Y - INFORMATION CONCERNING ACTIVITIES OF INSURER MEMBERS OF A HOLDING COMPANY GROUP
PART 1 - ORGANIZATIONAL CHART



15.5

SCHEDULE Y - INFORMATION CONCERNING ACTIVITIES OF INSURER MEMBERS OF A HOLDING COMPANY GROUP

PART 1 - ORGANIZATIONAL CHART



15.6

STATEMENT AS OF JUNE 30, 2014 OF THE Unison Health Plan of the Capital Area, Inc.

SCHEDULE Y - INFORMATION CONCERNING ACTIVITIES OF INSURER MEMBERS OF A HOLDING COMPANY GROUP

PART 1 - ORGANIZATIONAL CHART

Notes

All legal entities on the Organization Chart are Corporations unless otherwise indicated.

- (1) Entity is a Limited Liability Company
- (2) Entity is a Partnership
- (3) Entity is a Non-Profit Corporation
- (4) Control of the Foundation is based on sole membership, not the ownership of voting securities
- (5) Monarch Financial Services, LLC is 85% owned by Monarch Management Services, Inc. and 15% owned by external shareholders.
- (6) UnitedHealth Group Information Services Private Limited is 99.37% owned by UnitedHealth Group International B.V. The remaining 0.63% is owned by UnitedHealth International, Inc.
- (7) United Healthcare India Private Limited is 99.9935% owned by UnitedHealthcare International II B.V. and 0.0048% owned by UnitedHealth International, Inc.
- (8) General partnership interests are held by United HealthCare Services, Inc. (89.77%) and by UnitedHealthcare, Inc. (10.23%). United HealthCare Services, Inc. also holds 100% of the limited partnership interests. When combining general and limited partner interests, United HealthCare Services, Inc. owns 94.18% and UnitedHealthcare, Inc. owns 5.83%.
- (9) Branch office located in Abu Dhabi, UAE.
- (10) WellMed Medical Management, Inc. is 80% owned by Collaborative Care Holdings, LLC and 20% owned by WMG Healthcare Partners, L.P.
- (11) Seisa Serviços Integrados de Saúde Ltda is 99.99999% owned by Amil Assistência Médica Internacional S.A. and 0.000001% owned by Dental Center Serviços Odontológicos Ltda.
- (12) Personal Performance Consultants India Private Limited is 99.996% owned by OptumHealth International B.V. and 0.004 % owned by United Behavioral Health.
- (13) INSPIRIS of Texas Physicians Group is a Texas non-profit (taxable) whose sole member is Inspiris Services Company.
- (14) PrimeCare of Citrus Valley, Inc. is 80% owned by PrimeCare Medical Network, Inc. and 20% owned by Citrus Valley Medical Associates, Inc.
- (15) OptumInsight Poland sp. z.o.o. is 99% owned by Ingenix Innovus (Netherlands) B.V. The remaining 1% is owned by OptumInsight, Inc.
- (16) QSSI Technologies India Private Limited is 99.9% owned by Quality Software Services, Inc. and 0.1% owned by an Indian citizen.
- (17) Amico Saúde Ltda. is 99.99% owned by Amil Assistência Médica Internacional S.A. and the remaining percentage is owned by and officer of Amil.

- (18) Esho – Empresa de Serviços Hospitalares S.A is 96% owned by Amil Assistência Médica Internacional S.A.; 2.54% owned by Amico Saúde Ltda.; 0.011477% owned by Treasury Shares and 1.44% owned by external shareholders.
- (19) Etho – Empresa de Tecnologia Hospitalar Ltda. 50.01% owned by Amil Assistência Médica Internacional S.A. and 49.99% owned by an external shareholder.
- (20) Orthology, Inc. is 80% owned by UnitedHealth Group Ventures, LLC and 20% owned by external shareholders.
- (21) Excellion Serviços Biomédicos S.A. is 99.98% owned by Esho – Empresa de Serviços Hospitalares S.A. and 0.02% owned by external shareholders.
- (22) Branch offices in Iraq and Uganda.
- (23) Cemed Care Empresa de Atendimento Clínico Geral Ltda. Is 97.64% owned by Amil Assistência Médica Internacional S.A., 2.36% owned by Amico Saúde Ltd. and 0.000001% owned by an officer of Amil.
- (24) Optum 360, LLC is 75% owned by Optum Rocket, Inc. and 25% owned by an external interest holder.
- (25) Optum Health & Technology Serviços Do Brasil Ltda. is 99% owned by OptumHealth International B.V. and 1 % owned by OptumInsight, Inc.
- (26) Bosque Medical Center S.A. is 71.03% owned by Amil Assistência Médica Internacional S.A.; 23.37% owned by Amico Saúde Ltd. and 5.60% owned by Esho – Empresa de Serviços Hospitalares S.A.
- (27) AHJV, Inc. is 75% owned by NAMM Holdings, Inc. and 25% owned by Humana, Inc.
- (28) Entity is majority-owned by UHG or one of its affiliates. Corporate secretarial services for this entity are the responsibility of the portfolio company.
- (29) Promarket Propaganda e Marketing Ltda. is 99.79% owned by Amil Assistência Médica Internacional S.A. and 0.21% owned by Amico Saúde Ltd.
- (30) Amil Clinical Research Participações Ltda. is 99.95% owned by Amil Lifesciences Participações Ltda. and .05% owned by an officer of Amil.
- (31) Imed Star Serviços de Desempenho Organizacional Ltda. is 99.92% owned by Amil Assistência Médica Internacional S.A. and 0.08% owned by Amico Saúde Ltd.
- (32) Optum Argentina is 90% owned by Ingenix Innovus (Netherlands) BV and 10% owned by Optum UK Solutions Group Limited.
- (33) Hospital Alvorada Taguatinga Ltda. Is 99.99% owned by Amil Assistência Médica Internacional S.A. and 0.000001% owned by an officer of Amil.
- (34) Amil Lifesciences Participações Ltda. Is 99.99928% owned by Amil Assistência Médica Internacional S.A. and 0.00072% owned by an officer of Amil.
- (35) FrontierMedex Kenya Limited is 99.9% owned by FrontierMEDEX Limited and 0.1% owned by UnitedHealthcare International I B.V.

- (36) Optum360 Services, Inc. is 75% owned by Optum Rocket, Inc. and 25% owned by an external interest holder.
- (37) The limited partners of UnitedHealth Group International, L.P. include FMG Holdings, LLC (14.929%), Hygeia Corporation (DE) (0.203%) and UnitedHealth Group Incorporated (84.868%). UnitedHealth Group International GP is the general partner of UnitedHealth Group International, L.P.
- (38) Polar II Fundo de Investimento em Participações is a Brazilian private equity investment fund incorporated in the form of a closed-end condominium.
- (39) UnitedHealthcare International I, B.V. is 75.76% owned by UnitedHealth Group International L.P. and 24.24% owned by UnitedHealth Group International B.V.
- (40) Amil Assistência Médica Internacional S.A. is 90.23% owned by Polar II Fundo de Investimento em Participações and the remaining 9.77% is owned by the former controlling shareholders of Amil Assistência Médica Internacional S.A.
- (41) HPP A.C.E. is 70% owned by HPP - Hospitais Privados de Portugal, SGPS, S.A. The remaining 30% is owned by (1) HPP Boavista, S.A., (2) HPP Lusiadas, S.A., (3) HPP Algarve, S.A., (4) HPP Saúde - Parcerias Cascais, S.A., and (5) HPP Viseu, S.A.; each owning 6%.
- (42) HPP Viseu, S.A. is 65% owned by HPP - Hospitais Privados de Portugal, SGPS, S.A.. The remaining 35% is jointly owned VISABEIRA Saúde - Serviços de Saúde, S.A., VISABEIRA Participações Financeiras, SGPS, S.A., VISABEIRA Investimentos Financeiros SGPS, S.A. and Ciclorama - Estudos, Projectos e Produções, Lda.
- (43) Frontier Medex Tanzania Limited is 99% owned by FrontierMEDEX Limited. The remaining 1% is owned by an officer of FrontierMEDEX Limited.
- (44) Branch office located in Taiwan
- (45) Liaison office located in Beijing.
- (46) Branch office located in Hong Kong.
- (47) Representative office in Beijing
- (48) The remaining 26% is owned by internal and external investors.
- (49) Branch office located in Hong Kong.
- (50) Dental Center Serviços Odontológicos Ltda. is 65.278% owned by Seisa Serviços Integrados de Saúde Ltda. and 34.72% owned by Amil Assistência Médica Internacional S.A.
- (51) Hospital AMA S.A. is 45% owned by Esho Empresas de Serviços Hospitalares S.A. and 55% owned by Seisa Serviços Integrados de Saúde Ltda.
- (52) WESTMED Practice Partners LLC is 86% owned by Collaborative Care Holdings, LLC and 14% owned by external shareholders.

STATEMENT AS OF JUNE 30, 2014 OF THE Unison Health Plan of the Capital Area, Inc.

SCHEDULE Y
PART 1A - DETAIL OF INSURANCE HOLDING COMPANY SYSTEM

1	2	3	4	5	6	7	8	9	10	11	12	13	14	15
Group Code	Group Name	NAIC Company Code	Federal ID Number	Federal RSSD	CIK	Name of Securities Exchange if Publicly Traded (U.S. or International)	Names of Parent, Subsidiaries Or Affiliates	Domiciliary Location	Relationship to Reporting Entity	Directly Controlled by (Name of Entity/Person)	Type of Control (Ownership, Board, Management, Attorney-in-Fact, Influence, Other)	If Control is Ownership Provide Percentage	Ultimate Controlling Entity(ies)/Person(s)	*
		.0000	27-2624551				310 Canyon Medical, LLC	CA	NIA	Monarch Management Services, Inc.	Ownership	100.000	UnitedHealth Group Incorporated	
		.0000	41-1913523				ACN Group IPA of New York, Inc.	NY	NIA	OptumHealth Care Solutions, Inc.	Ownership	100.000	UnitedHealth Group Incorporated	
		.0000	27-0015861				ACN Group of California, Inc.	CA	IA	OptumHealth Care Solutions, Inc.	Ownership	100.000	UnitedHealth Group Incorporated	
		.0000	38-3849068				AHJV MSO, Inc.	DE	NIA	AHJV, Inc.	Ownership	100.000	UnitedHealth Group Incorporated	
		.0000	38-3849066				AHJV, Inc.	CA	NIA	NAMM Holdings, Inc.	Ownership	75.000	UnitedHealth Group Incorporated	2
		.0000	46-3512233				A-Life Medical, LLC	CA	NIA	Optum360, LLC	Ownership	100.000	UnitedHealth Group Incorporated	
.0707	UnitedHealth Group Incorporated	82406	35-1665915				All Savers Insurance Company	IN	IA	Golden Rule Financial Corporation	Ownership	100.000	UnitedHealth Group Incorporated	
							All Savers Life Insurance Company of California	CA	IA	Golden Rule Financial Corporation	Ownership	100.000	UnitedHealth Group Incorporated	
.0707	UnitedHealth Group Incorporated	73130	35-1744596				AmeriChoice Corporation	DE	UIP	UnitedHealth Group Incorporated	Ownership	100.000	UnitedHealth Group Incorporated	
		.0000	54-1743136				AmeriChoice Health Services, Inc.	DE	NIA	AmeriChoice Corporation	Ownership	100.000	UnitedHealth Group Incorporated	
.0707	UnitedHealth Group Incorporated	.0000	54-1743141				AmeriChoice of Connecticut, Inc.	CT	IA	AmeriChoice Corporation	Ownership	100.000	UnitedHealth Group Incorporated	
.0707	UnitedHealth Group Incorporated	.13178	26-2481299				AmeriChoice of Georgia, Inc.	GA	IA	AmeriChoice Corporation	Ownership	100.000	UnitedHealth Group Incorporated	
.0707	UnitedHealth Group Incorporated	.13168	26-2688274				AmeriChoice of New Jersey, Inc.	NJ	IA	AmeriChoice Corporation	Ownership	100.000	UnitedHealth Group Incorporated	
.0707	UnitedHealth Group Incorporated	.95497	22-3368602								Ownership	100.000	UnitedHealth Group Incorporated	
		.0000	98-1108620				Amico Saúde Ltda.	BRA	NIA	Polar II Fundo de Investimento em Participações	Ownership	99.998	UnitedHealth Group Incorporated	3
		.0000					Amil Assistência Médica Internacional S.A.	BRA	NIA	Polar II Fundo de Investimento em Participações	Ownership	90.230	UnitedHealth Group Incorporated	4
		.0000					Amil Clinical Research Participações Ltda.	BRA	NIA		Ownership	99.950	UnitedHealth Group Incorporated	3
		.0000	98-1109085				AMIL International S.á.r.l.	LUX	NIA	Amil Assistência Médica Internacional S.A.	Ownership	100.000	UnitedHealth Group Incorporated	
		.0000	98-1110579				Amil Lifesciences Participações Ltda.	BRA	NIA	Amil Assistência Médica Internacional S.A.	Ownership	99.999	UnitedHealth Group Incorporated	3
		.0000	61-1314126				Aperture Credentialing, Inc.	DE	NIA	OptumInsight, Inc.	Ownership	100.000	UnitedHealth Group Incorporated	
		.0000	86-0813232				Arizona Physicians IPA, Inc.	AZ	IA	UnitedHealthcare, Inc.	Ownership	100.000	UnitedHealth Group Incorporated	
		.0000	90-0369702				ASI Global, LLC	TX	NIA	FrontierMEDEX, Inc.	Ownership	100.000	UnitedHealth Group Incorporated	
		.0000					Audax Health Solutions, LLC	DE	NIA	Rally Health, Inc.	Ownership	100.000	UnitedHealth Group Incorporated	
		.0000	80-0368187				Aveta Arizona, Inc.	AZ	NIA	NAMM Holdings, Inc.	Ownership	100.000	UnitedHealth Group Incorporated	
		.0000	90-0632302				Aveta Health Solutions Inc.	DE	NIA	NAMM Holdings, Inc.	Ownership	100.000	UnitedHealth Group Incorporated	
		.0000	20-4057813				Aveta Inc.	DE	NIA	Collaborative Care Holdings, LLC	Ownership	100.000	UnitedHealth Group Incorporated	
		.0000	27-2823524				Aveta Kansas City, Inc.	KS	NIA	NAMM Holdings, Inc.	Ownership	100.000	UnitedHealth Group Incorporated	
		.0000	36-4704309				Aveta Tennessee, Inc	DE	NIA	NAMM Holdings, Inc.	Ownership	100.000	UnitedHealth Group Incorporated	
		.0000	84-1544013				bConnected Software, Inc.	DE	NIA	Connexions, Inc.	Ownership	100.000	UnitedHealth Group Incorporated	
		.0000	88-0267857				Behavioral Healthcare Options, Inc.	NV	NIA	Sierra Health Services, Inc.	Ownership	100.000	UnitedHealth Group Incorporated	
		.0000	98-1112673				Bosque Medical Center S.A.	BRA	NIA	Amil Assistência Médica Internacional S.A.	Ownership	71.030	UnitedHealth Group Incorporated	
		.0000	98-1112673				Bosque Medical Center S.A.	BRA	NIA	Amico Saúde Ltda.	Ownership	23.370	UnitedHealth Group Incorporated	
		.0000	98-1112673				Bosque Medical Center S.A.	BRA	NIA	Esho - Empresa de Serviços Hospitalares S.A.	Ownership	5.600	UnitedHealth Group Incorporated	
		.0000					CanReg (Europe) Limited	JRL	NIA	OptumInsight (Canada) Inc.	Ownership	100.000	UnitedHealth Group Incorporated	
		.0000					Care Improvement Plus Group Management, LLC	MD	NIA	XLHealth Corporation	Ownership	100.000	UnitedHealth Group Incorporated	
.0707	UnitedHealth Group Incorporated	12313	20-2412936				Care Improvement Plus of Maryland, Inc.	MD	IA	XLHealth Corporation	Ownership	100.000	UnitedHealth Group Incorporated	
		.0000					Care Improvement Plus of Texas Insurance Company	TX	IA	XLHealth Corporation	Ownership	100.000	UnitedHealth Group Incorporated	
.0707	UnitedHealth Group Incorporated	12558	45-4976934				Care Improvement Plus Practitioners, LLC	MD	NIA	XLHealth Corporation	Ownership	100.000	UnitedHealth Group Incorporated	
		.0000	27-3536376				Care Improvement Plus South Central Insurance Company	AR	IA	XLHealth Corporation	Ownership	100.000	UnitedHealth Group Incorporated	
.0707	UnitedHealth Group Incorporated	12567	20-3888112				Care Improvement Plus Wisconsin Insurance Company	WI	IA	XLHealth Corporation	Ownership	100.000	UnitedHealth Group Incorporated	
.0707	UnitedHealth Group Incorporated	14041	27-5038136								Ownership	100.000	UnitedHealth Group Incorporated	

STATEMENT AS OF JUNE 30, 2014 OF THE Unison Health Plan of the Capital Area, Inc.

SCHEDULE Y
PART 1A - DETAIL OF INSURANCE HOLDING COMPANY SYSTEM

1	2	3	4	5	6	7	8	9	10	11	12	13	14	15
Group Code	Group Name	NAIC Company Code	Federal ID Number	Federal RSSD	CIK	Name of Securities Exchange if Publicly Traded (U.S. or International)	Names of Parent, Subsidiaries Or Affiliates	Domiciliary Location	Relationship to Reporting Entity	Directly Controlled by (Name of Entity/Person)	Type of Control (Ownership, Board, Management, Attorney-in-Fact, Influence, Other)	If Control is Ownership Provide Percentage	Ultimate Controlling Entity(ies)/Person(s)	*
		.0000	20-5807941				Catalyst360, LLC	.DE	NIA	Optum Services, Inc.	Ownership	100.000	UnitedHealth Group Incorporated	
		.0000	98-1111491				Cemed Care Empresa de Atendimento Clínico Geral Ltda	.BRA	NIA	Amil Assistência Médica Internacional S.A.	Ownership	97.640	UnitedHealth Group Incorporated	3
		.0000	98-1094627				ChinaGate (Hong Kong) Limited	.HKG	NIA	Optum, Inc.	Ownership	100.000	UnitedHealth Group Incorporated	
.0707	UnitedHealth Group Incorporated	.11836	13-4247706				ChinaGate Company Limited	.CHN	NIA	ChinaGate (Hong Kong) Limited	Ownership	100.000	UnitedHealth Group Incorporated	
		.0000	13-4247706				Citrus Health Care, Inc.	.FL	IA	PHC Holdings of Florida, Inc.	Ownership	100.000	UnitedHealth Group Incorporated	
		.0000	56-2674371				Coachella Valley Physicians of PrimeCare, Inc.	.CA	NIA	PrimeCare Medical Network, Inc.	Ownership	100.000	UnitedHealth Group Incorporated	
		.0000	27-2337616				Collaborative Care Holdings, LLC	.DE	NIA	OptumHealth Holdings, LLC	Ownership	100.000	UnitedHealth Group Incorporated	
		.0000	27-2337487				Collaborative Care Services, Inc.	.DE	NIA	Collaborative Care Holdings, LLC	Ownership	100.000	UnitedHealth Group Incorporated	
		.0000	27-3470466				Collaborative Care Solutions, LLC	.DE	NIA	Collaborative Care Services, Inc.	Ownership	100.000	UnitedHealth Group Incorporated	
		.0000	11-3647007				Comfort Care Transportation, LLC	.TX	NIA	WellMed Medical Management, Inc.	Ownership	100.000	UnitedHealth Group Incorporated	
		.0000	61-1351358				Commonwealth Administrators, LLC	.KY	NIA	UMR, Inc.	Ownership	100.000	UnitedHealth Group Incorporated	
		.0000	20-1825933				Connexions HCl, LLC	.FL	NIA	Connexions, Inc.	Ownership	100.000	UnitedHealth Group Incorporated	
		.0000	59-3684411				Connexions, Inc.	.FL	NIA	OptumHealth Holdings, LLC	Ownership	100.000	UnitedHealth Group Incorporated	
		.0000	52-1811176				DBP Services of New York IPA, Inc.	.NY	NIA	Dental Benefit Providers, Inc.	Ownership	100.000	UnitedHealth Group Incorporated	
		.0000	52-1452809				Dental Benefit Providers of California, Inc.	.CA	IA	Dental Benefit Providers, Inc.	Ownership	100.000	UnitedHealth Group Incorporated	
.0707	UnitedHealth Group Incorporated	.52053	36-4008355				Dental Benefit Providers of Illinois, Inc.	.IL	IA	Dental Benefit Providers, Inc.	Ownership	100.000	UnitedHealth Group Incorporated	
		.0000	41-2014834				Dental Benefit Providers, Inc.	.DE	NIA	United HealthCare Services, Inc.	Ownership	100.000	UnitedHealth Group Incorporated	
		.0000					Dental Center Serviços Odontológicos Ltda.	.BRA	NIA	Seisa Serviços Integrados de Saúde Ltda.	Ownership	65.278	UnitedHealth Group Incorporated	2
		.0000	30-0238641				Distance Learning Network, Inc.	.DE	NIA	OptumHealth Holdings, LLC	Ownership	100.000	UnitedHealth Group Incorporated	
		.0000	80-0947972				DPCA, Inc.	.DE	NIA	UnitedHealth Group Ventures, LLC	Ownership	100.000	UnitedHealth Group Incorporated	
		.0000					Duncan Printing Services, LLC	.SC	NIA	UnitedHealthcare Insurance Company	Ownership	100.000	UnitedHealth Group Incorporated	
		.0000	84-1162764				Electronic Network Systems, Inc.	.DE	NIA	OptumInsight, Inc.	Ownership	100.000	UnitedHealth Group Incorporated	
		.0000	98-1103713				ELG FZE	.ARE	NIA	FrontierMEDEX Limited	Ownership	100.000	UnitedHealth Group Incorporated	
		.0000	98-1111172				Esho - Empresa de Serviços Hospitalares S.A.	.BRA	NIA	Amil Assistência Médica Internacional S.A.	Ownership	96.000	UnitedHealth Group Incorporated	5
		.0000	98-1111172				Esho - Empresa de Serviços Hospitalares S.A.	.BRA	NIA	Amico Saúde Ltda.	Ownership	2.540	UnitedHealth Group Incorporated	5
		.0000					Etho - Empresa de Tecnologia Hospitalar Ltda.	.BRA	NIA	S.A. Amil Assistência Médica Internacional	Ownership	50.010	UnitedHealth Group Incorporated	5
		.0000	86-0964571				Evercare Collaborative Solutions, Inc.	.DE	NIA	Ovations, Inc.	Ownership	100.000	UnitedHealth Group Incorporated	
		.0000	86-0618309				Evercare of Arizona, Inc.	.AZ	IA	Ovations, Inc.	Ownership	100.000	UnitedHealth Group Incorporated	
		.0000	98-1111239				Excellion Serviços Biomédicos S.A.	.BRA	NIA	Esho - Empresa de Serviços Hospitalares S.A.	Ownership	99.980	UnitedHealth Group Incorporated	6
		.0000	11-3669765				Executive Health Resources, Inc.	.PA	NIA	OptumInsight, Inc.	Ownership	100.000	UnitedHealth Group Incorporated	
		.0000					Exploration for Mine Clearance LLC	.JRO	NIA	FrontierMEDEX Limited	Ownership	100.000	UnitedHealth Group Incorporated	
		.0000	98-1113428				Exploration Logistics B.C. Ltd.	.CAN	NIA	FrontierMEDEX Canada Limited	Ownership	100.000	UnitedHealth Group Incorporated	
		.0000					Exploration Logistics Group for Medical Services PLC LTD	.JRO	NIA	FrontierMEDEX Limited	Ownership	100.000	UnitedHealth Group Incorporated	
		.0000	98-1101521				Family Health Care Services	.NV	NIA	Sierra Health Services, Inc.	Ownership	100.000	UnitedHealth Group Incorporated	
		.0000	88-0223385				Family Home Hospice, Inc.	.NV	NIA	Sierra Health Services, Inc.	Ownership	100.000	UnitedHealth Group Incorporated	
		.0000	88-0257036				FAMG Holdings, LLC	.DE	NIA	UnitedHealth Group Incorporated	Ownership	100.000	UnitedHealth Group Incorporated	
		.0000	35-2456267				FOR HEALTH OF ARIZONA, INC.	.AZ	NIA	For Health, Inc.	Ownership	100.000	UnitedHealth Group Incorporated	
		.0000	86-0908902				For Health, Inc.	.DE	NIA	Inspiris, Inc.	Ownership	100.000	UnitedHealth Group Incorporated	
		.0000	33-0766617				Frontier Medex Tanzania Limited	.TZA	NIA	FrontierMEDEX Limited	Ownership	99.000	UnitedHealth Group Incorporated	3
		.0000	68-0679514				FrontierMEDEX (RMS), Inc.	.DE	NIA	FMG Holdings, LLC	Ownership	100.000	UnitedHealth Group Incorporated	
		.0000	98-1103497				FrontierMEDEX Canada Holdings Ltd.	.CAN	NIA	UnitedHealthcare International I B.V.	Ownership	100.000	UnitedHealth Group Incorporated	

16.1

STATEMENT AS OF JUNE 30, 2014 OF THE Unison Health Plan of the Capital Area, Inc.

SCHEDULE Y
PART 1A - DETAIL OF INSURANCE HOLDING COMPANY SYSTEM

1	2	3	4	5	6	7	8	9	10	11	12	13	14	15
Group Code	Group Name	NAIC Company Code	Federal ID Number	Federal RSSD	CIK	Name of Securities Exchange if Publicly Traded (U.S. or International)	Names of Parent, Subsidiaries Or Affiliates	Domiciliary Location	Relationship to Reporting Entity	Directly Controlled by (Name of Entity/Person)	Type of Control (Ownership, Board, Management, Attorney-in-Fact, Influence, Other)	If Control is Ownership Provide Percentage	Ultimate Controlling Entity(ies)/Person(s)	*
		.00000	98-1104429				FrontierMEDEX Canada Limited	.CAN	.NIA	FrontierMEDEX Canada Holdings Ltd.	Ownership	100.000	UnitedHealth Group Incorporated	
		.00000	45-5339512				FrontierMEDEX Government Services, LLC	.DE	.NIA	FMG Holdings, LLC	Ownership	100.000	UnitedHealth Group Incorporated	
		.00000	98-1147103				FrontierMedex Kenya Limited	.KEN	.NIA	FrontierMEDEX Limited	Ownership	99.900	UnitedHealth Group Incorporated	
		.00000	98-1147103				FrontierMedex Kenya Limited	.KEN	.NIA	UnitedHealthcare International I B.V.	Ownership	0.100	UnitedHealth Group Incorporated	
		.00000					FrontierMEDEX Limited	.GBR	.NIA	UnitedHealthcare International I B.V.	Ownership	100.000	UnitedHealth Group Incorporated	
		.00000	33-1219808				FrontierMEDEX US, Inc.	.DE	.NIA	FMG Holdings, LLC	Ownership	100.000	UnitedHealth Group Incorporated	
		.00000	52-2230470				FrontierMEDEX, Inc.	.MN	.NIA	FrontierMEDEX US, Inc.	Ownership	100.000	UnitedHealth Group Incorporated	
		.00000	37-0855360				Golden Rule Financial Corporation	.DE	.NIA	UnitedHealth Group Incorporated	Ownership	100.000	UnitedHealth Group Incorporated	
.0707	UnitedHealth Group Incorporated	.62286	37-6028756	3057283			Golden Rule Insurance Company	.IN	.IA	Golden Rule Financial Corporation	Ownership	100.000	UnitedHealth Group Incorporated	
		.00000	98-0213198				H&W Indemnity (SPC), Ltd.	.CYM	.NIA	UnitedHealth Group Incorporated	Ownership	100.000	UnitedHealth Group Incorporated	
.0707	UnitedHealth Group Incorporated	.43893	13-3584296				Health Net Insurance of New York, Inc.	.NY	.IA	Oxford Health Plans LLC	Ownership	100.000	UnitedHealth Group Incorporated	
		.00000	98-0153069				Health Net Services (Bermuda) Ltd.	.BMU	.NIA	Oxford Health Plans LLC	Ownership	100.000	UnitedHealth Group Incorporated	
.0707	UnitedHealth Group Incorporated	.96342	88-0201035				Health Plan of Nevada, Inc.	.NV	.IA	Sierra Health Services, Inc.	Ownership	100.000	UnitedHealth Group Incorporated	
		.00000	98-1098167				Health Technology Analysts Pty Limited	.AUS	.NIA	OptumInsight, Inc.	Ownership	100.000	UnitedHealth Group Incorporated	
		.00000	95-4763349				HealthAllies, Inc.	.DE	.NIA	OptumHealth Holdings, LLC	Ownership	100.000	UnitedHealth Group Incorporated	
		.00000	20-8910978				Hospice Inspiris Holdings, Inc.	.TN	.NIA	Inspiris, Inc.	Ownership	100.000	UnitedHealth Group Incorporated	
		.00000	98-1111920				Hospital Alvorada de Taguatinga Ltda.	.BRA	.NIA	Amil Assistência Médica Internacional S.A.	Ownership	99.990	UnitedHealth Group Incorporated	3
		.00000					Hospital AMA S.A.	.BRA	.NIA	Seisa Serviços Integrados de Saúde Ltda.	Ownership	55.000	UnitedHealth Group Incorporated	
		.00000					Hospital AMA S.A.	.BRA	.NIA	Esho - Empresa de Serviços Hospitalares S.A.	Ownership	45.000	UnitedHealth Group Incorporated	
		.00000					Hospital Carlos Chagas S.A.	.BRA	.NIA	Esho - Empresa de Serviços Hospitalares S.A.	Ownership	100.000	UnitedHealth Group Incorporated	
		.00000	98-1138570				HPP - Hospitais Privados de Portugal, SGPS, S.A.	.PRT	.NIA	Amil Internacional S.á.r.l.	Ownership	100.000	UnitedHealth Group Incorporated	
		.00000	98-1139095				HPP A.C.E.	.PRT	.NIA	HPP - Hospitais Privados de Portugal, SGPS, S.A.	Ownership	70.000	UnitedHealth Group Incorporated	
		.00000	98-1139095				HPP A.C.E.	.PRT	.NIA	HPP Lusiadas, S.A.	Ownership	6.000	UnitedHealth Group Incorporated	
		.00000	98-1139095				HPP A.C.E.	.PRT	.NIA	HPP Viseu, S.A.	Ownership	6.000	UnitedHealth Group Incorporated	
		.00000	98-1139095				HPP A.C.E.	.PRT	.NIA	HPP Boavista, S.A.	Ownership	6.000	UnitedHealth Group Incorporated	
		.00000	98-1139095				HPP A.C.E.	.PRT	.NIA	HPP Saúde - Parcerias Cascais, S.A.	Ownership	6.000	UnitedHealth Group Incorporated	
		.00000	98-1139095				HPP A.C.E.	.PRT	.NIA	HPP Algarve, S.A.	Ownership	6.000	UnitedHealth Group Incorporated	
		.00000	98-1138873				HPP Algarve, S.A.	.PRT	.NIA	HPP - Hospitais Privados de Portugal, SGPS, S.A.	Ownership	100.000	UnitedHealth Group Incorporated	
		.00000	98-1138203				HPP Boavista, S.A.	.PRT	.NIA	HPP - Hospitais Privados de Portugal, SGPS, S.A.	Ownership	100.000	UnitedHealth Group Incorporated	
		.00000	98-1139089				HPP Lusiadas, S.A.	.PRT	.NIA	HPP - Hospitais Privados de Portugal, SGPS, S.A.	Ownership	100.000	UnitedHealth Group Incorporated	
		.00000	98-1137620				HPP Saúde - Parcerias Cascais, S.A.	.PRT	.NIA	HPP - Hospitais Privados de Portugal, SGPS, S.A.	Ownership	100.000	UnitedHealth Group Incorporated	
		.00000	98-1139169				HPP Viseu, S.A.	.PRT	.NIA	HPP - Hospitais Privados de Portugal, SGPS, S.A.	Ownership	65.000	UnitedHealth Group Incorporated	2
		.00000	26-2912304				Humedica, Inc.	.DE	.NIA	United HealthCare Services, Inc.	Ownership	100.000	UnitedHealth Group Incorporated	
		.00000	36-4331825				Hygeia Corporation	.DE	.NIA	UnitedHealth International, Inc.	Ownership	100.000	UnitedHealth Group Incorporated	
		.00000	98-1099968				Hygeia Corporation (Ontario)	.CAN	.NIA	UnitedHealth Group International L.P.	Ownership	100.000	UnitedHealth Group Incorporated	
		.00000					Imed Star - Serviços de Desempenho Organizacional Ltda.	.BRA	.NIA	Amil Assistência Médica Internacional S.A.	Ownership	99.920	UnitedHealth Group Incorporated	
		.00000					Imed Star - Serviços de Desempenho Organizacional Ltda.	.BRA	.NIA	Amico Saúde Ltda.	Ownership	0.080	UnitedHealth Group Incorporated	
		.00000	86-0477097				Information Network Corporation	.AZ	.NIA	AmeriChoice Corporation	Ownership	100.000	UnitedHealth Group Incorporated	

STATEMENT AS OF JUNE 30, 2014 OF THE Unison Health Plan of the Capital Area, Inc.

SCHEDULE Y
PART 1A - DETAIL OF INSURANCE HOLDING COMPANY SYSTEM

1	2	3	4	5	6	7	8	9	10	11	12	13	14	15
Group Code	Group Name	NAIC Company Code	Federal ID Number	Federal RSSD	CIK	Name of Securities Exchange if Publicly Traded (U.S. or International)	Names of Parent, Subsidiaries Or Affiliates	Domiciliary Location	Relationship to Reporting Entity	Directly Controlled by (Name of Entity/Person)	Type of Control (Ownership, Board, Management, Attorney-in-Fact, Influence, Other)	If Control is Ownership Provide Percentage	Ultimate Controlling Entity(ies)/Person(s)	*
		.00000	98-1094872				Ingenix Innovus (Netherlands) B.V.	NLD	NIA	Optum, Inc.	Ownership	100.000	UnitedHealth Group Incorporated	
		.00000	62-1641102				Ingram & Associates, LLC	TN	NIA	Optum360, LLC	Ownership	100.000	UnitedHealth Group Incorporated	
		.00000	13-4138668				INSPIRIS of New York IPA, Inc.	NY	NIA	Inspiris, Inc.	Ownership	100.000	UnitedHealth Group Incorporated	
		.00000	13-4138665				INSPIRIS of New York Management, Inc.	NY	NIA	Inspiris, Inc.	Ownership	100.000	UnitedHealth Group Incorporated	
		.00000	20-5355196				Inspiris of Tennessee, Inc.	TN	NIA	Inspiris, Inc.	Ownership	100.000	UnitedHealth Group Incorporated	
		.00000	26-2885572				INSPIRIS of Texas Physician Group	TX	NIA	Inspiris Services Company	Ownership	100.000	UnitedHealth Group Incorporated	
		.00000	26-0683057				Inspiris Services Company	TN	NIA	Inspiris, Inc.	Ownership	100.000	UnitedHealth Group Incorporated	
		.00000	33-0766366				Inspiris, Inc.	DE	NIA	Collaborative Care Holdings, LLC	Ownership	100.000	UnitedHealth Group Incorporated	
		.00000	98-1097022				International Psychological Services Pty Limited	AUS	NIA	Optum Health & Technology (Australia) Pty Ltd	Ownership	100.000	UnitedHealth Group Incorporated	
		.00000					ISO Hospital Dia S.A.	BRA	NIA	Perdicaris Participações Ltda.	Ownership	100.000	UnitedHealth Group Incorporated	
		.00000	32-0409538				Lifeprint Accountable Care Organization, LLC	DE	NIA	Collaborative Care Holdings, LLC	Ownership	100.000	UnitedHealth Group Incorporated	
		.00000	45-3143218				Lifeprint East, Inc.	DE	NIA	Collaborative Care Holdings, LLC	Ownership	100.000	UnitedHealth Group Incorporated	
		.00000	27-2309024				LifePrint Health, Inc.	DE	NIA	Collaborative Care Holdings, LLC	Ownership	100.000	UnitedHealth Group Incorporated	
		.00000	39-1974851				Logistics Health, Inc.	WI	NIA	OptumHealth Holdings, LLC	Ownership	100.000	UnitedHealth Group Incorporated	
		.00000	52-2129787				MAMSI Insurance Resources, LLC	MD	NIA	OneNet PPO, LLC	Ownership	100.000	UnitedHealth Group Incorporated	
.0707	UnitedHealth Group Incorporated	.60321	52-1803283				MAMSI Life and Health Insurance Company	MD	IA	United HealthCare Services, Inc.	Ownership	100.000	UnitedHealth Group Incorporated	
		.00000	14-1782475				Managed Physical Network, Inc.	NY	NIA	OptumHealth Care Solutions, Inc.	Ownership	100.000	UnitedHealth Group Incorporated	
		.00000	42-1741594				MD Ops, Inc.	CA	NIA	North American Medical Management California, Inc.	Ownership	100.000	UnitedHealth Group Incorporated	
.0707	UnitedHealth Group Incorporated	.96310	52-1169135				MD-Individual Practice Association, Inc.	MD	IA	United HealthCare Services, Inc.	Ownership	100.000	UnitedHealth Group Incorporated	
		.00000	52-2178531				MEDEX Insurance Services, Inc.	MD	NIA	FrontierMEDEX, Inc.	Ownership	100.000	UnitedHealth Group Incorporated	
.0707	UnitedHealth Group Incorporated	.12756	20-3391186				Medica Health Plans of Florida, Inc.	FL	IA	United HealthCare Services, Inc.	Ownership	100.000	UnitedHealth Group Incorporated	
.0707	UnitedHealth Group Incorporated	.12155	01-0788576				Medica HealthCare Plans, Inc.	FL	IA	United HealthCare Services, Inc.	Ownership	100.000	UnitedHealth Group Incorporated	
		.00000	26-4808018				Medical Preparatory School of Allied Health, LLC	TX	NIA	WellMed Medical Management, Inc.	Ownership	100.000	UnitedHealth Group Incorporated	
		.00000	32-0037402				Medical Transportation Services, LLC	FL	NIA	United HealthCare Services, Inc.	Ownership	100.000	UnitedHealth Group Incorporated	
		.00000	27-2252446				MHC Real Estate Holdings, LLC	CA	NIA	Monarch Management Services, Inc.	Ownership	100.000	UnitedHealth Group Incorporated	
.0707	UnitedHealth Group Incorporated	.79480	35-1279304				Midwest Security Life Insurance Company	WI	IA	UnitedHealthcare, Inc.	Ownership	100.000	UnitedHealth Group Incorporated	
		.00000	46-2881462				Minnesota Waypoint Physical Therapy, Inc.	DE	NIA	Orthology, Inc.	Ownership	100.000	UnitedHealth Group Incorporated	
		.00000	46-3949765				MN Waypoint Sports Physical Therapy, Inc.	DE	NIA	Orthology, Inc.	Ownership	100.000	UnitedHealth Group Incorporated	
		.00000	27-1799346				Monarch Financial Services, LLC	CA	NIA	Monarch Management Services, Inc.	Ownership	100.000	UnitedHealth Group Incorporated	
		.00000	45-3142852				Monarch Management Services, Inc.	DE	NIA	Collaborative Care Holdings, LLC	Ownership	100.000	UnitedHealth Group Incorporated	
		.00000	20-3236839				NAAM Holdings, Inc.	DE	NIA	Aveta Inc.	Ownership	100.000	UnitedHealth Group Incorporated	
.0707	UnitedHealth Group Incorporated	.95251	76-0196559				National Pacific Dental, Inc.	TX	IA	Dental Benefit Providers, Inc.	Ownership	100.000	UnitedHealth Group Incorporated	
.0707	UnitedHealth Group Incorporated	.95123	65-0996107				Neighborhood Health Partnership, Inc.	FL	IA	UnitedHealthcare, Inc.	Ownership	100.000	UnitedHealth Group Incorporated	
		.00000	20-4755277				Netwerkes, LLC	TN	NIA	Payment Resolution Services, LLC	Ownership	100.000	UnitedHealth Group Incorporated	
		.00000	46-3584152				Nevada Medical Services LLC	NV	NIA	Collaborative Care Services, Inc.	Ownership	100.000	UnitedHealth Group Incorporated	
.0707	UnitedHealth Group Incorporated	.95758	88-0228572				Nevada Pacific Dental	NV	IA	Dental Benefit Providers, Inc.	Ownership	100.000	UnitedHealth Group Incorporated	
		.00000	36-3984647				North American Medical Management - Illinois, Inc.	IL	NIA	NAAM Holdings, Inc.	Ownership	100.000	UnitedHealth Group Incorporated	
		.00000	33-0673955				North American Medical Management California, Inc.	TN	NIA	NAAM Holdings, Inc.	Ownership	100.000	UnitedHealth Group Incorporated	
		.00000	88-0245121				Northern Nevada Health Network, Inc.	NV	NIA	Sierra Health Services, Inc.	Ownership	100.000	UnitedHealth Group Incorporated	
		.00000	52-2129786				OneNet PPO, LLC	MD	NIA	UnitedHealthcare Insurance Company	Ownership	100.000	UnitedHealth Group Incorporated	
.0707	UnitedHealth Group Incorporated	.96940	52-1518174				Optimum Choice, Inc.	MD	IA	United HealthCare Services, Inc.	Ownership	100.000	UnitedHealth Group Incorporated	
		.00000	98-1101842				Optum (Argentina) SRL	ARG	NIA	Ingenix Innovus (Netherlands) B.V.	Ownership	90.000	UnitedHealth Group Incorporated	
		.00000	98-1101842				Optum (Argentina) SRL	ARG	NIA	Optum UK Solutions Group Limited	Ownership	10.000	UnitedHealth Group Incorporated	
		.00000	90-1105114				Optum (France) SAS	FRA	NIA	Ingenix Innovus (Netherlands) B.V.	Ownership	100.000	UnitedHealth Group Incorporated	
		.00000	98-1104898				Optum (Spain), S.A.U.	ESP	NIA	Ingenix Innovus (Netherlands) B.V.	Ownership	100.000	UnitedHealth Group Incorporated	

STATEMENT AS OF JUNE 30, 2014 OF THE Unison Health Plan of the Capital Area, Inc.

SCHEDULE Y
PART 1A - DETAIL OF INSURANCE HOLDING COMPANY SYSTEM

1	2	3	4	5	6	7	8	9	10	11	12	13	14	15
Group Code	Group Name	NAIC Company Code	Federal ID Number	Federal RSSD	CIK	Name of Securities Exchange if Publicly Traded (U.S. or International)	Names of Parent, Subsidiaries Or Affiliates	Domiciliary Location	Relationship to Reporting Entity	Directly Controlled by (Name of Entity/Person)	Type of Control (Ownership, Board, Management, Attorney-in-Fact, Influence, Other)	If Control is Ownership Provide Percentage	Ultimate Controlling Entity(ies)/Person(s)	*
		.00000	47-0858534	3202702			Optum Bank, Inc.	.UT	NIA	OptumHealth Financial Services, Inc.	Ownership	100.000	UnitedHealth Group Incorporated	
		.00000	36-3437660				Optum Biometrics, Inc.	.IL	NIA	OptumHealth Care Solutions, Inc.	Ownership	100.000	UnitedHealth Group Incorporated	
		.00000	45-3142512				Optum Clinical Services, Inc.	.DE	NIA	Collaborative Care Holdings, LLC	Ownership	100.000	UnitedHealth Group Incorporated	
		.00000	36-4375169	3886791			Optum Clinical Solutions, Inc.	.DE	NIA	OptumInsight, Inc.	Ownership	100.000	UnitedHealth Group Incorporated	
		.00000	98-1094849				Optum Clinical Solutions, Ltd.	.GBR	NIA	Optum Clinical Solutions, Inc.	Ownership	100.000	UnitedHealth Group Incorporated	
		.00000	46-5713629				Optum Global Solutions, Inc.	.DE	NIA	United HealthCare Services, Inc.	Ownership	100.000	UnitedHealth Group Incorporated	
		.00000	04-3574101				Optum Government Solutions, Inc.	.DE	NIA	OptumInsight, Inc.	Ownership	100.000	UnitedHealth Group Incorporated	
		.00000					Optum Health & Technology (Australia) Pty Ltd	.AUS	NIA	Optum Health & Technology (UK) Limited	Ownership	100.000	UnitedHealth Group Incorporated	
		.00000					Optum Health & Technology (Singapore) Pte. Ltd.	.SGP	NIA	OptumHealth International B.V.	Ownership	100.000	UnitedHealth Group Incorporated	
		.00000	98-1095879				Optum Health & Technology (UK) Limited	.GBR	NIA	Optum Health & Technology Holdings (US), LLC	Ownership	100.000	UnitedHealth Group Incorporated	
		.00000	20-2149493				Optum Health & Technology (US), LLC	.MO	NIA	United Behavioral Health	Ownership	100.000	UnitedHealth Group Incorporated	
		.00000	43-1747235				Optum Health & Technology Holdings (US), LLC	.MO	NIA	Optum, Inc.	Ownership	100.000	UnitedHealth Group Incorporated	
		.00000					Optum Health & Technology Limited	.GBR	NIA	Optum UK Solutions Group Limited	Ownership	100.000	UnitedHealth Group Incorporated	
		.00000					Optum Health & Technology Serviços Do Brasil Ltda.	.BRA	NIA	OptumHealth International B.V.	Ownership	99.000	UnitedHealth Group Incorporated	
		.00000					Optum Health & Technology Serviços Do Brasil Ltda.	.BRA	NIA	OptumInsight, Inc.	Ownership	1.000	UnitedHealth Group Incorporated	
		.00000	98-1097921				Optum Health Services (Canada) Ltd.	.CAN	NIA	Optum Health & Technology Holdings (US), LLC	Ownership	100.000	UnitedHealth Group Incorporated	
		.00000	46-4734521				Optum Labs Dimensions, Inc.	.DE	NIA	Optum Labs, Inc.	Ownership	100.000	UnitedHealth Group Incorporated	
		.00000	46-1615964				Optum Labs, Inc.	.DE	NIA	Optum, Inc.	Ownership	100.000	UnitedHealth Group Incorporated	
		.00000	90-1001805				Optum Nevada Accountable Care Organization LLC	.DE	NIA	Collaborative Care Holdings, LLC	Ownership	100.000	UnitedHealth Group Incorporated	
		.00000	20-8911466				Optum Palliative and Hospice Care of Pennsylvania, Inc.	.TN	NIA	Hospice Inspiris Holdings, Inc.	Ownership	100.000	UnitedHealth Group Incorporated	
		.00000	20-8911303				Optum Palliative and Hospice Care of Texas, Inc.	.TN	NIA	Hospice Inspiris Holdings, Inc.	Ownership	100.000	UnitedHealth Group Incorporated	
		.00000	30-0226127				Optum Palliative and Hospice Care, Inc.	.DE	NIA	Collaborative Care Holdings, LLC	Ownership	100.000	UnitedHealth Group Incorporated	
		.00000	20-4581265				Optum Public Sector Solutions, Inc.	.DE	NIA	OptumInsight, Inc.	Ownership	100.000	UnitedHealth Group Incorporated	
		.00000	46-3328009				Optum Rocket, Inc.	.DE	NIA	Optum Clinical Solutions, Inc.	Ownership	100.000	UnitedHealth Group Incorporated	
		.00000	45-4683454				Optum Services, Inc.	.DE	NIA	Optum, Inc.	Ownership	100.000	UnitedHealth Group Incorporated	
		.00000	98-1147355				Optum Solutions & Services Limited	.GBR	NIA	Optum UK Solutions Group Limited	Ownership	100.000	UnitedHealth Group Incorporated	
		.00000	98-0644599				Optum Solutions UK Holdings Limited	.GBR	NIA	Optum, Inc.	Ownership	100.000	UnitedHealth Group Incorporated	
		.00000	98-1097769				Optum UK Solutions Group Limited	.GBR	NIA	Optum Solutions UK Holdings Limited	Ownership	100.000	UnitedHealth Group Incorporated	
		.00000	30-0580620	3119994			Optum, Inc.	.DE	NIA	United HealthCare Services, Inc.	Ownership	100.000	UnitedHealth Group Incorporated	
		.00000	46-3983926				Optum360 Services, Inc.	.DE	NIA	Optum Rocket, Inc.	Ownership	75.000	UnitedHealth Group Incorporated	6
		.00000	46-3328307				Optum360, LLC	.DE	NIA	Optum Rocket, Inc.	Ownership	75.000	UnitedHealth Group Incorporated	6
		.00000	41-1591944				OptumHealth Care Solutions, Inc.	.MN	NIA	OptumHealth Holdings, LLC	Ownership	100.000	UnitedHealth Group Incorporated	
		.00000	47-0858530				OptumHealth Financial Services, Inc.	.DE	NIA	OptumHealth Holdings, LLC	Ownership	100.000	UnitedHealth Group Incorporated	
		.00000	47-1192395				OptumHealth Holdings, LLC	.DE	NIA	Optum, Inc.	Ownership	100.000	UnitedHealth Group Incorporated	
		.00000	98-1106868				OptumHealth International B.V.	.NLD	NIA	Optum, Inc.	Ownership	100.000	UnitedHealth Group Incorporated	
		.00000	98-1097397				OptumInsight (Canada) Inc.	.CAN	NIA	OptumInsight, Inc.	Ownership	100.000	UnitedHealth Group Incorporated	
		.00000	98-1095252				OptumInsight (Deutschland) GmbH	.DEU	NIA	Ingenix Innovus (Netherlands) B.V.	Ownership	100.000	UnitedHealth Group Incorporated	
		.00000	98-1095260				OptumInsight (Singapore) Pte. Ltd.	.SGP	NIA	OptumInsight, Inc.	Ownership	100.000	UnitedHealth Group Incorporated	
		.00000	98-1097261				OptumInsight (Sweden) AB	.SWE	NIA	Ingenix Innovus (Netherlands) B.V.	Ownership	100.000	UnitedHealth Group Incorporated	
		.00000					OptumInsight Holdings, LLC	.DE	NIA	Optum, Inc.	Ownership	100.000	UnitedHealth Group Incorporated	
		.00000	98-1094659				OptumInsight Italy S.r.l.	.ITA	NIA	Ingenix Innovus (Netherlands) B.V.	Ownership	100.000	UnitedHealth Group Incorporated	

STATEMENT AS OF JUNE 30, 2014 OF THE Unison Health Plan of the Capital Area, Inc.

SCHEDULE Y
PART 1A - DETAIL OF INSURANCE HOLDING COMPANY SYSTEM

1	2	3	4	5	6	7	8	9	10	11	12	13	14	15
Group Code	Group Name	NAIC Company Code	Federal ID Number	Federal RSSD	CIK	Name of Securities Exchange if Publicly Traded (U.S. or International)	Names of Parent, Subsidiaries Or Affiliates	Domiciliary Location	Relationship to Reporting Entity	Directly Controlled by (Name of Entity/Person)	Type of Control (Ownership, Board, Management, Attorney-in-Fact, Influence, Other)	If Control is Ownership Provide Percentage	Ultimate Controlling Entity(ies)/Person(s)	*
		.00000	98-1099715				OptumInsight Korea LLC	.KOR	.NIA	Optum, Inc.	Ownership	100.000	UnitedHealth Group Incorporated	
		.00000	04-3383745				OptumInsight Life Sciences, Inc.	.DE	.NIA	OptumInsight, Inc.	Ownership	100.000	UnitedHealth Group Incorporated	
		.00000	98-1100008				OptumInsight Poland sp. z.o.o.	.POL	.NIA	Ingenix Innovus (Netherlands) B.V.	Ownership	99.000	UnitedHealth Group Incorporated	
		.00000	98-1100008				OptumInsight Poland sp. z.o.o.	.POL	.NIA	OptumInsight, Inc.	Ownership	1.000	UnitedHealth Group Incorporated	
		.00000	41-1858498				OptumInsight, Inc.	.DE	.NIA	OptumInsight Holdings, LLC	Ownership	100.000	UnitedHealth Group Incorporated	
		.00000					OptumRx Holdings, LLC	.DE	.NIA	Optum, Inc.	Ownership	100.000	UnitedHealth Group Incorporated	
		.00000	20-0151096				OptumRx NY IPA, Inc.	.NY	.NIA	OptumRx, Inc.	Ownership	100.000	UnitedHealth Group Incorporated	
		.00000	33-0441200				OptumRx, Inc.	.CA	.NIA	OptumRx Holdings, LLC	Ownership	100.000	UnitedHealth Group Incorporated	
		.00000	41-1921007				Ovations, Inc.	.DE	.NIA	United HealthCare Services, Inc.	Ownership	100.000	UnitedHealth Group Incorporated	
		.00000	06-1587795				Oxford Benefit Management, Inc.	.CT	.NIA	Oxford Health Plans LLC	Ownership	100.000	UnitedHealth Group Incorporated	
.0707	UnitedHealth Group Incorporated	.78026	22-2797560				Oxford Health Insurance, Inc.	.NY	.IA	UnitedHealthcare Insurance Company	Ownership	100.000	UnitedHealth Group Incorporated	
.0707	UnitedHealth Group Incorporated	.96798	06-1181201				Oxford Health Plans (CT), Inc.	.CT	.IA	Oxford Health Plans LLC	Ownership	100.000	UnitedHealth Group Incorporated	
.0707	UnitedHealth Group Incorporated	.95506	22-2745725				Oxford Health Plans (NJ), Inc.	.NJ	.IA	Oxford Health Plans LLC	Ownership	100.000	UnitedHealth Group Incorporated	
.0707	UnitedHealth Group Incorporated	.95479	06-1181200				Oxford Health Plans (NY), Inc.	.NY	.IA	Oxford Health Plans LLC	Ownership	100.000	UnitedHealth Group Incorporated	
		.00000	52-2443751				Oxford Health Plans LLC	.DE	.NIA	UnitedHealth Group Incorporated	Ownership	100.000	UnitedHealth Group Incorporated	
.0707	UnitedHealth Group Incorporated	.70785	35-1137395				PacifiCare Life and Health Insurance Company	.IN	.IA	United HealthCare Services, Inc.	Ownership	100.000	UnitedHealth Group Incorporated	
.0707	UnitedHealth Group Incorporated	.84506	95-2829463				PacifiCare Life Assurance Company	.CO	.IA	United HealthCare Services, Inc.	Ownership	100.000	UnitedHealth Group Incorporated	
.0707	UnitedHealth Group Incorporated	.95617	94-3267522				PacifiCare of Arizona, Inc.	.AZ	.IA	United HealthCare Services, Inc.	Ownership	100.000	UnitedHealth Group Incorporated	
.0707	UnitedHealth Group Incorporated	.95434	84-1011378				PacifiCare of Colorado, Inc.	.CO	.IA	United HealthCare Services, Inc.	Ownership	100.000	UnitedHealth Group Incorporated	
.0707	UnitedHealth Group Incorporated	.95685	86-0875231				PacifiCare of Nevada, Inc.	.NV	.IA	United HealthCare Services, Inc.	Ownership	100.000	UnitedHealth Group Incorporated	
		.00000	62-1451147				Payment Resolution Services, LLC	.TN	.NIA	OptumInsight, Inc.	Ownership	100.000	UnitedHealth Group Incorporated	
		.00000	75-3265056				PCCCV, Inc.	.CA	.NIA	PrimeCare Medical Network, Inc.	Ownership	100.000	UnitedHealth Group Incorporated	
		.00000					Perdicaris Participações Ltda.	.BRA	.NIA	Esho - Empresa de Serviços Hospitalares S.A.	Ownership	100.000	UnitedHealth Group Incorporated	
		.00000	98-1095799				Personal Performance Consultants India Private Limited	.IND	.NIA	OptumHealth International B.V.	Ownership	99.996	UnitedHealth Group Incorporated	1
		.00000	98-1095799				Personal Performance Consultants India Private Limited	.IND	.NIA	United Behavioral Health	Ownership	0.004	UnitedHealth Group Incorporated	1
		.00000	80-0506053				PHC Holdings of Florida, Inc.	.TX	.NIA	PHC Subsidiary Holdings, LLC	Ownership	100.000	UnitedHealth Group Incorporated	
		.00000	35-2288416				PHC Subsidiary Holdings, LLC	.TX	.NIA	United HealthCare Services, Inc.	Ownership	100.000	UnitedHealth Group Incorporated	
		.00000	80-0654665				Physician Care Partners, Inc.	.IL	.NIA	North American Medical Management - Illinois, Inc.	Ownership	100.000	UnitedHealth Group Incorporated	
.0707	UnitedHealth Group Incorporated	.11494	04-3677255				Physicians Health Choice of Texas, LLC	.TX	.IA	PHC Subsidiary Holdings, LLC	Ownership	100.000	UnitedHealth Group Incorporated	
		.00000	52-1162824				Physicians Health Plan of Maryland, Inc.	.MD	.NIA	United HealthCare Services, Inc.	Ownership	100.000	UnitedHealth Group Incorporated	
		.00000					Plus One Health Management Puerto Rico, Inc.	.PR	.NIA	Plus One Holdings, Inc.	Ownership	100.000	UnitedHealth Group Incorporated	
		.00000	13-3613705				Plus One Holdings, Inc.	.DE	.NIA	OptumHealth Care Solutions, Inc.	Ownership	100.000	UnitedHealth Group Incorporated	
		.00000	98-1083164				Polar II Fundo de Investimento em Participações	.BRA	.NIA	UnitedHealthcare International IV S.á.r.l.	Ownership	100.000	UnitedHealth Group Incorporated	
		.00000	98-1098190				Positive People Company	.CHN	.NIA	Optum Health & Technology Holdings (US), LLC	Ownership	100.000	UnitedHealth Group Incorporated	
		.00000	75-2741619				ppoONE, Inc.	.DE	.NIA	United HealthCare Services, Inc.	Ownership	100.000	UnitedHealth Group Incorporated	
		.00000	65-0683927				Preferred Care Partners Holding, Corp.	.FL	.NIA	United HealthCare Services, Inc.	Ownership	100.000	UnitedHealth Group Incorporated	
		.00000	26-1845018				Preferred Care Partners Medical Group, Inc.	.FL	.NIA	Preferred Care Partners Holding, Corp.	Ownership	100.000	UnitedHealth Group Incorporated	
		.00000	26-1845018				Preferred Care Partners Medical Group, Inc.	.FL	.NIA	Preferred Care Partners Holding, Corp.	Ownership	100.000	UnitedHealth Group Incorporated	
.0707	UnitedHealth Group Incorporated	.11176	65-0885893				Preferred Care Partners, Inc.	.FL	.IA	Preferred Care Partners Holding, Corp.	Ownership	100.000	UnitedHealth Group Incorporated	
		.00000	75-3265059				Premier Choice ACO, Inc.	.CA	.NIA	PrimeCare Medical Network, Inc.	Ownership	100.000	UnitedHealth Group Incorporated	
		.00000	88-0253112				Prime Health, Inc.	.NV	.NIA	Sierra Health Services, Inc.	Ownership	100.000	UnitedHealth Group Incorporated	

165

STATEMENT AS OF JUNE 30, 2014 OF THE Unison Health Plan of the Capital Area, Inc.

SCHEDULE Y
PART 1A - DETAIL OF INSURANCE HOLDING COMPANY SYSTEM

1	2	3	4	5	6	7	8	9	10	11	12	13	14	15
Group Code	Group Name	NAIC Company Code	Federal ID Number	Federal RSSD	CIK	Name of Securities Exchange if Publicly Traded (U.S. or International)	Names of Parent, Subsidiaries Or Affiliates	Domiciliary Location	Relationship to Reporting Entity	Directly Controlled by (Name of Entity/Person)	Type of Control (Ownership, Board, Management, Attorney-in-Fact, Influence, Other)	If Control is Ownership Provide Percentage	Ultimate Controlling Entity(ies)/Person(s)	*
		.0000	33-0607478				PrimeCare Medical Network, Inc.	CA	IA	NAIM Holdings, Inc.	Ownership	100.000	UnitedHealth Group Incorporated	
		.0000	87-0757397				PrimeCare of Citrus Valley, Inc.	CA	NIA	PrimeCare Medical Network, Inc.	Ownership	80.000	UnitedHealth Group Incorporated	2
		.0000	33-0674407				PrimeCare of Corona, Inc.	CA	NIA	PrimeCare Medical Network, Inc.	Ownership	100.000	UnitedHealth Group Incorporated	
		.0000	33-0674401				PrimeCare of Hemet Valley, Inc.	CA	NIA	PrimeCare Medical Network, Inc.	Ownership	100.000	UnitedHealth Group Incorporated	
		.0000	33-0674408				PrimeCare of Inland Valley, Inc.	CA	NIA	PrimeCare Medical Network, Inc.	Ownership	100.000	UnitedHealth Group Incorporated	
		.0000	33-0674402				PrimeCare of Moreno Valley, Inc.	CA	NIA	PrimeCare Medical Network, Inc.	Ownership	100.000	UnitedHealth Group Incorporated	
		.0000	33-0674400				PrimeCare of Redlands, Inc.	CA	NIA	PrimeCare Medical Network, Inc.	Ownership	100.000	UnitedHealth Group Incorporated	
		.0000	33-0674404				PrimeCare of Riverside, Inc.	CA	NIA	PrimeCare Medical Network, Inc.	Ownership	100.000	UnitedHealth Group Incorporated	
		.0000	14-1915328				PrimeCare of San Bernardino, Inc.	CA	NIA	PrimeCare Medical Network, Inc.	Ownership	100.000	UnitedHealth Group Incorporated	
		.0000	33-0698439				PrimeCare of Sun City, Inc.	CA	NIA	PrimeCare Medical Network, Inc.	Ownership	100.000	UnitedHealth Group Incorporated	
		.0000	33-0674409				PrimeCare of Temecula, Inc.	CA	NIA	PrimeCare Medical Network, Inc.	Ownership	100.000	UnitedHealth Group Incorporated	
		.0000	98-1112304				Promarket Propaganda e Marketing Ltda.	BRA	NIA	S.A. Amil Assistência Médica Internacional	Ownership	99.790	UnitedHealth Group Incorporated	
		.0000	98-1112304				Promarket Propaganda e Marketing Ltda.	BRA	NIA	Amico Saúde Ltda.	Ownership	0.210	UnitedHealth Group Incorporated	
		.0000	98-1103015				QSSI Technologies India Private Limited	JND	NIA	Quality Software Services, Inc.	Ownership	99.900	UnitedHealth Group Incorporated	6
		.0000	52-2016292				Quality Software Services, Inc.	MD	NIA	OptumInsight, Inc.	Ownership	100.000	UnitedHealth Group Incorporated	
		.0000	26-3168754				R&H Family Fitness Unlimited LLC	TX	NIA	WellMed Medical Management, Inc.	Ownership	100.000	UnitedHealth Group Incorporated	
		.0000	35-2493256				Rally Health, Inc.	DE	NIA	Optum Services, Inc.	Ownership	74.000	UnitedHealth Group Incorporated	6
		.0000					ScriptSwitch Limited	GBR	NIA	Optum UK Solutions Group Limited	Ownership	100.000	UnitedHealth Group Incorporated	
		.0000					Seisa Serviços Integrados de Saúde Ltda.	BRA	NIA	S.A. Amil Assistência Médica Internacional	Ownership	99.990	UnitedHealth Group Incorporated	
		.0000					Seisa Serviços Integrados de Saúde Ltda.	BRA	NIA	Dental Center Serviços Odontológicos Ltda.	Ownership	0.010	UnitedHealth Group Incorporated	
		.0000	20-4763091				Senior Care Partners, Inc.	IL	NIA	North American Medical Management - Illinois, Inc.	Ownership	100.000	UnitedHealth Group Incorporated	
.0707	UnitedHealth Group Incorporated	.71420	94-0734860				Sierra Health and Life Insurance Company, Inc.	NV	IA	Sierra Health Services, Inc.	Ownership	100.000	UnitedHealth Group Incorporated	
		.0000	88-0200415				Sierra Health Services, Inc.	NV	NIA	UnitedHealthcare, Inc.	Ownership	100.000	UnitedHealth Group Incorporated	
		.0000	88-0254322				Sierra Health-Care Options, Inc.	NV	NIA	Sierra Health Services, Inc.	Ownership	100.000	UnitedHealth Group Incorporated	
		.0000	88-0385705				Sierra Home Medical Products, Inc.	NV	NIA	Sierra Health Services, Inc.	Ownership	100.000	UnitedHealth Group Incorporated	
		.0000	88-0264562				Sierra Nevada Administrators, Inc.	NV	NIA	Sierra Health Services, Inc.	Ownership	100.000	UnitedHealth Group Incorporated	
		.0000	88-0201420				Southwest Medical Associates, Inc.	NV	NIA	Sierra Health Services, Inc.	Ownership	100.000	UnitedHealth Group Incorporated	
		.0000	38-2609888				Southwest Michigan Health Network Inc.	MI	NIA	UnitedHealthcare, Inc.	Ownership	100.000	UnitedHealth Group Incorporated	
		.0000	41-1921983				Specialty Benefits, LLC	DE	NIA	United HealthCare Services, Inc.	Ownership	100.000	UnitedHealth Group Incorporated	
		.0000	71-0886811				Spectera of New York, IPA, Inc.	NY	NIA	Spectera, Inc.	Ownership	100.000	UnitedHealth Group Incorporated	
		.0000	52-1260282				Spectera, Inc.	MD	NIA	Specialty Benefits, LLC	Ownership	100.000	UnitedHealth Group Incorporated	
		.0000	56-1970224				The Lewin Group, Inc.	NC	NIA	Optum Public Sector Solutions, Inc.	Ownership	100.000	UnitedHealth Group Incorporated	
		.0000	25-1825549				Three Rivers Holdings, Inc.	DE	UDP	AmeriChoice Corporation	Ownership	100.000	UnitedHealth Group Incorporated	
		.0000	52-1431155				Travel Express Incorporated	MD	NIA	FrontierMEDEX, Inc.	Ownership	100.000	UnitedHealth Group Incorporated	
		.0000	94-3077084				U.S. Behavioral Health Plan, California	CA	IA	United Behavioral Health	Ownership	100.000	UnitedHealth Group Incorporated	
		.0000	41-1913059				UHC International Services, Inc.	DE	NIA	UnitedHealth Group Incorporated	Ownership	100.000	UnitedHealth Group Incorporated	
		.0000	95-2931460				UHC of California	CA	IA	United HealthCare Services, Inc.	Ownership	100.000	UnitedHealth Group Incorporated	
		.0000					UHG Brasil Participações S.A.	BRA	NIA	Polar II Fundo de Investimento em Participações	Ownership	100.000	UnitedHealth Group Incorporated	
		.0000	41-1921008				UHC Holdings, Inc.	DE	NIA	United HealthCare Services, Inc.	Ownership	100.000	UnitedHealth Group Incorporated	
		.0000	14-1892398				Ultima Rx, LLC	FL	NIA	United HealthCare Services, Inc.	Ownership	100.000	UnitedHealth Group Incorporated	
		.0000	39-1995276				UMR, Inc.	DE	NIA	United HealthCare Services, Inc.	Ownership	100.000	UnitedHealth Group Incorporated	
.0707	UnitedHealth Group Incorporated	.91529	52-1996029				Unimerica Insurance Company	WI	IA	OptumHealth Holdings, LLC	Ownership	100.000	UnitedHealth Group Incorporated	
		.11596	01-0637149				Unimerica Life Insurance Company of New York	NY	IA	UnitedHealthcare Insurance Company	Ownership	100.000	UnitedHealth Group Incorporated	
		.0000	25-1877716				Unison Administrative Services, LLC	PA	NIA	Three Rivers Holdings, Inc.	Ownership	100.000	UnitedHealth Group Incorporated	

STATEMENT AS OF JUNE 30, 2014 OF THE Unison Health Plan of the Capital Area, Inc.

SCHEDULE Y
PART 1A - DETAIL OF INSURANCE HOLDING COMPANY SYSTEM

1	2	3	4	5	6	7	8	9	10	11	12	13	14	15
Group Code	Group Name	NAIC Company Code	Federal ID Number	Federal RSSD	CIK	Name of Securities Exchange if Publicly Traded (U.S. or International)	Names of Parent, Subsidiaries Or Affiliates	Domiciliary Location	Relationship to Reporting Entity	Directly Controlled by (Name of Entity/Person)	Type of Control (Ownership, Board, Management, Attorney-in-Fact, Influence, Other)	If Control is Ownership Provide Percentage	Ultimate Controlling Entity(ies)/Person(s)	*
		00000	20-5917714				Unison Health Plan of Delaware, Inc.	DE	IA	Three Rivers Holdings, Inc.	Ownership	100.000	UnitedHealth Group Incorporated	
.0707	UnitedHealth Group Incorporated	13032	26-0651931				Unison Health Plan of the Capital Area, Inc.	DC	RE	Three Rivers Holdings, Inc.	Ownership	100.000	UnitedHealth Group Incorporated	
		00000	94-2649097				United Behavioral Health	CA	NIA	OptumHealth Holdings, LLC	Ownership	100.000	UnitedHealth Group Incorporated	
		00000	41-1868911				United Behavioral Health of New York, I.P.A., Inc.	NY	NIA	United Behavioral Health	Ownership	100.000	UnitedHealth Group Incorporated	
		00000	41-1941615				United Health Foundation	MN	NIA	UnitedHealth Group Incorporated	Ownership	100.000	UnitedHealth Group Incorporated	
		00000	41-1289245	3410132			United HealthCare Services, Inc.	MN	NIA	UnitedHealth Group Incorporated	Ownership	100.000	UnitedHealth Group Incorporated	
		00000	30-0318238				United Resource Networks IPA of New York, Inc.	NY	NIA	OptumHealth Care Solutions, Inc.	Ownership	100.000	UnitedHealth Group Incorporated	
		00000	01-0538317				UnitedHealth Advisors, LLC	ME	NIA	United HealthCare Services, Inc.	Ownership	100.000	UnitedHealth Group Incorporated	
		00000	98-1097761				UnitedHealth Group Global Healthcare Services Limited	JRL	NIA	United HealthCare Services, Inc.	Ownership	100.000	UnitedHealth Group Incorporated	
		00000	98-1097776				UnitedHealth Group Global Services, Inc.	PHL	NIA	UnitedHealth Group International B.V.	Ownership	100.000	UnitedHealth Group Incorporated	
		00000	41-1321939		0000731766	New York Stock Exchange	UnitedHealth Group Incorporated	MN	UIP			0.000		
		00000	98-1093259				UnitedHealth Group Information Services Private Limited	JND	NIA	UnitedHealth Group International B.V.	Ownership	99.370	UnitedHealth Group Incorporated	
		00000	98-1093259				UnitedHealth Group Information Services Private Limited	JND	NIA	UnitedHealth International, Inc.	Ownership	0.630	UnitedHealth Group Incorporated	
		00000	98-1101083				UnitedHealth Group International B.V.	NLD	NIA	UnitedHealth Group Incorporated	Ownership	100.000	UnitedHealth Group Incorporated	
		00000	98-1079826				UnitedHealth Group International GP	CYM	NIA	UnitedHealth Group Incorporated	Ownership	100.000	UnitedHealth Group Incorporated	
		00000	98-1080118				UnitedHealth Group International L.P.	CYM	NIA	UnitedHealth Group Incorporated	Ownership	84.868	UnitedHealth Group Incorporated	7
		00000	98-1080118				UnitedHealth Group International L.P.	CYM	NIA	FMG Holdings, LLC	Ownership	14.929	UnitedHealth Group Incorporated	7
		00000	98-1080118				UnitedHealth Group International L.P.	CYM	NIA	Hygeia Corporation	Ownership	0.203	UnitedHealth Group Incorporated	7
		00000	46-3311984				UnitedHealth Group Ventures, LLC	DE	NIA	UnitedHealth Group Incorporated	Ownership	100.000	UnitedHealth Group Incorporated	
		00000	41-1917398				UnitedHealth International, Inc.	DE	NIA	UnitedHealth Group Incorporated	Ownership	100.000	UnitedHealth Group Incorporated	
		00000	26-2574977				UnitedHealth Military & Veterans Services, LLC	DE	NIA	United HealthCare Services, Inc.	Ownership	100.000	UnitedHealth Group Incorporated	
		00000	98-0559902				UnitedHealth UK Limited	GBR	NIA	Optum UK Solutions Group Limited	Ownership	100.000	UnitedHealth Group Incorporated	
.0707	UnitedHealth Group Incorporated	95174	33-0115163				UnitedHealthcare Benefits of Texas, Inc.	TX	IA	United HealthCare Services, Inc.	Ownership	100.000	UnitedHealth Group Incorporated	
		00000	46-4348775				UnitedHealthcare Community Plan of California, Inc.	CA	NIA	AmeriChoice Corporation	Ownership	100.000	UnitedHealth Group Incorporated	
.0707	UnitedHealth Group Incorporated	12323	56-2451429				UnitedHealthcare Community Plan of Ohio, Inc.	OH	IA	Three Rivers Holdings, Inc.	Ownership	100.000	UnitedHealth Group Incorporated	
.0707	UnitedHealth Group Incorporated	11141	91-2008361				UnitedHealthcare Community Plan of Texas, L.L.C.	TX	IA	Ovations, Inc.	Ownership	100.000	UnitedHealth Group Incorporated	
.0707	UnitedHealth Group Incorporated	95467	38-3204052				UnitedHealthcare Community Plan, Inc.	MI	IA	AmeriChoice Corporation	Ownership	100.000	UnitedHealth Group Incorporated	
		00000	98-1099116				UnitedHealthcare India Private Limited	JND	NIA	UnitedHealthcare International II B.V.	Ownership	99.994	UnitedHealth Group Incorporated	
		00000	98-1099116				UnitedHealthcare India Private Limited	JND	NIA	UnitedHealth International, Inc.	Ownership	0.007	UnitedHealth Group Incorporated	
.0707	UnitedHealth Group Incorporated	79413	36-2739571				UnitedHealthcare Insurance Company	CT	IA	UHC Holdings, Inc.	Ownership	100.000	UnitedHealth Group Incorporated	
		00000	36-3800349				UnitedHealthcare Insurance Company of Illinois	IL	IA	UnitedHealthcare Insurance Company	Ownership	100.000	UnitedHealth Group Incorporated	
.0707	UnitedHealth Group Incorporated	60318	36-3800349				UnitedHealthcare Insurance Company of New York	NY	IA	UnitedHealthcare Insurance Company	Ownership	100.000	UnitedHealth Group Incorporated	
		00000	11-3283886				UnitedHealthcare Insurance Company of the River Valley	IL	IA	UnitedHealthcare Services Company of the River Valley, Inc.	Ownership	100.000	UnitedHealth Group Incorporated	
.0707	UnitedHealth Group Incorporated	12231	20-1902768				UnitedHealthcare International Asia, LLC	DE	NIA	UnitedHealth Group Incorporated	Ownership	100.000	UnitedHealth Group Incorporated	
		00000	41-1988797				UnitedHealthcare International I B.V.	NLD	NIA	UnitedHealth Group International L.P.	Ownership	75.760	UnitedHealth Group Incorporated	
		00000	98-1100512				UnitedHealthcare International I B.V.	NLD	NIA	UnitedHealth Group International B.V.	Ownership	24.240	UnitedHealth Group Incorporated	
		00000	98-1100512				UnitedHealthcare International I B.V.	NLD	NIA	UnitedHealth Group International B.V.	Ownership	24.240	UnitedHealth Group Incorporated	
		00000	98-1079595				UnitedHealthcare International I S.a.r.l.	LUX	NIA	UnitedHealth Group International L.P.	Ownership	100.000	UnitedHealth Group Incorporated	

STATEMENT AS OF JUNE 30, 2014 OF THE Unison Health Plan of the Capital Area, Inc.

SCHEDULE Y
PART 1A - DETAIL OF INSURANCE HOLDING COMPANY SYSTEM

1	2	3	4	5	6	7	8	9	10	11	12	13	14	15
Group Code	Group Name	NAIC Company Code	Federal ID Number	Federal RSSD	CIK	Name of Securities Exchange if Publicly Traded (U.S. or International)	Names of Parent, Subsidiaries Or Affiliates	Domiciliary Location	Relationship to Reporting Entity	Directly Controlled by (Name of Entity/Person)	Type of Control (Ownership, Board, Management, Attorney-in-Fact, Influence, Other)	If Control is Ownership Provide Percentage	Ultimate Controlling Entity(ies)/Person(s)	*
		00000	98-1100980				UnitedHealthcare International II B.V.	NLD	NIA	UnitedHealth Group International B.V.	Ownership	100.000	UnitedHealth Group Incorporated	
		00000	98-1079459				UnitedHealthcare International II S.á.r.l.	LUX	NIA	UnitedHealthcare International I S.á.r.l.	Ownership	100.000	UnitedHealth Group Incorporated	
		00000	98-1077436				UnitedHealthcare International III S.á.r.l.	LUX	NIA	UnitedHealthcare International II S.á.r.l.	Ownership	100.000	UnitedHealth Group Incorporated	
		00000	98-1080926				UnitedHealthcare International IV S.á.r.l.	LUX	NIA	UnitedHealthcare International II S.á.r.l.	Ownership	100.000	UnitedHealth Group Incorporated	
.0707	UnitedHealth Group Incorporated	97179	86-0207231				UnitedHealthcare Life Insurance Company	WI	IA	Golden Rule Financial Corporation	Ownership	100.000	UnitedHealth Group Incorporated	
.0707	UnitedHealth Group Incorporated	95784	63-0899562				UnitedHealthcare of Alabama, Inc.	AL	IA	UnitedHealthcare, Inc.	Ownership	100.000	UnitedHealth Group Incorporated	
.0707	UnitedHealth Group Incorporated	96016	86-0507074				UnitedHealthcare of Arizona, Inc.	AZ	IA	UnitedHealthcare, Inc.	Ownership	100.000	UnitedHealth Group Incorporated	
.0707	UnitedHealth Group Incorporated	95446	63-1036819				UnitedHealthcare of Arkansas, Inc.	AR	IA	UnitedHealthcare, Inc.	Ownership	100.000	UnitedHealth Group Incorporated	
.0707	UnitedHealth Group Incorporated	95090	84-1004639				UnitedHealthcare of Colorado, Inc.	CO	IA	UnitedHealthcare, Inc.	Ownership	100.000	UnitedHealth Group Incorporated	
.0707	UnitedHealth Group Incorporated	95264	59-1293865				UnitedHealthcare of Florida, Inc.	FL	IA	UnitedHealthcare, Inc.	Ownership	100.000	UnitedHealth Group Incorporated	
.0707	UnitedHealth Group Incorporated	95850	58-1653544				UnitedHealthcare of Georgia, Inc.	GA	IA	UnitedHealthcare, Inc.	Ownership	100.000	UnitedHealth Group Incorporated	
.0707	UnitedHealth Group Incorporated	95776	36-3280214				UnitedHealthcare of Illinois, Inc.	IL	IA	UnitedHealthcare, Inc.	Ownership	100.000	UnitedHealth Group Incorporated	
.0707	UnitedHealth Group Incorporated	96644	62-1240316				UnitedHealthcare of Kentucky, Ltd.	KY	IA	United HealthCare Services, Inc.	Ownership	94.180	UnitedHealth Group Incorporated	8
.0707	UnitedHealth Group Incorporated	96644	62-1240316				UnitedHealthcare of Kentucky, Ltd.	KY	IA	UnitedHealthcare, Inc.	Ownership	5.820	UnitedHealth Group Incorporated	8
.0707	UnitedHealth Group Incorporated	95833	72-1074008				UnitedHealthcare of Louisiana, Inc.	LA	IA	UnitedHealthcare, Inc.	Ownership	100.000	UnitedHealth Group Incorporated	
.0707	UnitedHealth Group Incorporated	95716	63-1036817				UnitedHealthcare of Mississippi, Inc.	MS	IA	UnitedHealthcare, Inc.	Ownership	100.000	UnitedHealth Group Incorporated	
.0707	UnitedHealth Group Incorporated	95149	05-0413469				UnitedHealthcare of New England, Inc.	RI	IA	United HealthCare Services, Inc.	Ownership	100.000	UnitedHealth Group Incorporated	
.0707	UnitedHealth Group Incorporated	13214	26-2697886				UnitedHealthcare of New Mexico, Inc.	NM	IA	UnitedHealthcare Insurance Company	Ownership	100.000	UnitedHealth Group Incorporated	
.0707	UnitedHealth Group Incorporated	95085	06-1172891				UnitedHealthcare of New York, Inc.	NY	IA	AmeriChoice Corporation	Ownership	100.000	UnitedHealth Group Incorporated	
.0707	UnitedHealth Group Incorporated	95103	56-1461010				UnitedHealthcare of North Carolina, Inc.	NC	IA	UnitedHealthcare, Inc.	Ownership	100.000	UnitedHealth Group Incorporated	
.0707	UnitedHealth Group Incorporated	95186	31-1142815				UnitedHealthcare of Ohio, Inc.	OH	IA	United HealthCare Services, Inc.	Ownership	100.000	UnitedHealth Group Incorporated	
.0707	UnitedHealth Group Incorporated	96903	33-0115166				UnitedHealthcare of Oklahoma, Inc.	OK	IA	United HealthCare Services, Inc.	Ownership	100.000	UnitedHealth Group Incorporated	
.0707	UnitedHealth Group Incorporated	95893	93-0938819				UnitedHealthcare of Oregon, Inc.	OR	IA	United HealthCare Services, Inc.	Ownership	100.000	UnitedHealth Group Incorporated	
.0707	UnitedHealth Group Incorporated	95220	25-1756858				UnitedHealthcare of Pennsylvania, Inc.	PA	IA	Three Rivers Holdings, Inc.	Ownership	100.000	UnitedHealth Group Incorporated	
.0707	UnitedHealth Group Incorporated	95765	95-3939697				UnitedHealthcare of Texas, Inc.	TX	IA	UnitedHealthcare, Inc.	Ownership	100.000	UnitedHealth Group Incorporated	
							UnitedHealthcare of the Mid-Atlantic, Inc.							
.0707	UnitedHealth Group Incorporated	95025	52-1130183				UnitedHealthcare of the Mid-Atlantic, Inc.	MD	IA	UnitedHealthcare, Inc.	Ownership	100.000	UnitedHealth Group Incorporated	
.0707	UnitedHealth Group Incorporated	95591	47-0676824				UnitedHealthcare of the Midlands, Inc.	NE	IA	UnitedHealthcare, Inc.	Ownership	100.000	UnitedHealth Group Incorporated	
.0707	UnitedHealth Group Incorporated	96385	43-1361841				UnitedHealthcare of the Midwest, Inc.	MO	IA	UnitedHealthcare, Inc.	Ownership	100.000	UnitedHealth Group Incorporated	
.0707	UnitedHealth Group Incorporated	95501	41-1488563				UnitedHealthcare of Utah, Inc.	UT	IA	UnitedHealthcare, Inc.	Ownership	100.000	UnitedHealth Group Incorporated	
.0707	UnitedHealth Group Incorporated	48038	91-1312551				UnitedHealthcare of Washington, Inc.	WA	IA	United HealthCare Services, Inc.	Ownership	100.000	UnitedHealth Group Incorporated	
.0707	UnitedHealth Group Incorporated	95710	39-1555888				UnitedHealthcare of Wisconsin, Inc.	WI	IA	UnitedHealthcare, Inc.	Ownership	100.000	UnitedHealth Group Incorporated	
.0707	UnitedHealth Group Incorporated	95378	36-3379945				UnitedHealthcare Plan of the River Valley, Inc.	IL	IA	UnitedHealthcare Services Company of the River Valley, Inc.	Ownership	100.000	UnitedHealth Group Incorporated	
		00000	47-0854646				UnitedHealthcare Service LLC	DE	NIA	UnitedHealthcare Insurance Company	Ownership	100.000	UnitedHealth Group Incorporated	
		00000	36-3355110				UnitedHealthcare Specialty Benefits, LLC	DE	NIA	UnitedHealthcare, Inc.	Ownership	100.000	UnitedHealth Group Incorporated	
		00000	01-0518346				UnitedHealthcare, Inc.	ME	NIA	Specialty Benefits, LLC	Ownership	100.000	UnitedHealth Group Incorporated	
		00000	41-1922511				UnitedHealthcare, Inc.	DE	NIA	United HealthCare Services, Inc.	Ownership	100.000	UnitedHealth Group Incorporated	
		00000	37-0920164				UnitedHealthOne Agency, Inc.	IN	NIA	Golden Rule Financial Corporation	Ownership	100.000	UnitedHealth Group Incorporated	
		00000	87-0757396				Valley Physicians Network, Inc.	CA	NIA	PrimeCare Medical Network, Inc.	Ownership	100.000	UnitedHealth Group Incorporated	
		00000	74-2797745				WellMed Medical Management of Florida, Inc.	FL	NIA	WellMed Medical Management, Inc.	Ownership	100.000	UnitedHealth Group Incorporated	
		00000	74-2786364				WellMed Medical Management, Inc.	TX	NIA	Collaborative Care Holdings, LLC	Ownership	80.000	UnitedHealth Group Incorporated	2
		00000	45-0636596				WESTMED Practice Partners LLC	DE	NIA	Collaborative Care Holdings, LLC	Ownership	86.000	UnitedHealth Group Incorporated	2
		00000	52-2102846				XLHealth Corporation	MD	NIA	United HealthCare Services, Inc.	Ownership	100.000	UnitedHealth Group Incorporated	
		00000	98-1107695				XLHealth Corporation India Private Limited	IND	NIA	XLHealth Corporation	Ownership	100.000	UnitedHealth Group Incorporated	

SCHEDULE Y
PART 1A - DETAIL OF INSURANCE HOLDING COMPANY SYSTEM

1	2	3	4	5	6	7	8	9	10	11	12	13	14	15
Group Code	Group Name	NAIC Company Code	Federal ID Number	Federal RSSD	CIK	Name of Securities Exchange if Publicly Traded (U.S. or International)	Names of Parent, Subsidiaries Or Affiliates	Domiciliary Location	Relationship to Reporting Entity	Directly Controlled by (Name of Entity/Person)	Type of Control (Ownership, Board, Management, Attorney-in-Fact, Influence, Other)	If Control is Ownership Provide Percentage	Ultimate Controlling Entity(ies)/Person(s)	*
	00000	11-3764012	Your Health Options Insurance Services, Inc.CA.....NIA.....	PrimeCare Medical Network, Inc.	Ownership.....	..100.000	UnitedHealth Group Incorporated
	00000	27-0172594	Your Partner in Health Services, Inc.IL.....NIA.....	North American Medical Management - Illinois, Inc.	Ownership.....	..100.000	UnitedHealth Group Incorporated

Asterisk	Explanation
1	The remaining 0.004 % is owned by United Behavioral Health.
2	The remaining percentage is owned by a non-affiliated company.
3	The remaining ownership percent is owned by an officer of the company.
4	The remaining 9.77% is owned by the former controlling shareholders of Amil Participações S.A.
5	The remaining percent is as follows: 0.011477% owned by Treasury Shares and 1.44% owned by external shareholders.
6	The remaining percentage is owned by an external stakeholder or party.

SUPPLEMENTAL EXHIBITS AND SCHEDULES INTERROGATORIES

The following supplemental reports are required to be filed as part of your statement filing. However, in the event that your company does not transact the type of business for which the special report must be filed, your response of NO to the specific interrogatory will be accepted in lieu of filing a "NONE" report and a bar code will be printed below. If the supplement is required of your company but is not being filed for whatever reason enter SEE EXPLANATION and provide an explanation following the interrogatory questions.

Response

1. Will the Medicare Part D Coverage Supplement be filed with the state of domicile and the NAIC with this statement?

NO

Explanation:

1. Unison Health Plan of the Capital Area, Inc. does not write Medicare Part D Coverage Supplement business.

Bar Code:

1. Medicare Part D Coverage Supplement [Document Identifier 365]



OVERFLOW PAGE FOR WRITE-INS

STATEMENT AS OF JUNE 30, 2014 OF THE Unison Health Plan of the Capital Area, Inc.

SCHEDULE A - VERIFICATION

Real Estate

	1 Year to Date	2 Prior Year Ended December 31
1. Book/adjusted carrying value, December 31 of prior year		
2. Cost of acquired:		
2.1 Actual cost at time of acquisition		
2.2 Additional investment made after acquisition		
3. Current year change in encumbrances		
4. Total gain (loss) on disposals		
5. Deduct amounts received on disposals		
6. Total foreign exchange change in book/adjusted carrying value		
7. Deduct current year's other than temporary impairment recognized		
8. Deduct current year's depreciation		
9. Book/adjusted carrying value at the end of current period (Lines 1+2+3+4-5+6-7-8)		
10. Deduct total nonadmitted amounts		
11. Statement value at end of current period (Line 9 minus Line 10)		

NONE

SCHEDULE B - VERIFICATION

Mortgage Loans

	1 Year to Date	2 Prior Year Ended December 31
1. Book value/recorded investment excluding accrued interest, December 31 of prior year		
2. Cost of acquired:		
2.1 Actual cost at time of acquisition		
2.2 Additional investment made after acquisition		
3. Capitalized deferred interest and other		
4. Accrual of discount		
5. Unrealized valuation increase (decrease)		
6. Total gain (loss) on disposals		
7. Deduct amounts received on disposals		
8. Deduct amortization of premium and mortgage interest points and commitment fees		
9. Total foreign exchange change in book value/recorded investment excluding accrued interest		
10. Deduct current year's other than temporary impairment recognized		
11. Book value/recorded investment excluding accrued interest at end of current period (Lines 1+2+3+4+5+6-7-8+9-10)		
12. Total valuation allowance		
13. Subtotal (Line 11 plus Line 12)		
14. Deduct total nonadmitted amounts		
15. Statement value at end of current period (Line 13 minus Line 14)		

NONE

SCHEDULE BA - VERIFICATION

Other Long-Term Invested Assets

	1 Year to Date	2 Prior Year Ended December 31
1. Book/adjusted carrying value, December 31 of prior year		
2. Cost of acquired:		
2.1 Actual cost at time of acquisition		
2.2 Additional investment made after acquisition		
3. Capitalized deferred interest and other		
4. Accrual of discount		
5. Unrealized valuation increase (decrease)		
6. Total gain (loss) on disposals		
7. Deduct amounts received on disposals		
8. Deduct amortization of premium and depreciation		
9. Total foreign exchange change in book/adjusted carrying value		
10. Deduct current year's other than temporary impairment recognized		
11. Book/adjusted carrying value at end of current period (Lines 1+2+3+4+5+6-7-8+9-10)		
12. Deduct total nonadmitted amounts		
13. Statement value at end of current period (Line 11 minus Line 12)		

NONE

SCHEDULE D - VERIFICATION

Bonds and Stocks

	1 Year to Date	2 Prior Year Ended December 31
1. Book/adjusted carrying value of bonds and stocks, December 31 of prior year	10,528,031	32,571,460
2. Cost of bonds and stocks acquired	0	5,500,611
3. Accrual of discount	238	3,042
4. Unrealized valuation increase (decrease)	0	0
5. Total gain (loss) on disposals	4,105	(48,816)
6. Deduct consideration for bonds and stocks disposed of	10,155,823	26,986,248
7. Deduct amortization of premium	38,009	512,018
8. Total foreign exchange change in book/adjusted carrying value	0	0
9. Deduct current year's other than temporary impairment recognized	0	0
10. Book/adjusted carrying value at end of current period (Lines 1+2+3+4+5-6-7+8-9)	338,542	10,528,031
11. Deduct total nonadmitted amounts	0	0
12. Statement value at end of current period (Line 10 minus Line 11)	338,542	10,528,031

STATEMENT AS OF JUNE 30, 2014 OF THE Unison Health Plan of the Capital Area, Inc.

SCHEDULE D - PART 1B

Showing the Acquisitions, Dispositions and Non-Trading Activity
During the Current Quarter for all Bonds and Preferred Stock by NAIC Designation

NAIC Designation	1 Book/Adjusted Carrying Value Beginning of Current Quarter	2 Acquisitions During Current Quarter	3 Dispositions During Current Quarter	4 Non-Trading Activity During Current Quarter	5 Book/Adjusted Carrying Value End of First Quarter	6 Book/Adjusted Carrying Value End of Second Quarter	7 Book/Adjusted Carrying Value End of Third Quarter	8 Book/Adjusted Carrying Value December 31 Prior Year
BONDS								
1. NAIC 1 (a)	13,314,544	10,435,835	20,052,437	(15,222)	13,314,544	3,682,720	0	13,411,586
2. NAIC 2 (a)	316,406	0	314,682	(1,724)	316,406	0	0	166,913
3. NAIC 3 (a)	0	0	0	0	0	0	0	0
4. NAIC 4 (a)	0	0	0	0	0	0	0	0
5. NAIC 5 (a)	0	0	0	0	0	0	0	0
6. NAIC 6 (a)	0	0	0	0	0	0	0	0
7. Total Bonds	13,630,950	10,435,835	20,367,119	(16,946)	13,630,950	3,682,720	0	13,578,499
PREFERRED STOCK								
8. NAIC 1	0	0	0	0	0	0	0	0
9. NAIC 2	0	0	0	0	0	0	0	0
10. NAIC 3	0	0	0	0	0	0	0	0
11. NAIC 4	0	0	0	0	0	0	0	0
12. NAIC 5	0	0	0	0	0	0	0	0
13. NAIC 6	0	0	0	0	0	0	0	0
14. Total Preferred Stock	0	0	0	0	0	0	0	0
15. Total Bonds and Preferred Stock	13,630,950	10,435,835	20,367,119	(16,946)	13,630,950	3,682,720	0	13,578,499

(a) Book/Adjusted Carrying Value column for the end of the current reporting period includes the following amount of non-rated short-term and cash equivalent bonds by NAIC designation: NAIC 1 \$0 ; NAIC 2 \$0 ; NAIC 3 \$0 ; NAIC 4 \$0 ; NAIC 5 \$0 ; NAIC 6 \$0

S102

SCHEDULE DA - PART 1

Short-Term Investments

	1	2	3	4	5
	Book/Adjusted Carrying Value	Par Value	Actual Cost	Interest Collected Year-to-Date	Paid for Accrued Interest Year-to-Date
9199999 Totals	3,344,178	xxx	3,344,178	626	0

SCHEDULE DA - VERIFICATION

Short-Term Investments

	1	2
	Year To Date	Prior Year Ended December 31
1. Book/adjusted carrying value, December 31 of prior year	3,050,468	5,586,388
2. Cost of short-term investments acquired	10,992,579	29,620,964
3. Accrual of discount	0	0
4. Unrealized valuation increase (decrease)	0	0
5. Total gain (loss) on disposals	0	(633)
6. Deduct consideration received on disposals	10,698,869	32,134,704
7. Deduct amortization of premium	0	21,547
8. Total foreign exchange change in book/adjusted carrying value	0	0
9. Deduct current year's other than temporary impairment recognized	0	0
10. Book/adjusted carrying value at end of current period (Lines 1+2+3+4+5-6-7+8-9)	3,344,178	3,050,468
11. Deduct total nonadmitted amounts	0	0
12. Statement value at end of current period (Line 10 minus Line 11)	3,344,178	3,050,468

Schedule DB - Part A - Verification - Options, Caps, Floors, Collars, Swaps and Forwards
N O N E

Schedule DB - Part B - Verification - Futures Contracts
N O N E

Schedule DB - Part C - Section 1 - Replication (Synthetic Asset) Transactions (RSATs) Open
N O N E

Schedule DB-Part C-Section 2-Reconciliation of Replication (Synthetic Asset) Transactions Open
N O N E

Schedule DB - Verification - Book/Adjusted Carrying Value, Fair Value and Potential Exposure of
Derivatives
N O N E

Schedule E - Verification - Cash Equivalents
N O N E

Schedule A - Part 2 - Real Estate Acquired and Additions Made
N O N E

Schedule A - Part 3 - Real Estate Disposed
N O N E

Schedule B - Part 2 - Mortgage Loans Acquired
N O N E

Schedule B - Part 3 - Mortgage Loans Disposed, Transferred or Repaid
N O N E

Schedule BA - Part 2 - Other Long-Term Invested Assets Acquired
N O N E

Schedule BA - Part 3 - Other Long-Term Invested Assets Disposed, Transferred or Repaid
N O N E

Schedule D - Part 3 - Long-Term Bonds and Stocks Acquired
N O N E

STATEMENT AS OF JUNE 30, 2014 OF THE Unison Health Plan of the Capital Area, Inc.

SCHEDULE D - PART 4

Show All Long-Term Bonds and Stock Sold, Redeemed or Otherwise Disposed of During the Current Quarter

1	2	3	4	5	6	7	8	9	10	Change In Book/Adjusted Carrying Value					16	17	18	19	20	21	22
										11	12	13	14	15							
CUSIP Identification	Description	Foreign	Disposal Date	Name of Purchaser	Number of Shares of Stock	Consideration	Par Value	Actual Cost	Prior Year Book/Adjusted Carrying Value	Unrealized Valuation Increase/(Decrease)	Current Year's (Amortization)/Accretion	Current Year's Other Than Temporary Impairment Recognized	Total Change in Book/Adjusted Carrying Value (11 + 12 - 13)	Total Foreign Exchange Change in Book/Adjusted Carrying Value	Book/Adjusted Carrying Value at Disposal Date	Foreign Exchange Gain (Loss) on Disposal	Realized Gain (Loss) on Disposal	Total Gain (Loss) on Disposal	Bond Interest/Stock Dividends Received During Year	Stated Contractual Maturity Date	NAIC Designation or Market Indicator (a)
38378B-G2-9	GNMA GNR 2012-109 AB CMBS 1.388% 09/16/44		04/01/2014	Paydown		653	653	659	659	.0	(6)	.0	(6)	.0	653	.0	.0	.0	.3	09/16/2044	1
38378B-G2-9	GNMA GNR 2012-109 AB CMBS 1.388% 09/16/44		05/01/2014	Paydown		644	644	650	650	.0	(6)	.0	(6)	.0	644	.0	.0	.0	.4	09/16/2044	1
38378B-G2-9	GNMA GNR 2012-109 AB CMBS 1.388% 09/16/44		06/01/2014	Paydown		650	650	656	656	.0	(6)	.0	(6)	.0	650	.0	.0	.0	.5	09/16/2044	1
38378B-G2-9	GNMA GNR 2012-109 AB CMBS 1.388% 09/16/44		06/06/2014	JP Morgan Chase		322,874	337,646	341,023	340,777	.0	(84)	.0	(84)	.0	340,693	.0	(17,819)	(17,819)	2,473	09/16/2044	1
38378B-TV-1	GNMA GNR 2012-67 AB CMBS 1.589% 06/16/39		04/01/2014	Paydown		2,807	2,807	2,857	2,852	.0	(44)	.0	(44)	.0	2,807	.0	.0	.0	.15	06/16/2039	1
38378B-TV-1	GNMA GNR 2012-67 AB CMBS 1.589% 06/16/39		05/01/2014	Paydown		20,692	20,692	21,057	21,018	.0	(326)	.0	(326)	.0	20,692	.0	.0	.0	.137	06/16/2039	1
38378B-TV-1	GNMA GNR 2012-67 AB CMBS 1.589% 06/16/39		06/01/2014	Paydown		754	754	768	768	.0	(12)	.0	(12)	.0	754	.0	.0	.0	.6	06/16/2039	1
38378B-TV-1	GNMA GNR 2012-67 AB CMBS 1.589% 06/16/39		06/06/2014	JP Morgan Chase		254,862	255,062	259,565	259,081	.0	(170)	.0	(170)	.0	258,911	.0	(4,049)	(4,049)	2,139	06/16/2039	1
38378B-X2-0	GNMA GNR 2012-132 AB CMBS 1.240% 06/16/51		04/01/2014	Paydown		631	631	637	637	.0	(6)	.0	(6)	.0	631	.0	.0	.0	.3	06/16/2051	1
38378B-X2-0	GNMA GNR 2012-132 AB CMBS 1.240% 06/16/51		05/01/2014	Paydown		640	640	646	646	.0	(6)	.0	(6)	.0	640	.0	.0	.0	.3	06/16/2051	1
38378B-X2-0	GNMA GNR 2012-132 AB CMBS 1.240% 06/16/51		06/01/2014	Paydown		648	648	654	654	.0	(6)	.0	(6)	.0	648	.0	.0	.0	.4	06/16/2051	1
38378B-X2-0	GNMA GNR 2012-132 AB CMBS 1.240% 06/16/51		06/06/2014	JP Morgan Chase		311,225	327,982	331,055	331,055	.0	(82)	.0	(82)	.0	330,973	.0	(19,749)	(19,749)	2,147	06/16/2051	1
91282B-NP-1	US Treasury Note 1.750% 07/31/15		06/06/2014	Barclays Group Inc.		712,822	700,000	729,342	715,492	.0	(4,281)	.0	(4,281)	.0	711,210	.0	1,611	1,611	10,490	07/31/2015	1
91282B-NK-3	US Treasury Note 1.375% 06/30/18		06/06/2014	Barclays Group Inc.		1,001,481	1,000,000	1,001,152	1,001,059	.0	(101)	.0	(101)	.0	1,000,958	.0	523	523	6,077	06/30/2018	1
0599999 Subtotal - Bonds - U.S. Governments						2,631,383	2,648,809	2,690,928	2,676,002	0	(5,136)	0	(5,136)	0	2,670,864	0	(39,483)	(39,483)	23,506	XXX	XXX
313380-SK-9	FHLB Note Call 0.720% 08/08/16		06/06/2014	Piper Jaffray		491,256	491,379	490,642	490,897	.0	80	.0	80	.0	490,978	.0	279	279	2,958	08/08/2016	1FE
313500-GY-3	FNMA Note Non Call 1.250% 01/30/17		06/06/2014	JP Morgan Chase		506,575	500,000	508,275	505,585	.0	(785)	.0	(785)	.0	504,800	.0	1,775	1,775	5,365	01/30/2017	1
3137EA-QM-9	FHLMC Note Non Call 1.750% 09/10/15		06/06/2014	JP Morgan Chase		509,580	500,000	518,552	509,819	.0	(2,523)	.0	(2,523)	.0	507,297	.0	2,283	2,283	6,538	09/10/2015	1
3199999 Subtotal - Bonds - U.S. Special Revenues						1,507,411	1,491,379	1,517,469	1,506,301	0	(3,228)	0	(3,228)	0	1,503,075	0	4,337	4,337	14,861	XXX	XXX
00206R-AW-2	AT&T INC Corp Note MW 15BP 2.950% 05/15/16		06/09/2014	Barclays Group Inc.		192,437	185,000	197,687	192,892	.0	(1,470)	.0	(1,470)	.0	191,422	.0	1,015	1,015	3,138	05/15/2016	1FE
00404E-AJ-6	ACE INA HOLDINGS Corp Note Cont Call 5.700% 02/15/17		06/06/2014	Pershing		162,104	145,000	172,024	163,648	.0	(2,593)	.0	(2,593)	.0	161,055	.0	1,049	1,049	6,796	02/15/2017	1FE
02582J-GD-6	AMERICAN EXPRESS AMXCA 2012-2 A ABS 0.680% 03/15/18		06/06/2014	JP Morgan Chase		250,625	250,000	250,000	249,996	.0	(1)	.0	(1)	.0	249,994	.0	631	631	831	03/15/2018	1FE
0258M0-DD-8	AMERICAN EXPRESS Corp Note Non Call 2.375% 03/24/17		06/06/2014	Barclays Group Inc.		207,088	200,000	205,858	204,050	.0	(541)	.0	(541)	.0	203,509	.0	3,579	3,579	3,391	03/24/2017	1FE
037833-AJ-9	APPLE INC Corp Note MW 10BP 1.000% 05/03/18		06/06/2014	RBC Capital Markets		195,604	200,000	199,130	199,239	.0	76	.0	76	.0	199,315	.0	(3,711)	(3,711)	1,211	05/03/2018	1FE
14912L-4X-6	CATERPILLAR FINL Corp Note Non Call 2.050% 08/01/16		06/09/2014	Barclays Group Inc.		174,631	170,000	177,070	174,599	.0	(786)	.0	(786)	.0	173,813	.0	817	817	3,011	08/01/2016	1FE
161571-FL-3	CHASE ISSUANCE T CHAIT 2012-A5 A5 ABS 0.590% 08/15/17		06/06/2014	JP Morgan Chase		250,273	250,000	249,991	249,991	.0	.0	.0	.0	.0	249,991	.0	282	282	721	08/15/2017	1FE
166764-AE-0	Chevron Corp Note Call MW 10BP 1.718% 06/24/18		06/09/2014	Wachovia Bank		115,535	115,000	114,425	114,483	.0	50	.0	50	.0	114,532	.0	1,003	1,003	922	06/24/2018	1FE
172967-EM-9	CITIGROUP INC Corp Note Non Call 6.125% 11/21/17		06/09/2014	Wachovia Bank		165,805	145,000	164,939	159,915	.0	(1,618)	.0	(1,618)	.0	158,296	.0	7,508	7,508	4,959	11/21/2017	1FE
17305E-EW-1	CITIBANK CREDIT CCCIT 2012-A1 A1 ABS 0.550% 10/07/17		06/06/2014	JP Morgan Chase		250,078	250,000	249,859	249,916	.0	21	.0	21	.0	249,937	.0	141	141	932	10/07/2017	1FE
22160K-AC-9	Costco Wholesale Corp Note MW 15BP PPut 5.500% 03/15/17		06/09/2014	Wachovia Bank		162,545	145,000	174,668	166,087	.0	(2,886)	.0	(2,886)	.0	163,201	.0	(656)	(656)	5,915	03/15/2017	1FE
24422E-RF-8	JOHN DEERE CAP Corp Note Non Call 1.850% 09/15/16		06/09/2014	Pershing		199,237	195,000	201,156	199,018	.0	(652)	.0	(652)	.0	198,366	.0	871	871	2,676	09/15/2016	1FE
278642-AG-8	EBAY Inc Corp Note MW 12.5BP 1.350% 07/15/17		06/06/2014	Pershing		145,870	145,000	145,602	145,440	.0	(54)	.0	(54)	.0	145,386	.0	484	484	1,773	07/15/2017	1FE
29379V-AA-1	ENTERPRISE PRODU Corp Note MW 25BP 6.300% 09/15/17		06/09/2014	KEYBANC CAP/ McDonald		167,339	145,000	174,972	166,913	.0	(2,540)	.0	(2,540)	.0	164,373	.0	2,966	2,966	6,775	09/15/2017	2FE
34529Y-AB-2	Ford Credit Auto FORDO 2012-C A3 ABS 0.580% 12/15/16		04/15/2014	Paydown		16,637	16,637	16,635	16,636	.0	1	.0	1	.0	16,637	.0	.0	.0	.32	12/15/2016	1FE
34529Y-AB-2	Ford Credit Auto FORDO 2012-C A3 ABS 0.580% 12/15/16		05/15/2014	Paydown		15,488	15,488	15,487	15,488	.0	.0	.0	.0	.0	15,488	.0	.0	.0	.37	12/15/2016	1FE
34529Y-AB-2	Ford Credit Auto FORDO 2012-C A3 ABS 0.580% 12/15/16		06/06/2014	Robert Baird & Co		190,348	190,348	190,334	190,343	.0	.2	.0	.2	.0	190,345	.0	.4	.4	.540	12/15/2016	1FE
438516-AS-5	HONEYWELL INTL Corp Note Cont Call 5.300% 03/15/17		06/09/2014	JP Morgan Chase		189,579	170,000	200,187	190,798	.0	(2,827)	.0	(2,827)	.0	187,971	.0	1,608	1,608	6,682	03/15/2017	1FE
44890H-AD-5	Hyundai Auto Rec Tr HART 2012-B A4 ABS 0.810% 03/15/18		06/06/2014	Robert Baird & Co		250,313	250,000	249,954	249,973	.0	.5	.0	.5	.0	249,979	.0	334	334	.990	03/15/2018	1FE

E05

STATEMENT AS OF JUNE 30, 2014 OF THE Unison Health Plan of the Capital Area, Inc.

SCHEDULE D - PART 4

Show All Long-Term Bonds and Stock Sold, Redeemed or Otherwise Disposed of During the Current Quarter

1	2	3	4	5	6	7	8	9	10	Change In Book/Adjusted Carrying Value					16	17	18	19	20	21	22	
										11	12	13	14	15								
CUSIP Identification	Description	Foreign	Disposal Date	Name of Purchaser	Number of Shares of Stock	Consideration	Par Value	Actual Cost	Prior Year Book/Adjusted Carrying Value	Unrealized Valuation Increase/(Decrease)	Current Year's (Amortization)/Accretion	Current Year's Other Than Temporary Impairment Recognized	Total Change in Book/Adjusted Carrying Value (11 + 12 - 13)	Total Foreign Exchange Change in Book /Adjusted Carrying Value	Book/Adjusted Carrying Value at Disposal Date	Foreign Exchange Gain (Loss) on Disposal	Realized Gain (Loss) on Disposal	Total Gain (Loss) on Disposal	Bond Interest/Stock Dividends Received During Year	Stated Contractual Maturity Date	NAIC Designation or Market Indicator (a)	
46625H-HX-1	JPMORGAN CHASE Corp Note Non Call 3.450% 03/01/16		06/06/2014	Barclays Group Inc.		151,558	145,000	155,296	151,510	0	(1,310)	0	(1,310)	0	150,200	0	1,358	1,358	3,891	03/01/2016	1FE	
58155Q-AC-7	McKesson Corp Note MW 20BP 3.250% 03/01/16		06/09/2014	Pershing		150,994	145,000	156,058	151,660	0	(1,351)	0	(1,351)	0	150,309	0	685	685	3,678	03/01/2016	2FE	
58768W-AC-3	Mercedes Benz MBART 2013-1 A3 ABS 0.780% 08/15/17		06/06/2014	Robert Baird & Co		250,156	250,000	249,991	249,992	0	2	0	2	0	249,994	0	163	163	953	08/15/2017	1FE	
59018Y-J6-9	MERRILL LYNCH Corp Note Non Call 6.400% 08/28/17		06/09/2014	BNP Paribas Securities Corp		165,950	145,000	163,102	158,373	0	(1,534)	0	(1,534)	0	156,839	0	9,111	9,111	7,321	08/28/2017	1FE	
65476G-AC-6	Nissan Auto Rec Own Tr NAROT 2012-B A3 ABS 0.460% 10/17/16		05/15/2014	Paydown		18,002	18,002	18,002	18,002	0	0	0	0	0	18,002	0	0	0	35	10/17/2016	1FE	
65476G-AC-6	Nissan Auto Rec Own Tr NAROT 2012-B A3 ABS 0.460% 10/17/16		06/06/2014	Robert Baird & Co		231,853	231,998	231,995	231,996	0	0	0	0	0	231,996	0	(143)	(143)	522	10/17/2016	1FE	
693476-BM-4	PNC Funding Corp Note Call 2.700% 09/19/16		06/06/2014	Barclays Group Inc.		176,824	170,000	179,870	176,468	0	(1,070)	0	(1,070)	0	175,397	0	1,426	1,426	3,341	09/19/2016	1FE	
69371R-K5-4	PACCAR FINL CORP Corp Note Non Call 1.600% 03/15/17		06/06/2014	Pershing		171,909	170,000	172,814	171,941	0	(263)	0	(263)	0	171,679	0	230	230	2,010	03/15/2017	1FE	
89233P-6D-3	Toyota Motor Cr Corp Note MW 15BP 1.750% 05/22/17		06/09/2014	Barclays Group Inc.		173,203	170,000	173,181	172,240	0	(289)	0	(289)	0	171,951	0	1,252	1,252	1,653	05/22/2017	1FE	
91159H-HD-5	US BANCORP Corp Note Cont Call 1.650% 05/15/17		06/09/2014	Barclays Group Inc.		116,616	115,000	117,885	117,132	0	(286)	0	(286)	0	116,846	0	(231)	(231)	1,091	05/15/2017	1FE	
94974B-FD-7	WELLS FARGO CO Corp Note Non Call 2.100% 05/08/17		06/09/2014	Stifel Nicolaus & Co.		174,548	170,000	172,351	171,662	0	(215)	0	(215)	0	171,446	0	3,101	3,101	2,122	05/08/2017	1FE	
064159-CQ-7	BANK NOVA SCOTIA Corp Note Non Call 1.375% 07/15/16	B	06/09/2014	RBC Capital Markets		151,898	150,000	150,488	150,414	0	(72)	0	(72)	0	150,342	0	1,555	1,555	1,862	07/15/2016	1FE	
02364W-AN-5	AMERICA MOVIL SA Corp Note MW 20BP 5.625% 11/15/17	F	06/06/2014	Wachovia Bank		165,161	145,000	171,899	164,833	0	(2,198)	0	(2,198)	0	162,635	0	2,526	2,526	4,667	11/15/2017	1FE	
22546Q-AE-7	CRED SUIS NY Corp Note Non Call 3.500% 03/23/15	F	05/15/2014	CitiGroup		133,355	130,000	136,013	134,443	0	(1,381)	0	(1,381)	0	133,063	0	293	293	2,995	03/23/2015	1FE	
3899999	Subtotal - Bonds - Industrial and Miscellaneous (Unaffiliated)					5,533,563	5,337,473	5,598,923	5,520,091	0	(25,780)	0	(25,780)	0	5,494,309	0	39,251	39,251	87,473	XXX	XXX	
8399997	Total - Bonds - Part 4					9,672,357	9,477,661	9,807,320	9,702,394	0	(34,144)	0	(34,144)	0	9,668,248	0	4,105	4,105	125,840	XXX	XXX	
8399998	Total - Bonds - Part 5					XXX	XXX	XXX	XXX	XXX	XXX	XXX	XXX	XXX	XXX	XXX	XXX	XXX	XXX	XXX	XXX	XXX
8399999	Total - Bonds					9,672,357	9,477,661	9,807,320	9,702,394	0	(34,144)	0	(34,144)	0	9,668,248	0	4,105	4,105	125,840	XXX	XXX	
8999997	Total - Preferred Stocks - Part 4					0	XXX	0	0	0	0	0	0	0	0	0	0	0	0	0	XXX	XXX
8999998	Total - Preferred Stocks - Part 5					XXX	XXX	XXX	XXX	XXX	XXX	XXX	XXX	XXX	XXX	XXX	XXX	XXX	XXX	XXX	XXX	XXX
8999999	Total - Preferred Stocks					0	XXX	0	0	0	0	0	0	0	0	0	0	0	0	0	XXX	XXX
9799997	Total - Common Stocks - Part 4					0	XXX	0	0	0	0	0	0	0	0	0	0	0	0	0	XXX	XXX
9799998	Total - Common Stocks - Part 5					XXX	XXX	XXX	XXX	XXX	XXX	XXX	XXX	XXX	XXX	XXX	XXX	XXX	XXX	XXX	XXX	XXX
9799999	Total - Common Stocks					0	XXX	0	0	0	0	0	0	0	0	0	0	0	0	0	XXX	XXX
9899999	Total - Preferred and Common Stocks					0	XXX	0	0	0	0	0	0	0	0	0	0	0	0	0	XXX	XXX
9999999	Totals					9,672,357	XXX	9,807,320	9,702,394	0	(34,144)	0	(34,144)	0	9,668,248	0	4,105	4,105	125,840	XXX	XXX	

(a) For all common stock bearing the NAIC market indicator "U" provide: the number of such issues.....0

Schedule DB - Part A - Section 1 - Options, Caps, Floors, Collars, Swaps and Forwards Open
N O N E

Schedule DB - Part B - Section 1 - Futures Contracts Open
N O N E

Schedule DB - Part B - Section 1B - Brokers with whom cash deposits have been made
N O N E

Schedule DB - Part D - Section 1 - Counterparty Exposure for Derivative Instruments Open
N O N E

Schedule DB - Part D-Section 2 - Collateral for Derivative Instruments Open - Pledged By
N O N E

Schedule DB - Part D-Section 2 - Collateral for Derivative Instruments Open - Pledged To
N O N E

Schedule DL - Part 1 - Reinvested Collateral Assets Owned
N O N E

Schedule DL - Part 2 - Reinvested Collateral Assets Owned
N O N E

SCHEDULE E - PART 1 - CASH

Month End Depository Balances

1 Depository	2 Code	3 Rate of Interest	4 Amount of Interest Received During Current Quarter	5 Amount of Interest Accrued at Current Statement Date	Book Balance at End of Each Month During Current Quarter			9 *
					6 First Month	7 Second Month	8 Third Month	
PNC Operating Account Pittsburgh, PA000	0	0	3,043,471	3,062,380	1,684,097	XXX
0199998. Deposits in ... 0 depositories that do not exceed the allowable limit in any one depository (See instructions) - Open Depositories	XXX	XXX	0	0	0	0	0	XXX
0199999. Totals - Open Depositories	XXX	XXX	0	0	3,043,471	3,062,380	1,684,097	XXX
0299998. Deposits in ... 0 depositories that do not exceed the allowable limit in any one depository (See instructions) - Suspended Depositories	XXX	XXX	0	0	0	0	0	XXX
0299999. Totals - Suspended Depositories	XXX	XXX	0	0	0	0	0	XXX
0399999. Total Cash on Deposit	XXX	XXX	0	0	3,043,471	3,062,380	1,684,097	XXX
0499999. Cash in Company's Office	XXX	XXX	XXX	XXX	0	0	0	XXX
0599999. Total - Cash	XXX	XXX	0	0	3,043,471	3,062,380	1,684,097	XXX

Schedule E - Part 2 - Cash Equivalents - Investments Owned End of Current Quarter

N O N E