



QUARTERLY STATEMENT
AS OF MARCH 31, 2014
OF THE CONDITION AND AFFAIRS OF THE
DC CHARTERED HEALTH PLAN, INC.

NAIC Group Code 0000 , 0000 NAIC Company Code 95748 Employer's ID Number 52-1492499
(Current Period) (Prior Period)

Organized under the Laws of District of Columbia , State of Domicile or Port of Entry District of Columbia

Country of Domicile United States of America

Licensed as business type: Life, Accident & Health[] Property/Casualty[] Hospital, Medical & Dental Service or Indemnity[]
 Dental Service Corporation[] Vision Service Corporation[] Health Maintenance Organization[X]
 Other[] Is HMO Federally Qualified? Yes[] No[X] N/A[]

Incorporated/Organized 09/12/1986 Commenced Business 09/12/1986

Statutory Home Office 1120 Vermont Avenue NW , Washington, DC, US 20005
(Street and Number) (City or Town, State, Country and Zip Code)

Main Administrative Office 1120 Vermont Avenue NW
(Street and Number)

Washington, DC, US 20005 (202)326-8924
(City or Town, State, Country and Zip Code) (Area Code) (Telephone Number)

Mail Address 1120 Vermont Avenue NW , Washington, DC, US 20005
(Street and Number or P.O. Box) (City or Town, State, Country and Zip Code)

Primary Location of Books and Records 1120 Vermont Avenue NW
(Street and Number)

Washington, DC, US 20005 (202)326-8924
(City or Town, State, Country and Zip Code) (Area Code) (Telephone Number)

Internet Web Site Address www.chartered-health.com

Statutory Statement Contact Edward Frederick Oswald (202)326-8924
(Name) (Area Code)(Telephone Number)(Extension)

eoswald@chartered-health.com
(E-Mail Address) (Fax Number)

OFFICERS

OTHERS

Daniel Lawrence Watkins, Special Deputy to the Rehabilitator for DC Charter

DIRECTORS OR TRUSTEES

State of District of Columbia
 County of _____ ss

The officers of this reporting entity, being duly sworn, each depose and say that they are the described officers of the said reporting entity, and that on the reporting period stated above, all of the herein described assets were the absolute property of the said reporting entity, free and clear from any liens or claims thereon, except as herein stated, and that this statement, together with related exhibits, schedules and explanations therein contained, annexed or referred to, is a full and true statement of all the assets and liabilities and of the condition and affairs of the said reporting entity as of the reporting period stated above, and of its income and deductions therefrom for the period ended, and have been completed in accordance with the NAIC Annual Statement Instructions and Accounting Practices and Procedures manual except to the extent that: (1) state law may differ; or, (2) that state rules or regulations require differences in reporting not related to accounting practices and procedures, according to the best of their information, knowledge and belief, respectively. Furthermore, the scope of this attestation by the described officers also includes the related corresponding electronic filing with the NAIC, when required, that is an exact copy (except for formatting differences due to electronic filing) of the enclosed statement. The electronic filing may be requested by various regulators in lieu of or in addition to the enclosed statement.

(Signature)
 Daniel Lawrence Watkins
(Printed Name)
 1.
 Special Deputy Rehabilitator
(Title)

(Signature)
 Edward Frederick Oswald
(Printed Name)
 2.
 Interim CFO
(Title)

(Signature)

(Printed Name)
 3.

(Title)

Subscribed and sworn to before me this _____ day of _____, 2014

- a. Is this an original filing?
 b. If no, 1. State the amendment number
 2. Date filed
 3. Number of pages attached

Yes[X] No[]

(Notary Public Signature)

ASSETS

	Current Statement Date			4 December 31 Prior Year Net Admitted Assets
	1 Assets	2 Nonadmitted Assets	3 Net Admitted Assets (Cols. 1 - 2)	
1. Bonds				
2. Stocks:				
2.1 Preferred stocks				
2.2 Common stocks				
3. Mortgage loans on real estate:				
3.1 First liens				
3.2 Other than first liens				
4. Real estate:				
4.1 Properties occupied by the company (less \$.....0 encumbrances)				
4.2 Properties held for the production of income (less \$.....0 encumbrances)				
4.3 Properties held for sale (less \$.....0 encumbrances)				
5. Cash (\$.....857,478), cash equivalents (\$.....8,399,764) and short-term investments (\$.....0)	9,257,242		9,257,242	9,852,621
6. Contract loans (including \$.....0 premium notes)				
7. Derivatives				
8. Other invested assets				
9. Receivables for securities				
10. Securities lending reinvested collateral assets				
11. Aggregate write-ins for invested assets				
12. Subtotals, cash and invested assets (Lines 1 to 11)	9,257,242		9,257,242	9,852,621
13. Title plants less \$.....0 charged off (for Title insurers only)				
14. Investment income due and accrued				
15. Premiums and considerations:				
15.1 Uncollected premiums and agents' balances in the course of collection				
15.2 Deferred premiums, agents' balances and installments booked but deferred and not yet due (including \$.....0 earned but unbilled premiums)				
15.3 Accrued retrospective premiums				
16. Reinsurance:				
16.1 Amounts recoverable from reinsurers				143,039
16.2 Funds held by or deposited with reinsured companies				
16.3 Other amounts receivable under reinsurance contracts				
17. Amounts receivable relating to uninsured plans				
18.1 Current federal and foreign income tax recoverable and interest thereon				
18.2 Net deferred tax asset				
19. Guaranty funds receivable or on deposit				
20. Electronic data processing equipment and software				
21. Furniture and equipment, including health care delivery assets (\$.....0)				
22. Net adjustments in assets and liabilities due to foreign exchange rates				
23. Receivables from parent, subsidiaries and affiliates				
24. Health care (\$.....0) and other amounts receivable				
25. Aggregate write-ins for other than invested assets	193,081	193,081		0
26. TOTAL assets excluding Separate Accounts, Segregated Accounts and Protected Cell Accounts (Lines 12 to 25)	9,450,323	193,081	9,257,242	9,995,659
27. From Separate Accounts, Segregated Accounts and Protected Cell Accounts				
28. TOTAL (Lines 26 and 27)	9,450,323	193,081	9,257,242	9,995,659
DETAILS OF WRITE-INS				
1101.				
1102.				
1103.				
1198. Summary of remaining write-ins for Line 11 from overflow page				
1199. TOTALS (Lines 1101 through 1103 plus 1198) (Line 11 above)				
2501. PREPAIDS	189,081	189,081		0
2502. ACCOUNTS RECEIVABLE - OTHER	4,000	4,000		
2503.				
2598. Summary of remaining write-ins for Line 25 from overflow page				
2599. TOTALS (Lines 2501 through 2503 plus 2598) (Line 25 above)	193,081	193,081		0

LIABILITIES, CAPITAL AND SURPLUS

	Current Period			Prior Year
	1 Covered	2 Uncovered	3 Total	4 Total
1. Claims unpaid (less \$.....0 reinsurance ceded)	10,934,463		10,934,463	10,767,051
2. Accrued medical incentive pool and bonus amounts				
3. Unpaid claims adjustment expenses				
4. Aggregate health policy reserves, including the liability of \$.....0 for medical loss ratio rebate per the Public Health Service Act				
5. Aggregate life policy reserves				
6. Property/casualty unearned premium reserve				
7. Aggregate health claim reserves				
8. Premiums received in advance				
9. General expenses due or accrued	10,312,203		10,312,203	10,377,063
10.1 Current federal and foreign income tax payable and interest thereon (including \$.....0 on realized gains (losses))				
10.2 Net deferred tax liability				
11. Ceded reinsurance premiums payable				
12. Amounts withheld or retained for the account of others				
13. Remittances and items not allocated				
14. Borrowed money (including \$.....0 current) and interest thereon \$.....0 (including \$.....0 current)				
15. Amounts due to parent, subsidiaries and affiliates				
16. Derivatives				
17. Payable for securities				
18. Payable for securities lending				
19. Funds held under reinsurance treaties with (\$.....0 authorized reinsurers, \$.....0 unauthorized reinsurers and \$.....0 certified reinsurers)				
20. Reinsurance in unauthorized and certified (\$.....0) companies				
21. Net adjustments in assets and liabilities due to foreign exchange rates				
22. Liability for amounts held under uninsured plans				
23. Aggregate write-ins for other liabilities (including \$.....0 current)				
24. Total liabilities (Lines 1 to 23)	21,246,666		21,246,666	21,144,114
25. Aggregate write-ins for special surplus funds	X X X	X X X		
26. Common capital stock	X X X	X X X	100	100
27. Preferred capital stock	X X X	X X X		
28. Gross paid in and contributed surplus	X X X	X X X	4,690,419	4,690,419
29. Surplus notes	X X X	X X X		
30. Aggregate write-ins for other than special surplus funds	X X X	X X X		
31. Unassigned funds (surplus)	X X X	X X X	(16,679,942)	(15,838,974)
32. Less treasury stock, at cost:				
32.10 shares common (value included in Line 26 \$.....0)	X X X	X X X		
32.20 shares preferred (value included in Line 27 \$.....0)	X X X	X X X		
33. Total capital and surplus (Lines 25 to 31 minus Line 32)	X X X	X X X	(11,989,423)	(11,148,455)
34. Total Liabilities, capital and surplus (Lines 24 and 33)	X X X	X X X	9,257,242	9,995,659
DETAILS OF WRITE-INS				
2301.				
2302.				
2303.				
2398. Summary of remaining write-ins for Line 23 from overflow page				
2399. TOTALS (Lines 2301 through 2303 plus 2398) (Line 23 above)				
2501.	X X X	X X X		
2502.	X X X	X X X		
2503.	X X X	X X X		
2598. Summary of remaining write-ins for Line 25 from overflow page	X X X	X X X		
2599. TOTALS (Lines 2501 through 2503 plus 2598) (Line 25 above)	X X X	X X X		
3001.	X X X	X X X		
3002.	X X X	X X X		
3003.	X X X	X X X		
3098. Summary of remaining write-ins for Line 30 from overflow page	X X X	X X X		
3099. TOTALS (Lines 3001 through 3003 plus 3098) (Line 30 above)	X X X	X X X		

STATEMENT OF REVENUE AND EXPENSES

	Current Year To Date		Prior Year To Date	Prior Year Ended December 31
	1 Uncovered	2 Total	3 Total	4 Total
1. Member Months	X X X		317,039	418,165
2. Net premium income (including \$.....0 non-health premium income)	X X X		89,863,030	117,391,081
3. Change in unearned premium reserves and reserves for rate credits	X X X			
4. Fee-for-service (net of \$.....0 medical expenses)	X X X			
5. Risk revenue	X X X			
6. Aggregate write-ins for other health care related revenues	X X X			
7. Aggregate write-ins for other non-health revenues	X X X			(589,913)
8. Total revenues (Lines 2 to 7)	X X X		89,863,030	116,801,168
Hospital and Medical:				
9. Hospital/medical benefits		29,076	40,252,301	48,564,072
10. Other professional services		13,938	20,167,538	28,719,788
11. Outside referrals				
12. Emergency room and out-of-area		5,221	15,209,943	19,849,134
13. Prescription drugs			9,126,189	11,486,106
14. Aggregate write-ins for other hospital and medical		(388)	598,082	1,041,683
15. Incentive pool, withhold adjustments and bonus amounts				
16. Subtotal (Lines 9 to 15)		47,847	85,354,053	109,660,783
Less:				
17. Net reinsurance recoveries			299,939	993,575
18. Total hospital and medical (Lines 16 minus 17)		47,847	85,054,114	108,667,208
19. Non-health claims (net)				
20. Claims adjustment expenses, including \$.....0 cost containment expenses			3,060,847	3,001,242
21. General administrative expenses		730,898	8,153,188	17,721,345
22. Increase in reserves for life and accident and health contracts (including \$.....0 increase in reserves for life only)				(5,000,000)
23. Total underwriting deductions (Lines 18 through 22)		778,745	96,268,149	124,389,794
24. Net underwriting gain or (loss) (Lines 8 minus 23)	X X X	(778,745)	(6,405,119)	(7,588,627)
25. Net investment income earned		2,500	(87,009)	94,510
26. Net realized capital gains (losses) less capital gains tax of \$.....0				
27. Net investment gains or (losses) (Lines 25 plus 26)		2,500	(87,009)	94,510
28. Net gain or (loss) from agents' or premium balances charged off [(amount recovered \$.....0) (amount charged off \$.....0)]				15,978,610
29. Aggregate write-ins for other income or expenses		394	121	(11,353,245)
30. Net income or (loss) after capital gains tax and before all other federal income taxes (Lines 24 plus 27 plus 28 plus 29)	X X X	(775,851)	(6,492,007)	(2,868,751)
31. Federal and foreign income taxes incurred	X X X			
32. Net income (loss) (Lines 30 minus 31)	X X X	(775,851)	(6,492,007)	(2,868,751)
DETAILS OF WRITE-INS				
0601.	X X X			
0602.	X X X			
0603.	X X X			
0698. Summary of remaining write-ins for Line 6 from overflow page	X X X			
0699. TOTALS (Lines 0601 through 0603 plus 0698) (Line 6 above)	X X X			
0701. Realized Loss on disposal of Fixed Assets	X X X			(589,913)
0702.	X X X			
0703.	X X X			
0798. Summary of remaining write-ins for Line 7 from overflow page	X X X			
0799. TOTALS (Lines 0701 through 0703 plus 0798) (Line 7 above)	X X X			(589,913)
1401. OTHER MEDICAL CLAIMS - DME		(388)	598,082	1,041,683
1402.				
1403.				
1498. Summary of remaining write-ins for Line 14 from overflow page				
1499. TOTALS (Lines 1401 through 1403 plus 1498) (Line 14 above)		(388)	598,082	1,041,683
2901. Write-off balances - Notes Receivable and AR - Other				(70,224)
2902. Write-off of Capital Lease Obligations				131,292
2903. Write-off of Deferred Rent Liability				118,285
2998. Summary of remaining write-ins for Line 29 from overflow page		394	121	(11,532,598)
2999. TOTALS (Lines 2901 through 2903 plus 2998) (Line 29 above)		394	121	(11,353,245)

STATEMENT OF REVENUE AND EXPENSES (Continued)

	1	2	3
	Current Year To Date	Prior Year To Date	Prior Year Ended December 31
CAPITAL & SURPLUS ACCOUNT			
33. Capital and surplus prior reporting year	(11,148,455)	(9,611,106)	(9,611,106)
34. Net income or (loss) from Line 32	(775,851)	(6,492,007)	(2,868,751)
35. Change in valuation basis of aggregate policy and claim reserves			
36. Change in net unrealized capital gains (losses) less capital gains tax of \$.....0			
37. Change in net unrealized foreign exchange capital gain or (loss)			
38. Change in net deferred income tax			
39. Change in nonadmitted assets	(65,118)	(12,102,639)	1,331,402
40. Change in unauthorized and certified reinsurance			
41. Change in treasury stock			
42. Change in surplus notes			
43. Cumulative effect of changes in accounting principles			
44. Capital Changes:			
44.1 Paid in			
44.2 Transferred from surplus (Stock Dividend)			
44.3 Transferred to surplus			
45. Surplus adjustments:			
45.1 Paid in			0
45.2 Transferred to capital (Stock Dividend)			
45.3 Transferred from capital			
46. Dividends to stockholders			
47. Aggregate write-ins for gains or (losses) in surplus			
48. Net change in capital and surplus (Lines 34 to 47)	(840,969)	(18,594,647)	(1,537,349)
49. Capital and surplus end of reporting period (Line 33 plus 48)	(11,989,424)	(28,205,753)	(11,148,455)
DETAILS OF WRITE-INS			
4701.			
4702.			
4703.			
4798. Summary of remaining write-ins for Line 47 from overflow page			
4799. TOTALS (Lines 4701 through 4703 plus 4798) (Line 47 above)			

CASH FLOW

	1 Current Year To Date	2 Prior Year To Date	3 Prior Year Ended December 31
Cash from Operations			
1. Premiums collected net of reinsurance		90,312,510	165,534,554
2. Net investment income	2,500	31,357	231,357
3. Miscellaneous income			(589,913)
4. TOTAL (Lines 1 to 3)	2,500	90,343,867	165,175,999
5. Benefit and loss related payments	(262,603)	82,518,442	140,581,025
6. Net transfers to Separate Accounts, Segregated Accounts and Protected Cell Accounts			
7. Commissions, expenses paid and aggregate write-ins for deductions	795,365	11,860,811	34,245,106
8. Dividends paid to policyholders			
9. Federal and foreign income taxes paid (recovered) net of \$.....0 tax on capital gains (losses)			
10. TOTAL (Lines 5 through 9)	532,762	94,379,252	174,826,131
11. Net cash from operations (Line 4 minus Line 10)	(530,262)	(4,035,385)	(9,650,133)
Cash from Investments			
12. Proceeds from investments sold, matured or repaid:			
12.1 Bonds		897,068	13,979,364
12.2 Stocks			
12.3 Mortgage loans			
12.4 Real estate			
12.5 Other invested assets			
12.6 Net gains or (losses) on cash, cash equivalents and short-term investments			
12.7 Miscellaneous proceeds			
12.8 TOTAL investment proceeds (Lines 12.1 to 12.7)		897,068	13,979,364
13. Cost of investments acquired (long-term only):			
13.1 Bonds		500,000	500,000
13.2 Stocks			
13.3 Mortgage loans			
13.4 Real estate			
13.5 Other invested assets			
13.6 Miscellaneous applications			
13.7 TOTAL investments acquired (Lines 13.1 to 13.6)		500,000	500,000
14. Net increase (or decrease) in contract loans and premium notes			
15. Net cash from investments (Line 12.8 minus Line 13.7 and Line 14)		397,068	13,479,364
Cash from Financing and Miscellaneous Sources			
16. Cash provided (applied):			
16.1 Surplus notes, capital notes			
16.2 Capital and paid in surplus, less treasury stock		0	0
16.3 Borrowed funds			
16.4 Net deposits on deposit-type contracts and other insurance liabilities			
16.5 Dividends to stockholders			
16.6 Other cash provided (applied)	(65,118)	275,898	1,201,769
17. Net cash from financing and miscellaneous sources (Lines 16.1 through 16.4 minus Line 16.5 plus Line 16.6)	(65,118)	275,898	1,201,769
RECONCILIATION OF CASH, CASH EQUIVALENTS AND SHORT-TERM INVESTMENTS			
18. Net change in cash, cash equivalents and short-term investments (Line 11, plus Lines 15 and 17)	(595,380)	(3,362,420)	5,031,000
19. Cash, cash equivalents and short-term investments:			
19.1 Beginning of year	9,852,621	4,821,621	4,821,621
19.2 End of period (Line 18 plus Line 19.1)	9,257,242	1,459,201	9,852,621

Note: Supplemental Disclosures of Cash Flow Information for Non-Cash Transactions:

20.0001	Long-term CDARs were reported as cash in the 12/31/11 annual statement - this was corrected in the 1			
20.0002	Notes Receivable were reported as aggregate write-ins at 12/31/11 - at 3/31/12 a reclassification wa			

EXHIBIT OF PREMIUMS, ENROLLMENT AND UTILIZATION

	1 Total	Comprehensive (Hospital & Medical)		4 Medicare Supplement	5 Vision Only	6 Dental Only	7 Federal Employees Health Benefit Plan	8 Title XVIII Medicare	9 Title XIX Medicaid	10 Other
		2 Individual	3 Group							
Total Members at end of:										
1. Prior Year										
2. First Quarter										
3. Second Quarter										
4. Third Quarter										
5. Current Year										
6. Current Year Member Months										
Total Member Ambulatory Encounters for Period:										
7. Physician										
8. Non-Physician										
9. Total										
10. Hospital Patient Days Incurred										
11. Number of Inpatient Admissions										
12. Health Premiums Written (a)										
13. Life Premiums Direct										
14. Property/Casualty Premiums Written										
15. Health Premiums Earned										
16. Property/Casualty Premiums Earned										
17. Amount Paid for Provision of Health Care Services	(119,565)		(7,646)						(111,919)	
18. Amount Incurred for Provision of Health Care Services	47,847		1,335						46,512	

(a) For health premiums written: amount of Medicare Title XVIII exempt from state taxes or fees \$.....0.

CLAIMS UNPAID AND INCENTIVE POOL, WITHHOLD AND BONUS (Reported and Unreported)

Aging Analysis of Unpaid Claims

1 Account	2 1 - 30 Days	3 31 - 60 Days	4 61 - 90 Days	5 91 - 120 days	6 Over 120 Days	7 Total
0199999 Individually Listed Claims Unpaid						
0399999 Aggregate Accounts Not Individually Listed - Covered					10,934,463	10,934,463
0499999 Subtotals					10,934,463	10,934,463
0799999 Total Claims Unpaid						10,934,463
0899999 Accrued Medical Incentive Pool And Bonus Amounts						

UNDERWRITING AND INVESTMENT EXHIBIT

ANALYSIS OF CLAIMS UNPAID-PRIOR YEAR-NET OF REINSURANCE

	Claims Paid Year to Date		Liability End of Current Quarter		5	6
	1	2	3	4	Claims Incurred in Prior Years (Columns 1+3)	Estimated Claim Reserve and Claim Liability Dec 31 of Prior Year
	On Claims Incurred Prior to January 1 of Current Year	On Claims Incurred During the Year	On Claims Unpaid Dec 31 of Prior Year	On Claims Incurred During the Year		
1. Comprehensive (hospital & medical)	(7,646)		586,605		578,959	577,624
2. Medicare Supplement						
3. Dental only						
4. Vision only						
5. Federal Employees Health Benefits Plan						
6. Title XVIII - Medicare						
7. Title XIX - Medicaid	(111,919)		10,347,858		10,235,939	10,189,427
8. Other health						
9. Health subtotal (Lines 1 to 8)	(119,565)		10,934,463		10,814,898	10,767,051
10. Healthcare receivables (a)						
11. Other non-health						
12. Medical incentive pools and bonus amounts						
13. Totals (Lines 9 - 10 + 11 + 12)	(119,565)		10,934,463		10,814,898	10,767,051

(a) Excludes \$.....0 loans or advances to providers not yet expensed.

Notes to Financial Statement

1. Summary of Significant Accounting Policies

A. Accounting Practices

The financial statements of DC Chartered Health Plan (Chartered) are presented on the basis of accounting practices prescribed or permitted by the District of Columbia Department of Insurance, Securities and Banking (DISB).

The DISB recognizes only statutory accounting practices prescribed or permitted by the District of Columbia (District) for determining and reporting the financial condition and results of operations of an insurance company and for determining its solvency under the District of Columbia Insurance Code. The DISB has adopted the National Association of Insurance Commissioners' (NAIC) *Accounting Practices and Procedures Manual* as a component of prescribed and permitted practices for the District. The DISB has the right to permit specific practices that deviate from prescribed practices. There is no deviation from the NAIC *Accounting Practices and Procedures Manual*.

A reconciliation of the Company's net income and capital and surplus between NAIC SAP and practices prescribed and permitted by the District of Columbia Department of Insurance, Securities and Banking is shown below:

		<u>State of Domicile</u>	2014	2013
<u>NET INCOME</u>				
(1)	State basis (Page 4, Line 32, Columns 2 & 3)	DC	\$(775,851)	\$(2,868,750)
(2)	State Prescribed Practices that increase/(decrease) NAIC SAP:			
(201)				
(299)	Total		\$0	\$0
(3)	State Permitted Practices that increase/(decrease) NAIC SAP:			
(301)				
(399)	Total		\$0	\$0
(4)	NAIC SAP (1-2-3=4)		\$(775,851)	\$(2,868,750)
<u>SURPLUS</u>				
(5)	State basis (Page 3, Line 33, Columns 3 & 4)	DC	\$(11,989,423)	\$(11,148,454)
(6)	State Prescribed Practices that increase/(decrease) NAIC SAP:			
(601)				
(699)	Total		\$0	\$0
(7)	State Permitted Practices that increase/(decrease) NAIC SAP:			
(701)				
(799)	Total		\$0	\$0
(8)	NAIC SAP (5-6-7=8)		\$(11,989,423)	\$(11,148,454)

B. Use of Estimates in the Preparation of the Financial Statements - No Material Change

C. Accounting Policy - No Material Change

2. Accounting Changes and Corrections of Errors

No Material Change

3. Business Combinations and Goodwill

A. Statutory Purchase Method – No Material Change

B. Statutory Merger – No Material Change

C. Assumption Reinsurance – No Material Change

D. Impairment Loss - No Material Change

Notes to Financial Statement

4. Discontinued Operations

No Material Change

5. Investments

A, B, C – No Material Change

D. Debt Restructuring – None

E. Repurchase Agreements and/or Securities Lending Transactions

(1) Policy for requiring collateral or other security – No material change

(2) Carrying amount and classification of both those assets and associated liabilities – No material change

(3) Collateral accepted that it is permitted by contract or custom to sell or repledge:

a. Aggregate amount of contractually obligated open collateral positions – No material change

b. Fair value of that collateral and of the portion of that collateral that it has sold or repledged – None

c. Information about the sources and uses of that collateral – No material change

(4) Aggregate value of the reinvested collateral which is “one-line” reported and the aggregate reinvested collateral which is reported in the investment schedules – No material change

(5) Reinvestment of the cash collateral and any securities which it or its agent receives as collateral that can be sold or repledged – No material change

(6) Collateral accepted that it is not permitted by contract or custom to sell or repledge – No material change

(7) Collateral for transactions that extend beyond one year from the reporting date – No material change

F, G, H – No Material Change

I. Working Capital Finance Investments

(1) Aggregate book/adjusted carrying value maturity distributions on the underlying Working Capital Finance Programs – None

(2) Events of default of working capital finance investments during the reporting period - None

6. Joint Ventures, Partnerships and Limited Liability Companies

No Material Change

7. Investment Income

No Material Change

8. Derivative Instruments

No Material Change

9. Income Taxes

No Material Change

10. Information Concerning Parent, Subsidiaries, Affiliates and Other Related Parties

No Material Change

11. Debt

A. Outstanding Debt – No Material Change

B. FHLB (Federal Home Loan Bank) Agreements – None

12. Retirement Plans, Deferred Compensation, Postemployment Benefits and Compensated Absences and Other Postretirement Benefit Plans.

A. Defined Benefit Plan – No Material Change

Notes to Financial Statement

- (1) Change in benefit obligation – No Material Change
 - (2) Change in plan assets- No Material Change
 - (3) Funded status – No Material Change
 - (4) Amount of Net Periodic Benefit Cost recognized – None
 - (5) Net Gain or Loss and Net Prior Service Cost or credit recognized in unassigned funds (surplus) – No Material Change
 - (6) Amount in unassigned funds (surplus) expected to be recognized as components of net periodic benefit cost over the fiscal year – No Material Change
 - (7) Amount in unassigned funds (surplus) that have not been recognized as components of net periodic benefit cost – No Material Change
 - (8) Weighted-average assumptions used to determine net period benefit cost – No Material Change
 - (9) Amount of accumulated benefit obligations for defined benefit pension plans – No Material Change
 - (10) Assumed Health care cost trend rate for the next year used to measure the expected cost of benefit covered by the plan – No Material Change
 - (11) Effect of one percentage point increase and decrease in the assumed health cast trend rates – No Material Change
 - (12) Estimated future payments, which reflect expected future service, as appropriate, are expected to be paid in the years – No Material Change
 - (13) Regulatory contribution requirements – No Material Change
 - (14) Amounts and types of securities of the employer and related parties included in the plan assets – No Material Change
 - (15) Alternative amortization – No Material Change
 - (16) Substantive commitment – No Material Change
 - (17) Cost of providing special or contractual termination benefits – No Material Change
 - (18) Explanation of any significant change in benefit obligations or plan assets – No Material Change
 - (19) Amount and timing of any plan assets expected to be returned to the employer – No Material Change
 - (20) First year accumulated postretirement and pension benefit obligation – No Material Change
 - (21) Election of transition guidance – No Material Change
- B. Defined Contribution Plan – No Material Change
- C. Multi-Employer Plan – No Material Change
- D. Consolidated/Holding Company Plans – No Material Change
- E. Post-Employment Benefits and Compensated Absences – No Material Change
- F. Impact of Medicare Modernization Act on Postretirement Benefits (INT 04-17) – No Material Change

13. Capital and Surplus, Dividend Restrictions and Quasi-Reorganizations

No Material Change

14. Contingencies

- A. Contingent Commitments – No Material Change
- B. Assessments – No Material Change
- C. Gain Contingencies – No Material Change
- D. Claims Related Extra Contractual Obligation and Bad Faith Losses Stemming from Lawsuits – No Material Change

Notes to Financial Statement

E. All Other Contingencies – No Material Change

15. Leases

A. Lessee Operating Lease – No Material Change

B. Lessor Leases – No Material Change

16. About Financial Instruments With Off-Balance-Sheet Risk And Financial Instruments With Concentrations of Credit Risk

No Material Change

17. Sale, Transfer and Servicing of Financial Assets and Extinguishments of Liabilities

A. Transfers of Receivables reported as Sales – No Material Change

B. Transfer and Servicing of Financial Assets

- (1) Description of loaned securities – No material change
- (2) Servicing Assets and Liabilities
 - a. Risks inherent in servicing assets and servicing liabilities – No Material Change
 - b. Amounts of contractually specified servicing fees, late fees and ancillary fees earned for each period – None
 - c. Assumptions used to estimate the fair value – No Material Change
- (3) Servicing Assets and servicing liabilities are subsequently measured at fair value – No Material Change
- (4) For securitizations, asset-backed financing arrangements, and similar transfers accounted for as sales when the transferor has continuing involvement (as defined in the glossary of the *Accounting Practices & Procedures Manual*) with the transferred financial assets:
 - a. Each income statement presented – None
 - b. Each statement of financial position presented, regardless of when the transfer occurred - None
 - c. Transfers of financial assets accounted for as secured borrowing – No Material Change
 - d. Transfers of receivables with recourse – No Material Change
 - e. Securities underlying repurchase and reverse repurchase agreements – No Material Change

B. Wash Sales – None

18. Gain or Loss to the Reporting Entity from Uninsured Plans and the Uninsured Portion of Partially Insured Plans

A. ASO Plans – No Material Change

B. ASC Plans – No Material Change

C. Medicare or Other Similarly Structured Cost Based Reimbursement Contract – No Material Change

19. Direct Premium Written/Produced by Managing General Agents/Third Party Administrators

No Material Change

20. Fair Value Measurements

A. Fair Market Value at Reporting Date

1. Fair Value Measurements at Reporting Date – None
2. Fair Value Measurements in (Level 3) of the Fair Value Hierarchy – None
3. The Company does not have any securities valued at fair value.
4. The Company has not valued any securities at a Level 3.
5. Derivative assets and liabilities – None

Notes to Financial Statement

B. Fair Value information under SSAP No. 100 combined with Fair Value information Under Other Accounting Pronouncements – None

C. Aggregate Fair Value of All Financial Instruments

Type of Financial Instrument	Aggregate Fair Value	Admitted Assets	(Level 1)	(Level 2)	(Level 3)	Not Practicable (Carrying Value)
Cash Equivalents	\$8,399,764	\$8,399,764	\$0	\$8,399,764	\$0	\$0

D. Not Practicable to Estimate Fair Value – None

21. Other Items

- A. Extraordinary Items – No Material Change
- B. Troubled Debt Restructuring – No Material Change
- C. Other Disclosures and Unusual Items – No Material Change
- D. Business Interruption Insurance Recoveries – No Material Change
- E. State Transferable and Non-transferable Tax Credits – No Material Change
- F. Subprime-Mortgage-Related Risk Exposure – No Material Change
- G. Retained Assets – No Material Change
- H. Offsetting and Netting of Assets and Liabilities – None
- I. Joint and Several Liabilities – No Material Change
- J. Risk Sharing Provisions of the Affordable Care Act – None

22. Events Subsequent

Type I – Recognized Subsequent Events

No Material Change

Type II – Nonrecognized Subsequent Events

No Material Change

23. Reinsurance

No Material Change

24. Retrospectively Rated Contracts & Contracts Subject to Redetermination

No Material Change

25. Changes in Incurred Losses and Loss Adjustment Expenses

Reserves as of December 31, 2013 were \$10,767,051 for unpaid claims. As of March 31, 2014, \$(119,565) has been paid for incurred claims attributable to insured events of prior years. Reserves remaining for prior years are now \$10,934,463 as a result of re-estimation of unpaid claims. Therefore there has been a \$47,847 unfavorable prior year development since December 31, 2013 to March 31, 2014.

26. Intercompany Pooling Arrangements

No Material Change

27. Structured Settlements

No Material Change

28. Health Care Receivables

- A. Pharmaceutical Rebate Receivables – No Material Change
- B. Risk Sharing Receivables – No Material Change

Notes to Financial Statement

29. Participating Policies

No Material Change

30. Premium Deficiency Reserves

No Material Change

31. Anticipated Salvage and Subrogation

No Material Change

GENERAL INTERROGATORIES

PART 1 - COMMON INTERROGATORIES

GENERAL

- 1.1 Did the reporting entity experience any material transactions requiring the filing of Disclosure of Material Transactions with the State of Domicile, as required by the Model Act? Yes[] No[X]
 1.2 If yes, has the report been filed with the domiciliary state? Yes[] No[] N/A[X]
- 2.1 Has any change been made during the year of this statement in the charter, by-laws, articles of incorporation, or deed of settlement of the reporting entity? Yes[] No[X]
 2.2 If yes, date of change: _____
- 3.1 Is the reporting entity a member of an Insurance Holding Company System consisting of two or more affiliated persons, one or more of which is an insurer? Yes[X] No[]
 If yes, complete Schedule Y, Parts 1 and 1A.
- 3.2 Have there been any substantial changes in the organizational chart since the prior quarter end? Yes[] No[X]
 3.3 If the response to 3.2 is yes, provide a brief description of those changes:
- 4.1 Has the reporting entity been a party to a merger or consolidation during the period covered by this statement? Yes[] No[X]
 4.2 If yes, provide the name of entity, NAIC Company Code, and state of domicile (use two letter state abbreviation) for any entity that has ceased to exist as a result of the merger or consolidation.

1 Name of Entity	2 NAIC Company Code	3 State of Domicile

5. If the reporting entity is subject to a management agreement, including third-party administrator(s), managing general agent(s), attorney-in-fact, or similar agreement, have there been any significant changes regarding the terms of the agreement or principals involved? Yes[] No[X] N/A[]
 If yes, attach an explanation.
- 6.1 State as of what date the latest financial examination of the reporting entity was made or is being made. 12/31/2007
 6.2 State the as of date that the latest financial examination report became available from either the state of domicile or the reporting entity. This date should be the date of the examined balance sheet and not the date the report was completed or released. 12/31/2007
 6.3 State as of what date the latest financial examination report became available to other states or the public from either the state of domicile or the reporting entity. This is the release date or completion date of the examination report and not the date of the examination (balance sheet date). 12/31/2008
 6.4 By what department or departments?
 District of Columbia Department of Insurance and Securities Regulation
- 6.5 Have all financial statement adjustments within the latest financial examination report been accounted for in a subsequent financial statement filed with Departments? Yes[X] No[] N/A[]
 6.6 Have all of the recommendations within the latest financial examination report been complied with? Yes[X] No[] N/A[]
- 7.1 Has this reporting entity had any Certificates of Authority, licenses or registrations (including corporate registration, if applicable) suspended or revoked by any governmental entity during the reporting period? Yes[] No[X]
 7.2 If yes, give full information
- 8.1 Is the company a subsidiary of a bank holding company regulated by the Federal Reserve Board? Yes[] No[X]
 8.2 If response to 8.1 is yes, please identify the name of the bank holding company.
 8.3 Is the company affiliated with one or more banks, thrifts or securities firms? Yes[] No[X]
 8.4 If response to 8.3 is yes, please provide below the names and location (city and state of the main office) of any affiliates regulated by a federal regulatory services agency [i.e. the Federal Reserve Board (FRB), the Office of the Comptroller of the Currency (OCC), the Federal Deposit Insurance Corporation (FDIC) and the Securities Exchange Commission (SEC)] and identify the affiliate's primary federal regulator.]

1 Affiliate Name	2 Location (City, State)	3 FRB	4 OCC	5 FDIC	6 SEC
		Yes[] No[X]	Yes[] No[X]	Yes[] No[X]	Yes[] No[X]

- 9.1 Are the senior officers (principal executive officer, principal financial officer, principal accounting officer or controller, or persons performing similar functions) of the reporting entity subject to a code of ethics, which includes the following standards? Yes[X] No[]
 (a) Honest and ethical conduct, including the ethical handling of actual or apparent conflicts of interest between personal and professional relationships;
 (b) Full, fair, accurate, timely and understandable disclosure in the periodic reports required to be filed by the reporting entity;
 (c) Compliance with applicable governmental laws, rules and regulations;
 (d) The prompt internal reporting of violations to an appropriate person or persons identified in the code; and
 (e) Accountability for adherence to the code.
- 9.11 If the response to 9.1 is No, please explain:
 9.2 Has the code of ethics for senior managers been amended? Yes[] No[X]
 9.21 If the response to 9.2 is Yes, provide information related to amendment(s).
 9.3 Have any provisions of the code of ethics been waived for any of the specified officers? Yes[] No[X]
 9.31 If the response to 9.3 is Yes, provide the nature of any waiver(s).

FINANCIAL

- 10.1 Does the reporting entity report any amounts due from parent, subsidiaries or affiliates on Page 2 of this statement? Yes[] No[X]
 10.2 If yes, indicate any amounts receivable from parent included in the Page 2 amount: \$ 0

INVESTMENT

- 11.1 Were any of the stocks, bonds, or other assets of the reporting entity loaned, placed under option agreement, or otherwise made available for use by another person? (Exclude securities under securities lending agreements.) Yes[] No[X]
 11.2 If yes, give full and complete information relating thereto:
12. Amount of real estate and mortgages held in other invested assets in Schedule BA: \$ 0
 13. Amount of real estate and mortgages held in short-term investments: \$ 0

GENERAL INTERROGATORIES (Continued)

INVESTMENT

14.1 Does the reporting entity have any investments in parent, subsidiaries and affiliates?
 14.2 If yes, please complete the following:

Yes No

	1 Prior Year-End Book/Adjusted Carrying Value	2 Current Quarter Book/Adjusted Carrying Value
14.21 Bonds		
14.22 Preferred Stock		
14.23 Common Stock		
14.24 Short-Term Investments		
14.25 Mortgages Loans on Real Estate		
14.26 All Other		
14.27 Total Investment in Parent, Subsidiaries and Affiliates (Subtotal Lines 14.21 to 14.26)		
14.28 Total Investment in Parent included in Lines 14.21 to 14.26 above		

15.1 Has the reporting entity entered into any hedging transactions reported on Schedule DB?
 15.2 If yes, has a comprehensive description of the hedging program been made available to the domiciliary state?
 If no, attach a description with this statement.

Yes No
 Yes No N/A

16. For the reporting entity's security lending program, state the amount of the following as of the current statement date:
 16.1 Total fair value of reinvested collateral assets reported on Schedule DL, Parts 1 and 2
 16.2 Total book/adjusted carrying value of reinvested collateral assets reported on Schedule DL, Parts 1 and 2
 16.3 Total payable for securities lending reported on the liability page

\$ 0
 \$ 0
 \$ 0

17. Excluding items in Schedule E - Part 3 - Special Deposits, real estate, mortgage loans and investments held physically in the reporting entity's offices, vaults or safety deposit boxes, were all stocks, bonds and other securities, owned throughout the current year held pursuant to a custodial agreement with a qualified bank or trust company in accordance with Section 1, III - General Examination Considerations, F. Outsourcing of Critical Functions, Custodial or Safekeeping Agreements of the NAIC Financial Condition Examiners Handbook?
 17.1 For all agreements that comply with the requirements of the NAIC Financial Condition Examiners Handbook, complete the following:

Yes No

1 Name of Custodian(s)	2 Custodian Address
CARDINAL BANK	8270 GREENSBORO DR. STE 500, MCLEAN, VA 22102

17.2 For all agreements that do not comply with the requirements of the NAIC Financial Condition Examiners Handbook, provide the name, location and a complete explanation:

1 Name(s)	2 Location(s)	3 Complete Explanation(s)

17.3 Have there been any changes, including name changes, in the custodian(s) identified in 17.1 during the current quarter?
 17.4 If yes, give full and complete information relating thereto:

Yes No

1 Old Custodian	2 New Custodian	3 Date of Change	4 Reason

17.5 Identify all investment advisors, brokers/dealers or individuals acting on behalf of broker/dealers that have access to the investment accounts, handle securities and have authority to make investments on behalf of the reporting entity:

1 Central Registration Depository	2 Name(s)	3 Address

18.1 Have all the filing requirements of the Purposes and Procedures Manual of the NAIC Securities Valuation Office been followed?
 18.2 If no, list exceptions:

Yes No

GENERAL INTERROGATORIES

PART 2 - HEALTH

- | | |
|--|--------------|
| 1. Operating Percentages: | |
| 1.1 A&H loss percent | 0.000% |
| 1.2 A&H cost containment percent | 0.000% |
| 1.3 A&H expense percent excluding cost containment expenses | 0.000% |
| 2.1 Do you act as a custodian for health savings accounts? | Yes[] No[X] |
| 2.2 If yes, please provide the amount of custodial funds held as of the reporting date. | \$..... 0 |
| 2.3 Do you act as an administrator for health savings accounts? | Yes[] No[X] |
| 2.4 If yes, please provide the balance of the funds administered as of the reporting date. | \$..... 0 |

SCHEDULE S - CEDED REINSURANCE
Showing All New Reinsurance Treaties - Current Year to Date

1 NAIC Company Code	2 ID Number	3 Effective Date	4 Name of Reinsurer	5 Domiciliary Jurisdiction	6 Type of Reinsurance Ceded	7 Type of Reinsurer	8 Certified Reinsurer Rating (1 through 6)	9 Effective Date of Certified Reinsurer Rating
NONE								

SCHEDULE T - PREMIUMS AND OTHER CONSIDERATIONS

Current Year to Date - Allocated by States and Territories

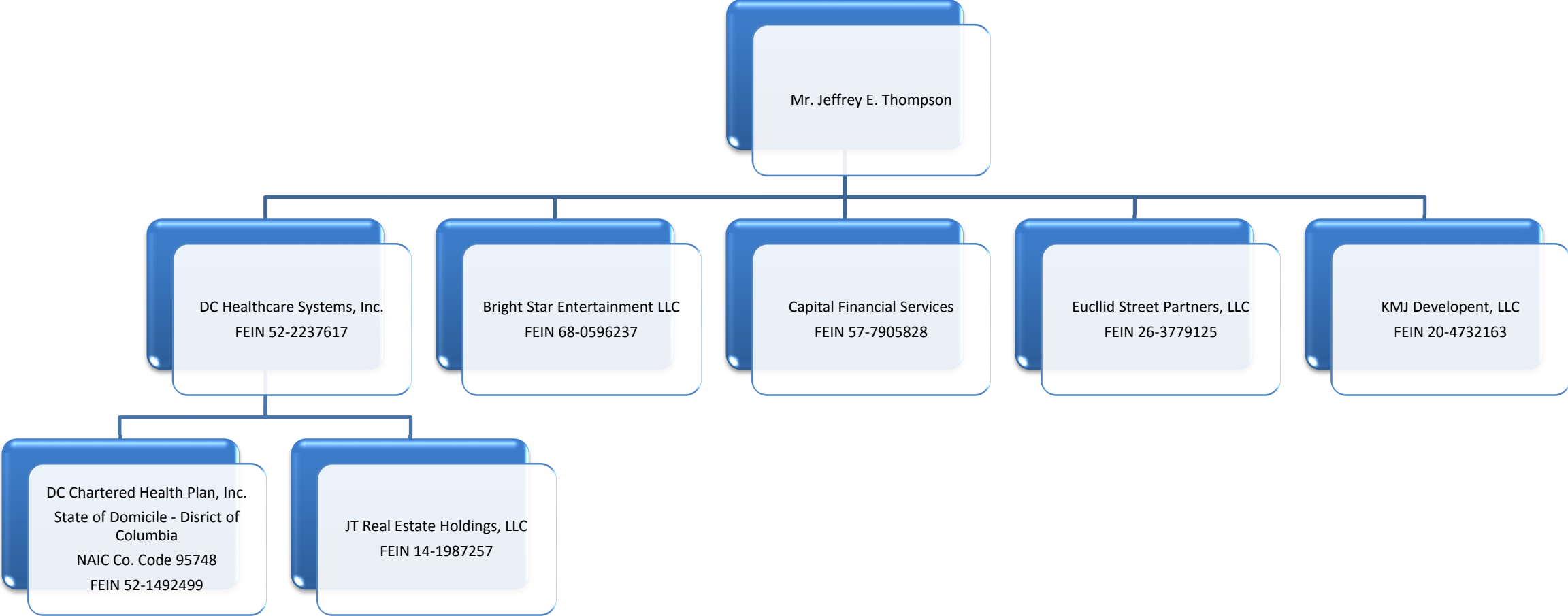
1.	State, Etc.	1 Active Status	Direct Business Only							
			2 Accident and Health Premiums	3 Medicare Title XVIII	4 Medicaid Title XIX	5 Federal Employees Health Benefits Program Premiums	6 Life and Annuity Premiums and Other Considerations	7 Property/Casualty Premiums	8 Total Columns 2 Through 7	9 Deposit-Type Contracts
2.	Alabama (AL)	N								
3.	Alaska (AK)	N								
4.	Arizona (AZ)	N								
5.	Arkansas (AR)	N								
6.	California (CA)	N								
7.	Colorado (CO)	N								
8.	Connecticut (CT)	N								
9.	Delaware (DE)	N								
10.	District of Columbia (DC)	L								
11.	Florida (FL)	N								
12.	Georgia (GA)	N								
13.	Hawaii (HI)	N								
14.	Idaho (ID)	N								
15.	Illinois (IL)	N								
16.	Indiana (IN)	N								
17.	Iowa (IA)	N								
18.	Kansas (KS)	N								
19.	Kentucky (KY)	N								
20.	Louisiana (LA)	N								
21.	Maine (ME)	N								
22.	Maryland (MD)	N								
23.	Massachusetts (MA)	N								
24.	Michigan (MI)	N								
25.	Minnesota (MN)	N								
26.	Mississippi (MS)	N								
27.	Missouri (MO)	N								
28.	Montana (MT)	N								
29.	Nebraska (NE)	N								
30.	Nevada (NV)	N								
31.	New Hampshire (NH)	N								
32.	New Jersey (NJ)	N								
33.	New Mexico (NM)	N								
34.	New York (NY)	N								
35.	North Carolina (NC)	N								
36.	North Dakota (ND)	N								
37.	Ohio (OH)	N								
38.	Oklahoma (OK)	N								
39.	Oregon (OR)	N								
40.	Pennsylvania (PA)	N								
41.	Rhode Island (RI)	N								
42.	South Carolina (SC)	N								
43.	South Dakota (SD)	N								
44.	Tennessee (TN)	N								
45.	Texas (TX)	N								
46.	Utah (UT)	N								
47.	Vermont (VT)	N								
48.	Virginia (VA)	N								
49.	Washington (WA)	N								
50.	West Virginia (WV)	N								
51.	Wisconsin (WI)	N								
52.	Wyoming (WY)	N								
53.	American Samoa (AS)	N								
54.	Guam (GU)	N								
55.	Puerto Rico (PR)	N								
56.	U.S. Virgin Islands (VI)	N								
57.	Northern Mariana Islands (MP)	N								
58.	Canada (CAN)	N								
59.	Aggregate other alien (OT)	XXX								
60.	Subtotal	XXX								
61.	Reporting entity contributions for Employee Benefit Plans	XXX								
61.	Total (Direct Business)	(a) 1								
DETAILS OF WRITE-INS										
5801.		XXX								
5802.		XXX								
5803.		XXX								
5898.	Summary of remaining write-ins for Line 58 from overflow page	XXX								
5899.	TOTALS (Lines 5801 through 5803 plus 5898) (Line 58 above)	XXX								

(L) Licensed or Chartered - Licensed Insurance Carrier or Domiciled RRG; (R) Registered - Non-domiciled RRGs; (Q) Qualified - Qualified or Accredited Reinsurer; (E) Eligible - Reporting Entities eligible or approved to write Surplus Lines in the state; (N) None of the above - Not allowed to write business in the state.

(a) Insert the number of L responses except for Canada and Other Alien.

SCHEDULE Y - INFORMATION CONCERNING ACTIVITIES OF INSURER
MEMBERS OF A HOLDING COMPANY GROUP
PART 1 - ORGANIZATIONAL CHART

Q15



SCHEDULE Y

PART 1A - DETAIL OF INSURANCE HOLDING COMPANY SYSTEM

1 Group Code	2 Group Name	3 NAIC Company Code	4 Federal ID Number	5 FEDERAL RSSD	6 CIK	7 Name of Securities Exchange if Publicly Traded (U.S. or International)	8 Names of Parent, Subsidiaries Or Affiliates	9 Domiciliary Location	10 Relation-ship to Reporting Entity	11 Directly Controlled by (Name of Entity / Person)	12 Type of Control (Ownership, Board, Management, Attorney-in-Fact, Influence, Other)	13 If Control is Ownership Provide Percentage	14 Ultimate Controlling Entity(ies) / Person(s)	15 *
0		0					JEFFREY EARL THOMPSON	DC	UIP	JEFFREY EARL THOMPSON	Ownership	100.0	JEFFREY EARL THOMPSON	
0		95748	52-1492499				DC CHARTERED HEALTH PLAN INC	DC	RE	DC HEALTHCARE SYSTEMS	Ownership	100.0	JEFFREY EARL THOMPSON	
0		0	14-1987257				JT Real Estate Holdings, LLC	DC	NIA	DC HEALTHCARE SYSTEMS	Ownership	100.0	JEFFREY EARL THOMPSON	
0		0	52-2237617				DC HEALTHCARE SYSTEMS	DC	UDP	JEFFREY EARL THOMPSON	Ownership	100.0	JEFFREY EARL THOMPSON	
0		0	52-1563500				THOMPSON, COBB, BAZILIO & ASSOCIATES, PC	DC	NIA	JEFFREY EARL THOMPSON	Ownership	100.0	JEFFREY EARL THOMPSON	
0		0	68-0596237				Bright Star Entertainment LLC	DC	NIA	JEFFREY EARL THOMPSON	Ownership	100.0	JEFFREY EARL THOMPSON	
0		0	57-7905828				Capital Financial Services	DC	NIA	JEFFREY EARL THOMPSON	Ownership	100.0	JEFFREY EARL THOMPSON	
0		0	26-3779125				EUCLID STREET PARTNERS, LLC	DC	NIA	JEFFREY EARL THOMPSON	Ownership	100.0	JEFFREY EARL THOMPSON	
0		0	20-4732163				KMJ Development, LLC	DC	NIA	JEFFREY EARL THOMPSON	Ownership	100.0	JEFFREY EARL THOMPSON	

916

Asterisk	Explanation
0000001	Footnote

SUPPLEMENTAL EXHIBITS AND SCHEDULES INTERROGATORIES

The following supplemental reports are required to be filed as part of your statement filing. However, in the event that your company does not transact the type of business for which the special report must be filed, your response of NO to the specific interrogatory will be accepted in lieu of filing a "NONE" report and a bar code will be printed below. If the supplement is required of your company but is not being filed for whatever reason enter SEE EXPLANATION and provide an explanation following the interrogatory questions.

RESPONSE

1. Will the Medicare Part D Coverage Supplement be filed with the state of domicile and the NAIC with this statement?

No

Explanations:

Bar Codes:

Medicare Part D Coverage Supplement



95748201436500001

2014

Document Code: 365

OVERFLOW PAGE FOR WRITE-INS**STATEMENT OF REVENUE AND EXPENSES**

	Current Year To Date		Prior Year To Date	Prior Year Ended December 31
	1	2	3	4
	Uncovered	Total	Total	Total
2904. Write-off of Pledged Cardinal Bank Assets				(12,175,288)
2905. Write-off Escheat				642,690
2906. Other Miscellaneous Income		394	121	
2997. Summary of remaining write-ins for Line 29 (Lines 2904 through 2996)		394	121	(11,532,598)

SI01 Schedule A Verification NONE

SI01 Schedule B Verification NONE

SI01 Schedule BA Verification NONE

SI01 Schedule D Verification NONE

SI02 Schedule D Part 1B NONE

SI03 Schedule DA Part 1 NONE

SI03 Schedule DA Verification NONE

SI04 Schedule DB - Part A Verification NONE

SI04 Schedule DB - Part B Verification NONE

SI05 Schedule DB Part C Section 1 NONE

SI06 Schedule DB Part C Section 2 NONE

SI07 Schedule DB - Verification NONE

SCHEDULE E - Verification

(Cash Equivalents)

		1	2
		Year To Date	Prior Year Ended December 31
1.	Book/adjusted carrying value, December 31 of prior year	6,142,654	10,225,639
2.	Cost of cash equivalents acquired	418,903,569	2,157,015,255
3.	Accrual of discount		
4.	Unrealized valuation increase (decrease)		
5.	Total gain (loss) on disposals		
6.	Deduct consideration received on disposals	416,646,459	2,161,098,240
7.	Deduct amortization of premium		
8.	Total foreign exchange change in book/adjusted carrying value		
9.	Deduct current year's other than temporary impairment recognized		
10.	Book/adjusted carrying value at end of current period (Lines 1 + 2 + 3 + 4 + 5 - 6 - 7 + 8 - 9)	8,399,764	6,142,654
11.	Deduct total nonadmitted amounts		
12.	Statement value at end of current period (Line 10 minus Line 11)	8,399,764	6,142,654

E01	Schedule A Part 2	NONE
E01	Schedule A Part 3	NONE
E02	Schedule B Part 2	NONE
E02	Schedule B Part 3	NONE
E03	Schedule BA Part 2	NONE
E03	Schedule BA Part 3	NONE
E04	Schedule D Part 3	NONE
E05	Schedule D Part 4	NONE
E06	Schedule DB Part A Section 1	NONE
E07	Schedule DB Part B Section 1	NONE
E08	Schedule DB Part D Section 1	NONE
E09	Schedule DB Part D Section 2 - Collateral Pledged By Reporting Entity	NONE
E09	Schedule DB Part D Section 2 - Collateral Pledged To Reporting Entity	NONE
E10	Schedule DL - Part 1 - Securities Lending Collateral Assets	NONE
E11	Schedule DL - Part 2 - Securities Lending Collateral Assets	NONE

SCHEDULE E - PART 1 - CASH**Month End Depository Balances**

1 Depository		2 Code	3 Rate of Interest	4 Amount of Interest Received During Current Quarter	5 Amount of Interest Accrued at Current Statement Date	Book Balance at End of Each Month During Current Quarter			9 *
						6 First Month	7 Second Month	8 Third Month	
open depositories									
CARDINAL BANK - GENERAL CHECKING	WASHINGTON DC					2,309,396	2,152,785	652,785	X X X
CARDINAL BANK - MEDCLMS	WASHINGTON DC					109,029	133,515	138,607	X X X
CARDINAL BANK - ALLIANCE CLAIMS	WASHINGTON DC					66,086	66,086	66,086	X X X
CARDINAL BANK - MH CLAIMS	WASHINGTON DC					339,578	339,578		X X X
BANK OF AMERICA - PAYROLL	WASHINGTON DC					286,369			X X X
0199998 Deposits in0 depositories that do not exceed the allowable limit in any one depository (see Instructions) - open depositories		X X X	X X X						X X X
0199999 Totals - Open Depositories		X X X	X X X			3,110,458	2,691,965	857,478	X X X
0299998 Deposits in0 depositories that do not exceed the allowable limit in any one depository (see Instructions) - suspended depositories		X X X	X X X						X X X
0299999 Totals - Suspended Depositories		X X X	X X X						X X X
0399999 Total Cash On Deposit		X X X	X X X			3,110,458	2,691,965	857,478	X X X
0499999 Cash in Company's Office		X X X	X X X	X X X	X X X				X X X
0599999 Total Cash		X X X	X X X			3,110,458	2,691,965	857,478	X X X

SCHEDULE E - PART 2 - CASH EQUIVALENTS

Show Investments Owned End of Current Quarter

1 Description	2 Code	3 Date Acquired	4 Rate of Interest	5 Maturity Date	6 Book/Adjusted Carrying Value	7 Amount of Interest Due & Accrued	8 Amount Received During Year
8399999 Subtotals - Bonds							
Sweep Accounts							
CASH-CARDINAL BANK MEDICAID REPO		03/31/2014 ...	0.002	04/01/2014 ...	8,399,764		2,525
8499999 Sweep Accounts					8,399,764		2,525
8599999 Other Cash Equivalents							
8699999 Total - Cash Equivalents					8,399,764		2,525

INDEX TO HEALTH QUARTERLY STATEMENT

Accounting Changes and Corrections of Errors; Q10, Note 2; Q11
Accounting Practices and Policies; Q5; Q10, Note 1
Admitted Assets; Q2
Bonds; Q2; Q6; Q11.1; Q11.2; QE04; QE05
Bonuses; Q3; Q4; Q8; Q9
Borrowed Funds; Q3; Q6
Business Combinations and Goodwill; Q10, Note 3
Capital Gains (Losses)
 Realized; Q4
 Unrealized; Q4; Q5
Capital Stock; Q3; Q10, Note 13
Capital Notes; Q6; Q10, Note 11
Caps; QE06; QSI04
Cash; Q2; Q6; QE12
Cash Equivalents; Q2; Q6; QE13
Claims; Q3; Q4; Q8; Q9
Collars; QE06; QSI04
Commissions; Q6
Common Stock; Q2; Q3; Q6; Q11.1; Q11.2
Cost Containment Expenses; Q4
Contingencies; Q10, Note 14
Counterparty Exposure; Q10, Note 8; QE06; QE08
Debt; Q10, Note 11
Deferred Compensation; Q10, Note 12
Derivative Instruments; Q10, Note 8; QSI04; QSI05; QSI06; QSI07; QE06; QE07; QE08
Discontinued Operations; Q10, Note 4
Electronic Data Processing Equipment; Q2
Encumbrances; Q2; QSI01; QE01
Emergency Room; Q4
Expenses; Q3; Q4; Q6
Extinguishment of Liabilities; Q10, Note 17
Extraordinary Item; Q10, Note 21
Fair Value; Q7, Note 20
Fee for Service; Q4
Foreign Exchange; Q2; Q3; Q5; QSI01; QSI03; QE01; QE02; QE03; QE05
Forwards; QE06; QSI04
Furniture, Equipment and Supplies; Q2
Guaranty Fund; Q2
Health Care Receivables; Q2; Q9; Q10, Note 28
Holding Company; Q16
Hospital/Medical Benefits; Q4
Incentive Pools; Q3; Q4; Q8; Q9
Income; Q4; Q5; Q6
Income Taxes; Q2; Q3; Q4; Q5; Q10, Note 9
Incurred Claims and Claim Adjustment Expenses; Q10, Note 25
Intercompany Pooling; Q10, Note 26
Investment Income; Q10, Note 7
 Accrued; Q2
 Earned; Q2; QSI03
 Received; Q6
Investments; Q10, Note 5; Q11.1; Q11.2; QE08
Joint Venture; Q10, Note 6
Leases; Q10, Note 15
Limited Liability Company (LLC); Q10, Note 6
Limited Partnership; Q10, Note 6
Long-Term Invested Assets; Q2; QE03
Managing General Agents; Q10, Note 19
Medicare Part D Coverage; QSupp1
Member Months; Q4; Q7
Mortgage Loans; Q2; Q6; Q11.1; QSI01; QE02
Nonadmitted Assets; Q2; Q5; QSI01; QSI03
Off-Balance Sheet Risk; Q10, Note 16
Options; QE06; QSI04
Organizational Chart; Q11; Q14
Out-of-Area; Q4
Outside Referrals; Q4
Parent, Subsidiaries and Affiliates; Q2; Q3; Q10, Note 10; Q11.1
Participating Policies; Q10, Note 29
Pharmaceutical Rebates; Q10, Note 28
Policyholder Dividends; Q5; Q6
Postemployment Benefits; Q10, Note 12
Postretirement Benefits; Q10, Note 12
Preferred Stock; Q2; Q3; Q6; Q11.1; Q11.2

INDEX TO HEALTH QUARTERLY STATEMENT

Premium Deficiency Reserves; Q10, Note 30
Premiums and Considerations
 Advance; Q3
 Collected; Q6
 Deferred; Q2
 Direct; Q7; Q13
 Earned; Q7
 Retrospective; Q2
 Uncollected; Q2
 Unearned; Q4
 Written; Q4; Q7
Prescription Drugs; Q4
Quasi Reorganizations; Q10, Note 13
Real Estate; Q2; Q6; QE01; QSI01
Redetermination, Contracts Subject to; Q10, Note 24
Reinsurance; Q9; Q10, Note 23
 Ceded; Q3; Q12
 Funds Held; Q2
 Payable; Q3
 Premiums; Q3
 Receivable; Q2; Q4
 Unauthorized; Q3; Q5
Reserves
 Accident and Health; Q3; Q4
 Claim; Q3; Q5; Q8
 Life; Q3
Retirement Plans; Q10, Note 12
Retrospectively Rated Policies; Q10, Note 24
Risk Revenue; Q4
Salvage and Subrogation; Q10, Note 31
Securities Lending; Q2; Q3; QE09; QE11
Servicing of Financial Assets; Q10, Note 17
Short-Term Investments; Q2; Q6; Q11.1; QSI03
Stockholder Dividends; Q5; Q6
Subsequent Events; Q10, Note 22
Surplus; Q3; Q5; Q6
Surplus Notes; Q3; Q5; Q6
Swaps; QE07; QSI04
Synthetic Assets; QSI04; QSI05
Third Party Administrator; Q10, Note 19
Treasury Stock; Q3; Q5
Uninsured Accident and Health; Q2; Q3; Q10, Note 18
Valuation Allowance; QSI01
Wash Sales; Q10, Note 17
Withholds; Q4; Q8